
THE CHESAPEAKE



MODERN B3



CANADIANA B1



FARMHOUSE B2

BLACKSTONE

2,110 SQ FT
3 BED + BONUS ROOM / 4 BEDROOM OPTION
2.5 BATH

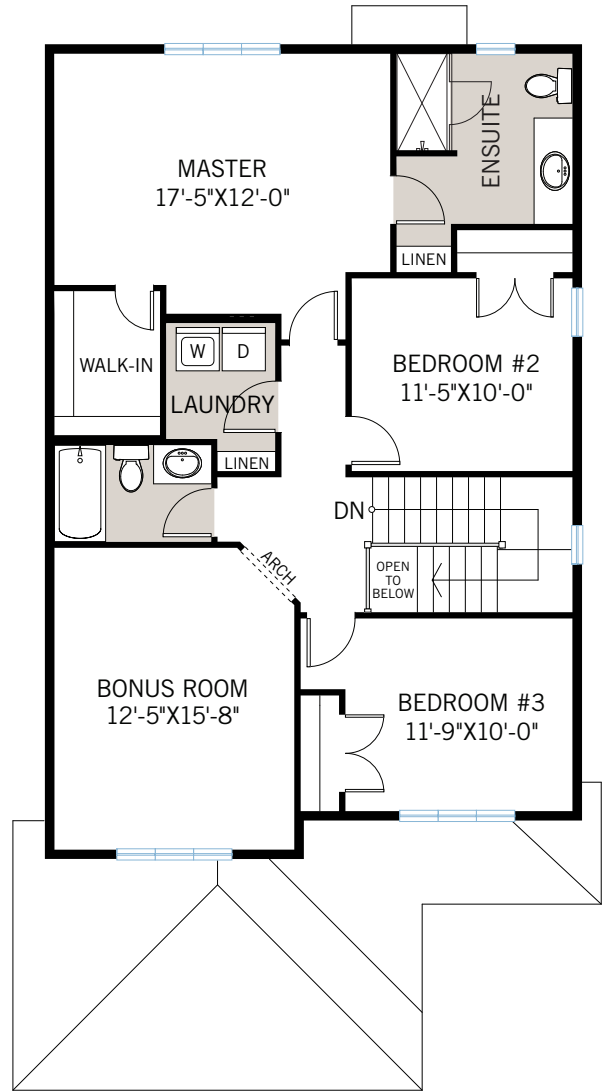
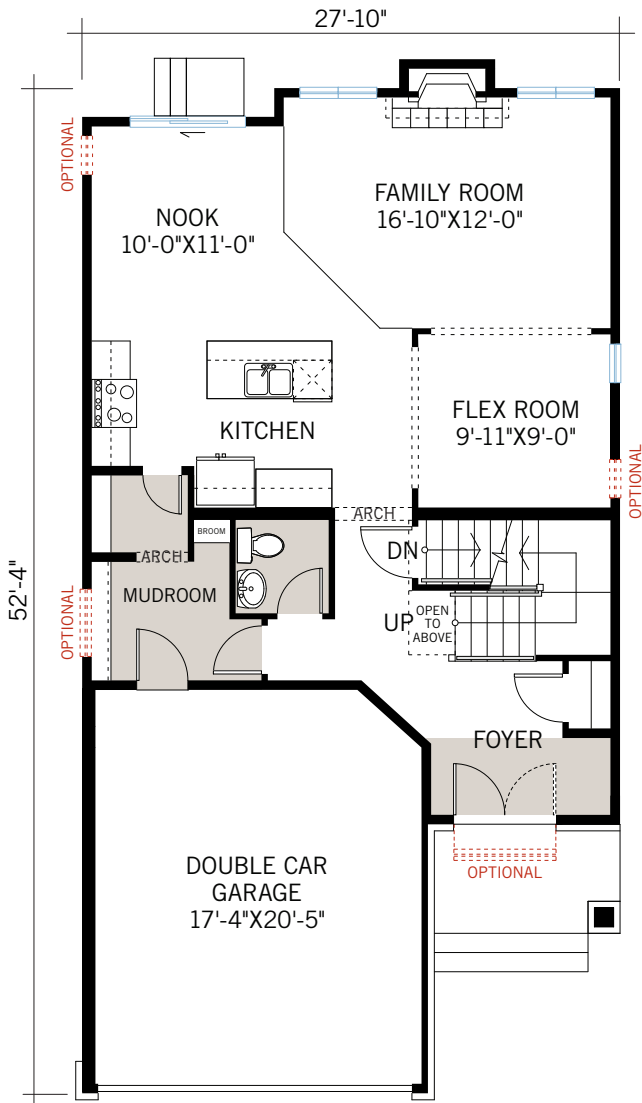
CARDEL
HOMES

MAIN FLOOR

957 SQ FT

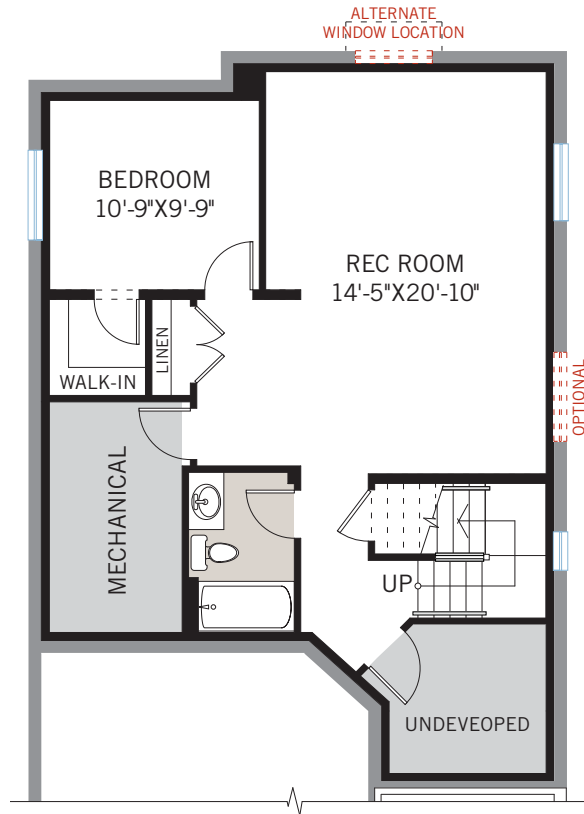
UPPER FLOOR

1,153 SQ FT



OPTION #10
9'-0" Upper Floor Ceiling

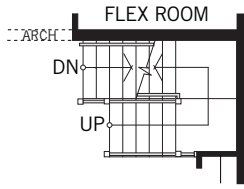
OPTIONAL DEVELOPED BASEMENT



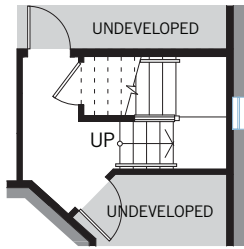
OPTION #15
Developed Basement
- adds 680 sq ft

OPTION #18
9'-0" Basement Ceiling

FLOORPLAN OPTIONS



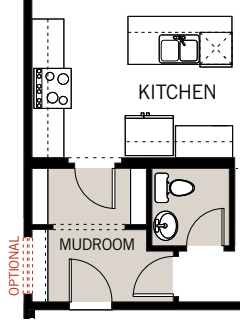
MAIN



FOUNDATION

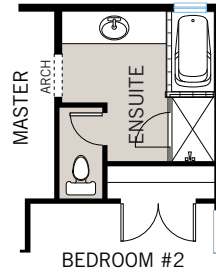
OPTION #1

Developed Basement Stairs
 - adds 51 sq ft to basement
 - adds 24"X24" window in stairwell



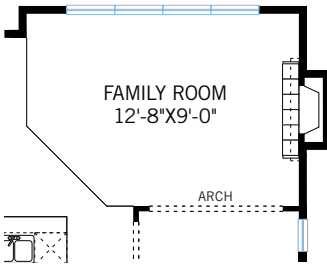
OPTION #2

Alternate Kitchen/Pantry



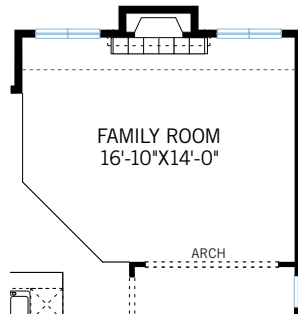
OPTION #3

Alternate Ensuite



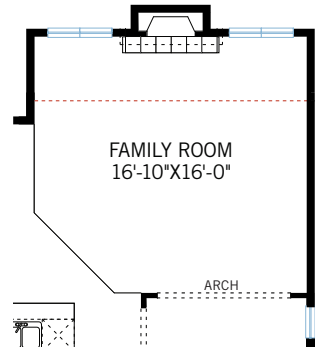
OPTION #6

Family Room Side Fireplace



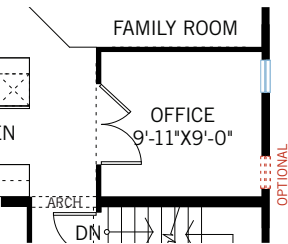
OPTION #7A

2' Family Room Extension
 - adds 36 sq ft to main



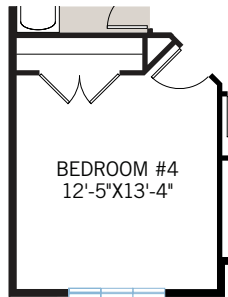
OPTION #7B

4' Family Room Extension
 - adds 72 sq ft to main



OPTION #8

Office
 - adds two 30" French doors



OPTION #16

Additional Bedroom