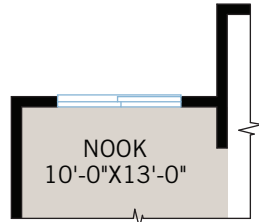


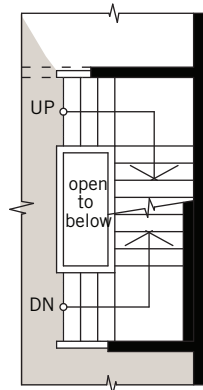
# OPTIONS



**OPTION #02A**  
Alternate Nook  
- adds 20 sq ft

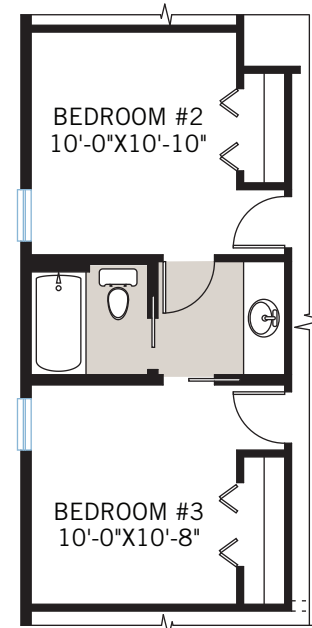


**OPTION #13A**  
Enlarged Bonus Room  
- adds 38 sq ft

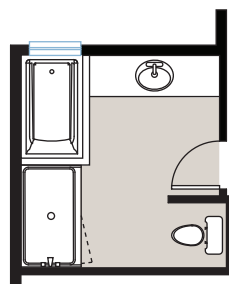


MAIN FLOOR

**OPTION #05A**  
Developed Basement Stairs  
- adds 67 sq ft



**OPTION #15A**  
Jack and Jill Bathroom  
- no additional sq ft

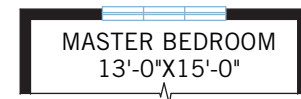


**OPTION #11A**  
Alternate Master Bathroom  
- adds 20 sq ft



MAIN FLOOR

**OPTION #19A**  
Extended Great Room and Master Bedroom  
- adds 56 sq ft (28 main, 28 upper)



UPPER FLOOR



CRAFTSMAN COTTAGE B2



CRAFTSMAN B1



CRAFTSMAN B3



**ESSENCE**  
2,013 SQ FT

**CARDEL**  
HOMES

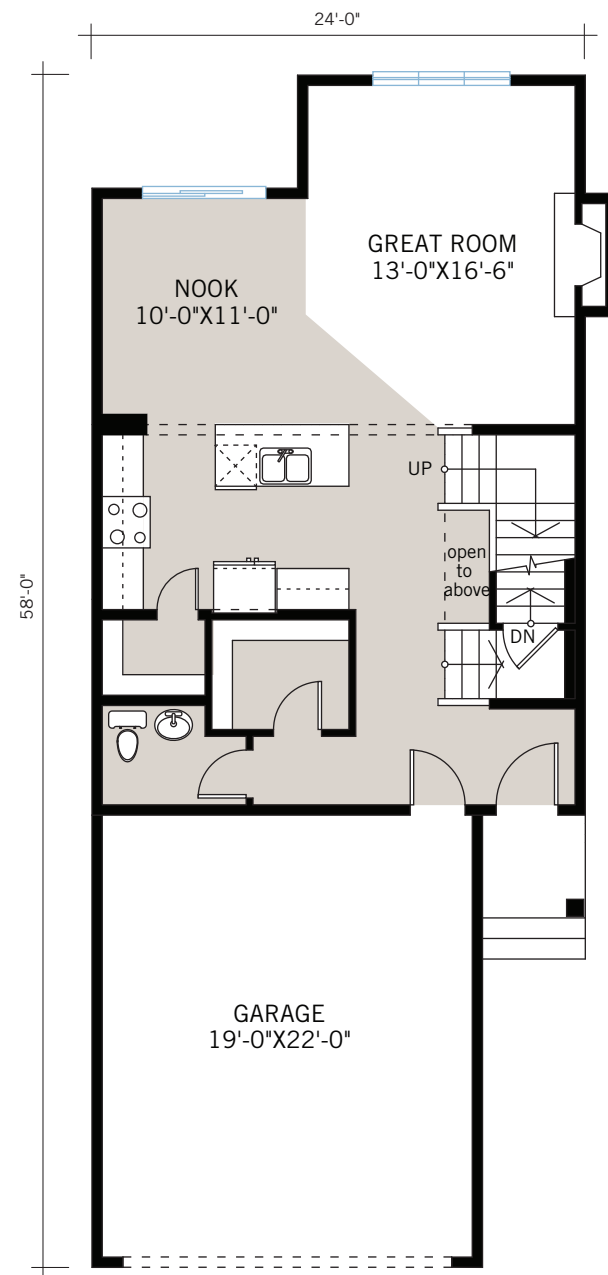


**ESSENCE**  
2,013 SQ FT

**CARDEL**  
HOMES

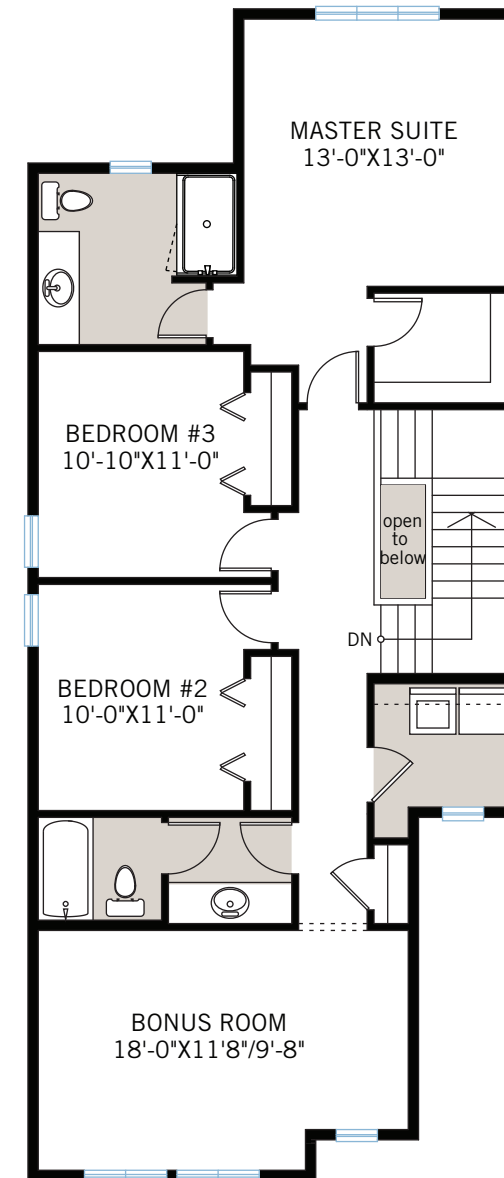
# FLOORPLAN

MAIN FLOOR | 809 SQ FT



# FLOORPLAN

UPPER FLOOR | 1,183 SQ FT



ESSENCE | 2,013 SQ FT

June 2013 | Actual plan may vary from brochure. Square footage is calculated using local Home Builder Association guidelines. This plan is published by Cardel Homes. Dimensions and square footage shown are approximate and subject to change without notice. All rights reserved including the rights of reproduction in whole or part without permission of Publisher E.&O.E. Note: Elevation details are community-specific. Please ask your sales representative for further information.

