

---

# THE BRISCOE

---



MODERN URBAN A3



TRADITIONAL A2



CANADIANA A1

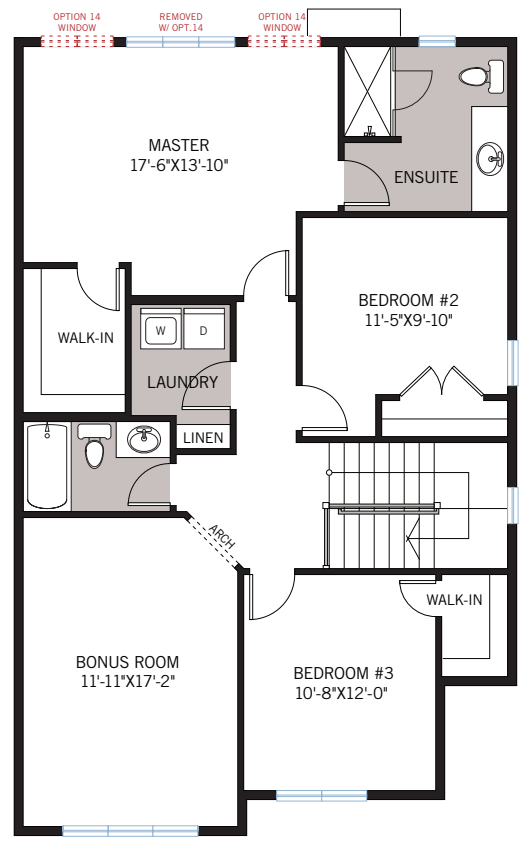
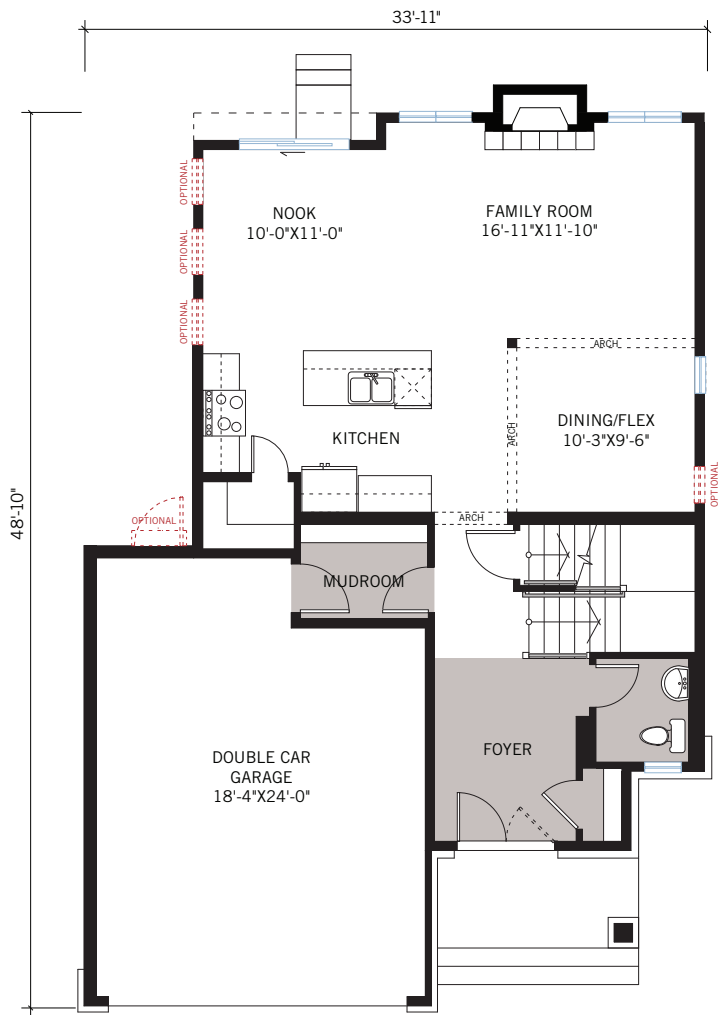
MILLER'S  
CROSSING

2,134 SQ FT

3 BED + BONUS ROOM / 4TH BEDROOM OPTION

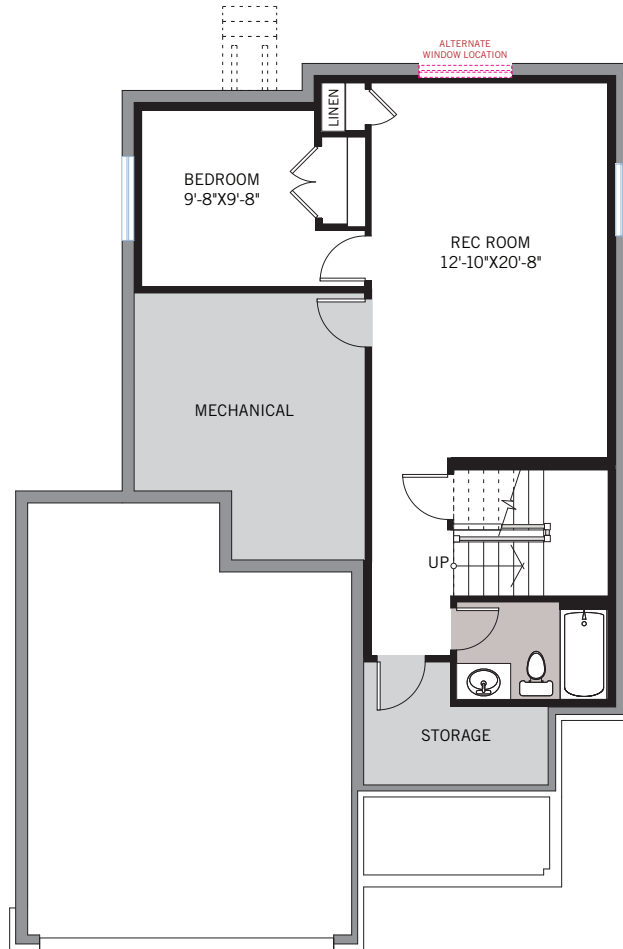
2.5 BATH

CARDEL  
HOMES



OPTION #10  
9' Upper Floor Ceiling

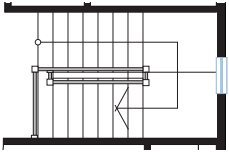
OPTIONAL DEVELOPED BASEMENT



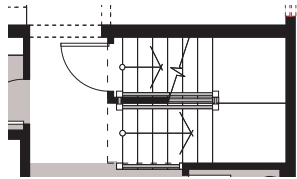
**OPTION #15**  
Developed Basement  
- adds 602 sq ft

**OPTION #18**  
9' Basement Ceiling

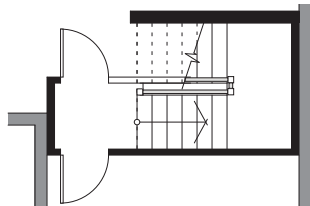
# FLOORPLAN OPTIONS



UPPER

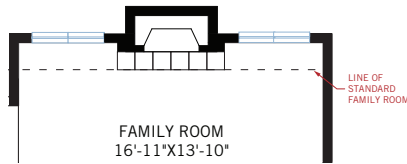


MAIN

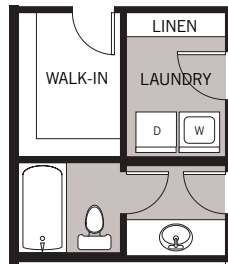


FOUNDATION

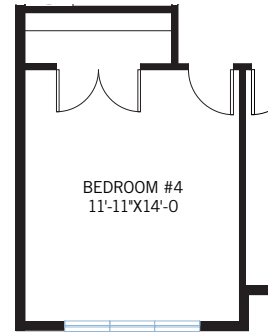
**OPTION #1**  
Developed Basement Stairs  
- adds 22 sq ft



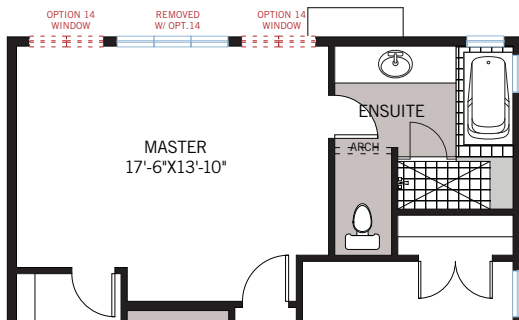
**OPTION #7**  
Extended Family Room  
- adds 37 sq ft main floor



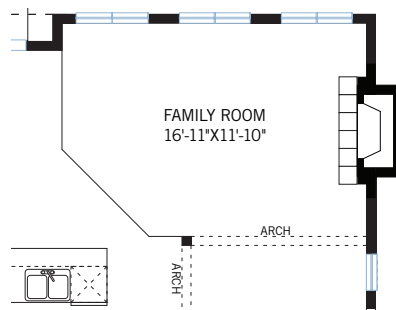
**OPTION #8**  
Alternate Main Bath and  
Extended Laundry Room  
- cannot be combined  
with Option #16



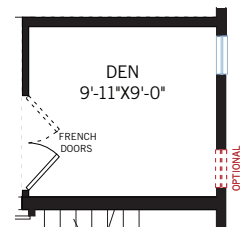
**OPTION #16**  
4th Bedroom  
- cannot be combined  
with Option #8



**OPTION #3**  
Alternate Master Bathroom



**OPTION #6**  
Side Family Room Fireplace



**OPTION #17**  
Optional Den