
THE NICHOLS



URBAN MODERN - A3



CANADIANA - A1

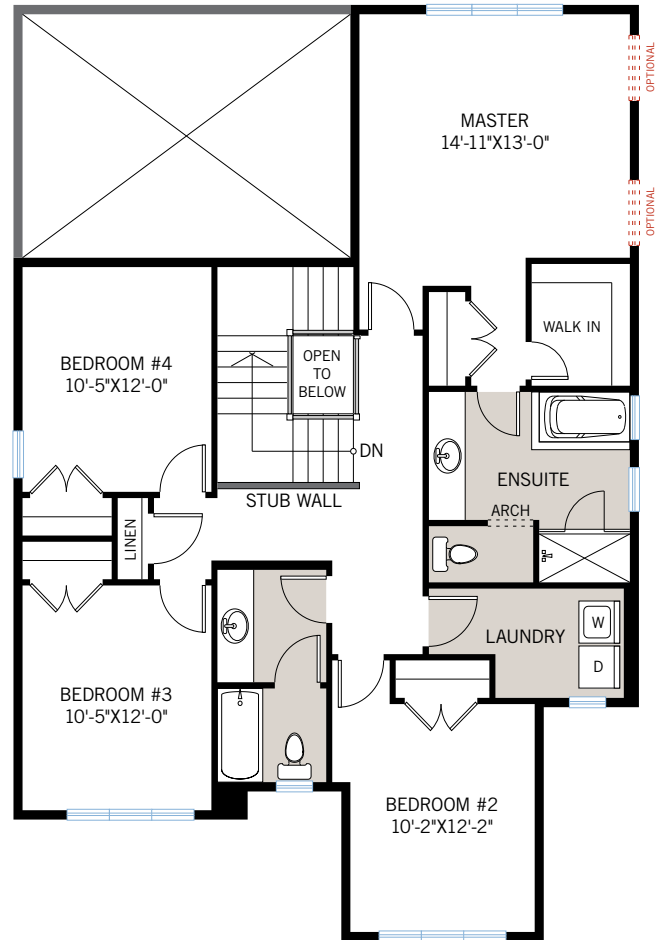
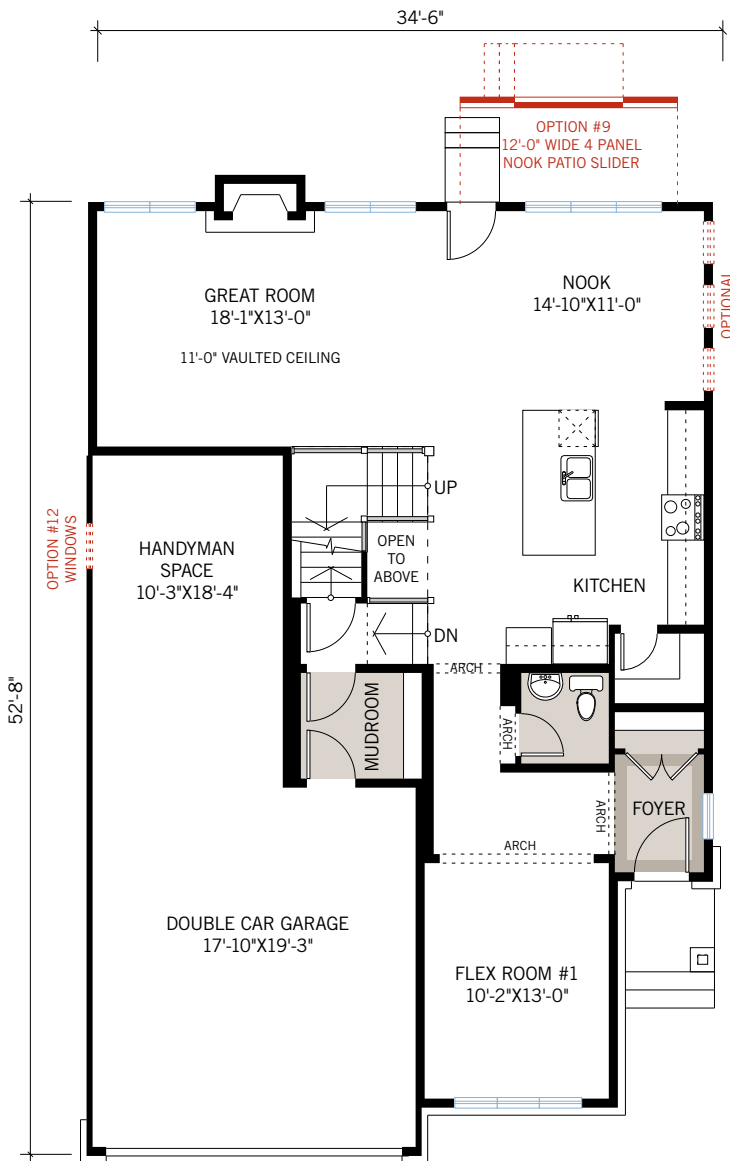


TRADITIONAL - A2

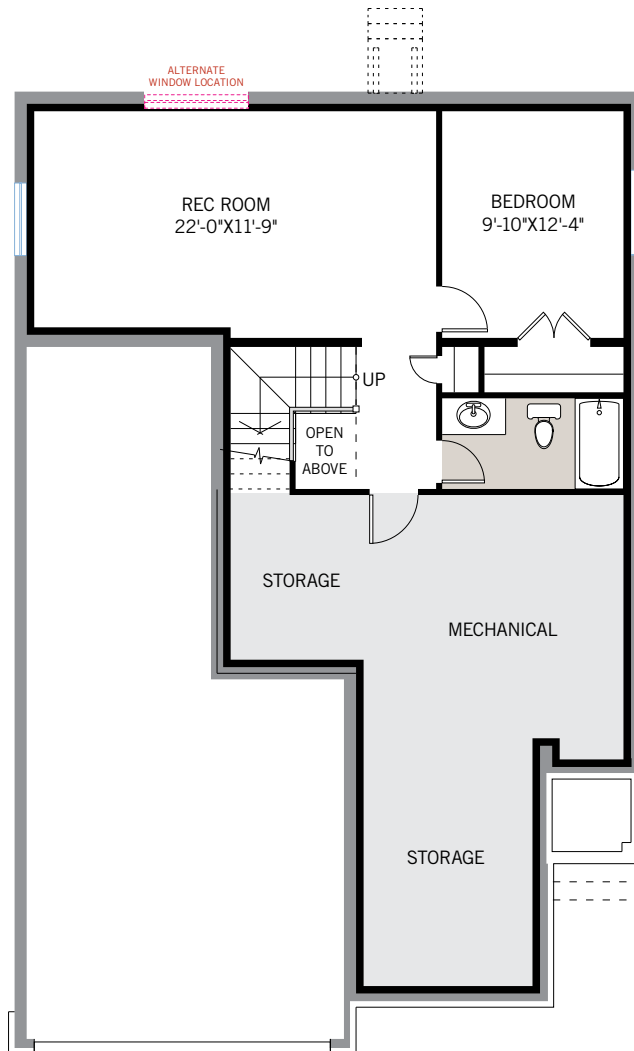
MILLER'S
CROSSING

2,456 SQ FT
4 BED / 5TH BED OPTION
2.5 BATH

CARDEL
HOMES



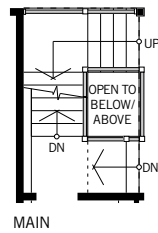
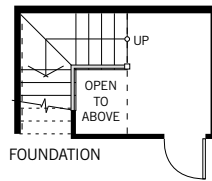
FLOORPLAN OPTIONS



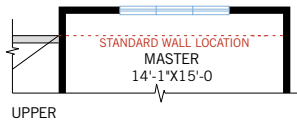
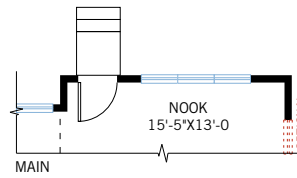
OPTION #15
Developed Basement
- adds 632 sq ft

OPTION #18
9' Basement Ceiling

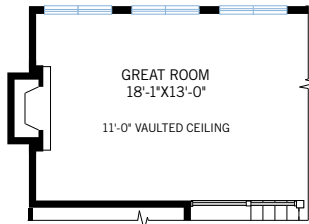
FLOORPLAN OPTIONS



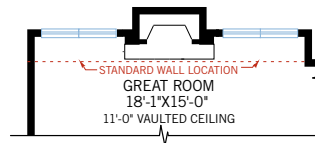
OPTION #1
Developed Basement Stairs
- adds 65 sq ft



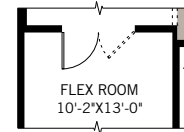
OPTION #4
Extended Nook & Master Bedroom
- add 32 sq ft main floor and upper floor



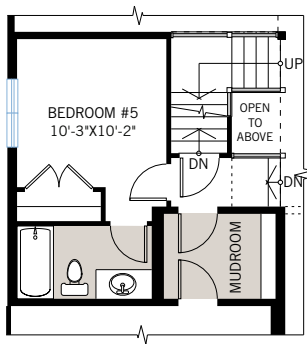
OPTION #6
Great Room Side Fireplace



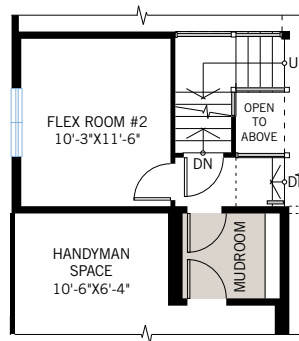
OPTION #7
Extended Great Room
- adds 38 sq ft



OPTION #8
Flex Room Double Doors



OPTION #16
Optional Nanny Suite
- not available in conjunction w/
Options #12 & #17
- adds 197 sq ft



OPTION #17
Optional Second Flex Room
- not available in conjunction with
Options #12 & #16
- adds 134 sq ft