
THE BRISTOL



MODERN URBAN A3



CANADIANA A1

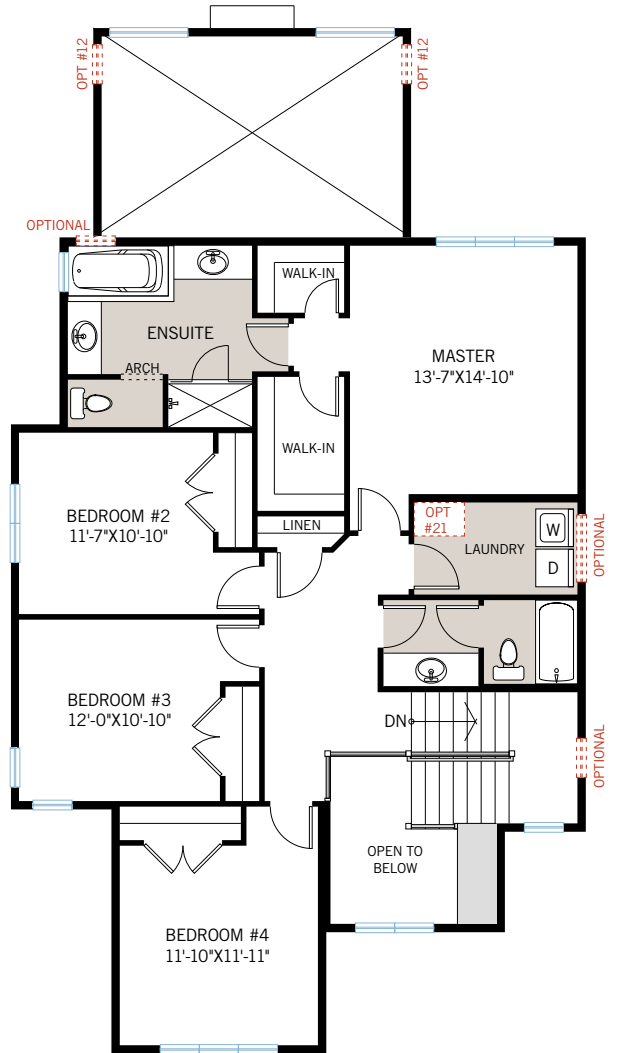
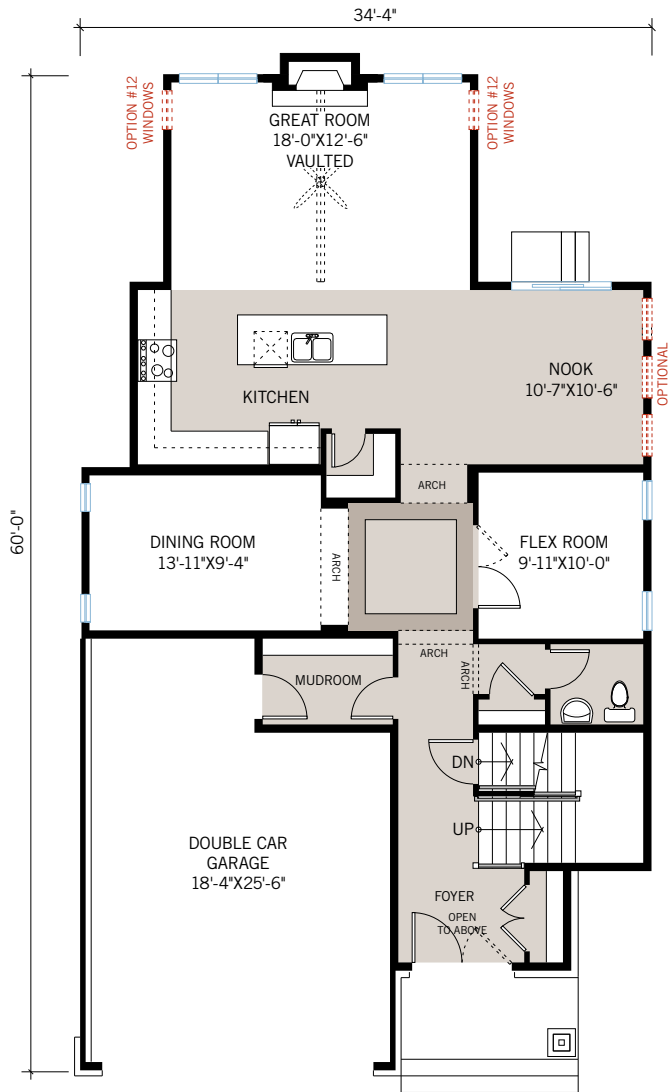


TRADITIONAL A2

RICHMOND'S
CreekSide

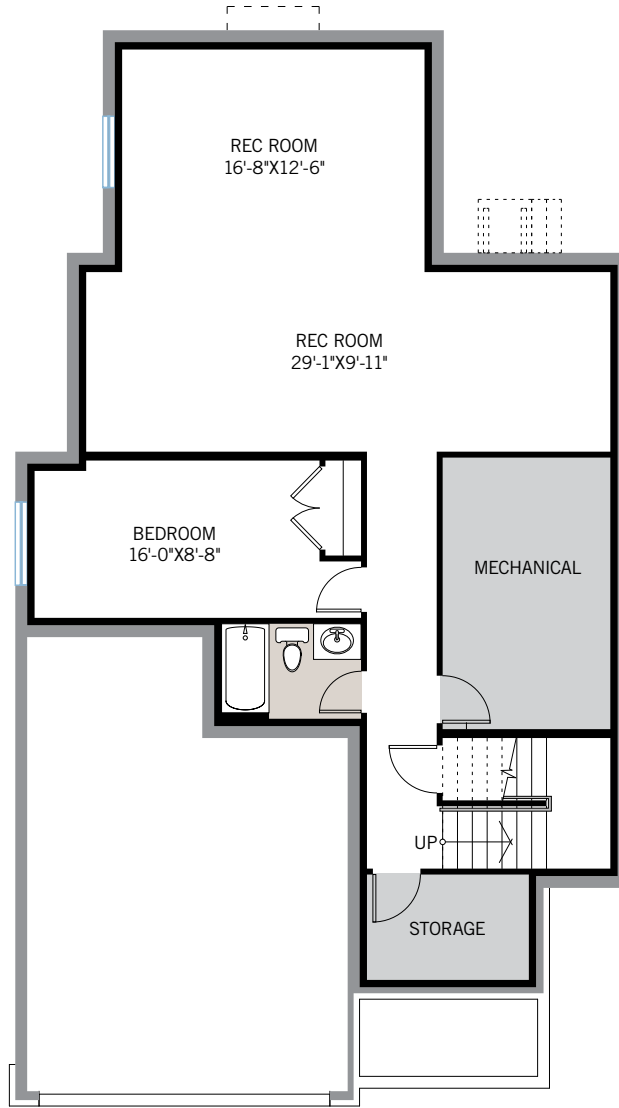
2,646 SQ FT
4 BED
2.5 BATH

CARDEL
HOMES



OPTION #10
9' Upper Floor Ceiling

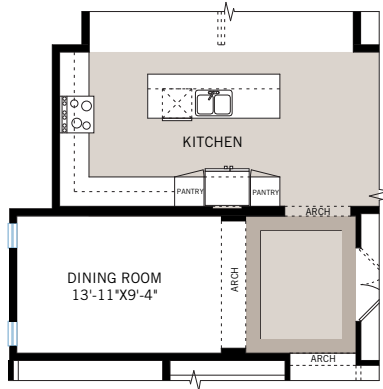
OPTIONAL DEVELOPED BASEMENT



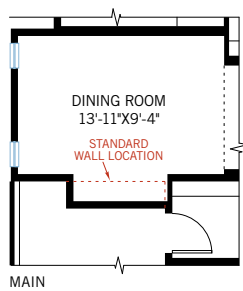
OPTION #15
Developed Basement
- adds 963 sq ft

OPTION #18
9' Basement Ceiling

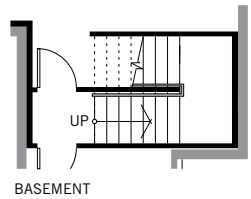
FLOORPLAN OPTIONS



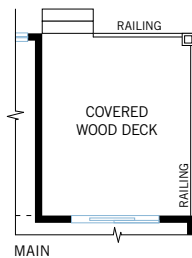
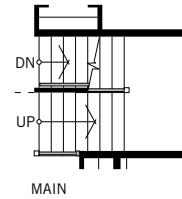
OPTION #2
Alternate Kitchen



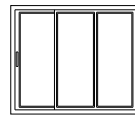
OPTION #5
Dining Room Extension
- adds 12 sq ft main floor



OPTION #1
Developed Basement Stairs
- adds 21 sq ft



OPTION #9
Covered Rear Deck
- not available with Option #12 windows
- 128 sq ft deck



OPTION #9A
8'-0" High 3 Panel Patio Slider
- located in nook