

THE MARTIN



CRAFTSMAN



MEDITERRANEAN

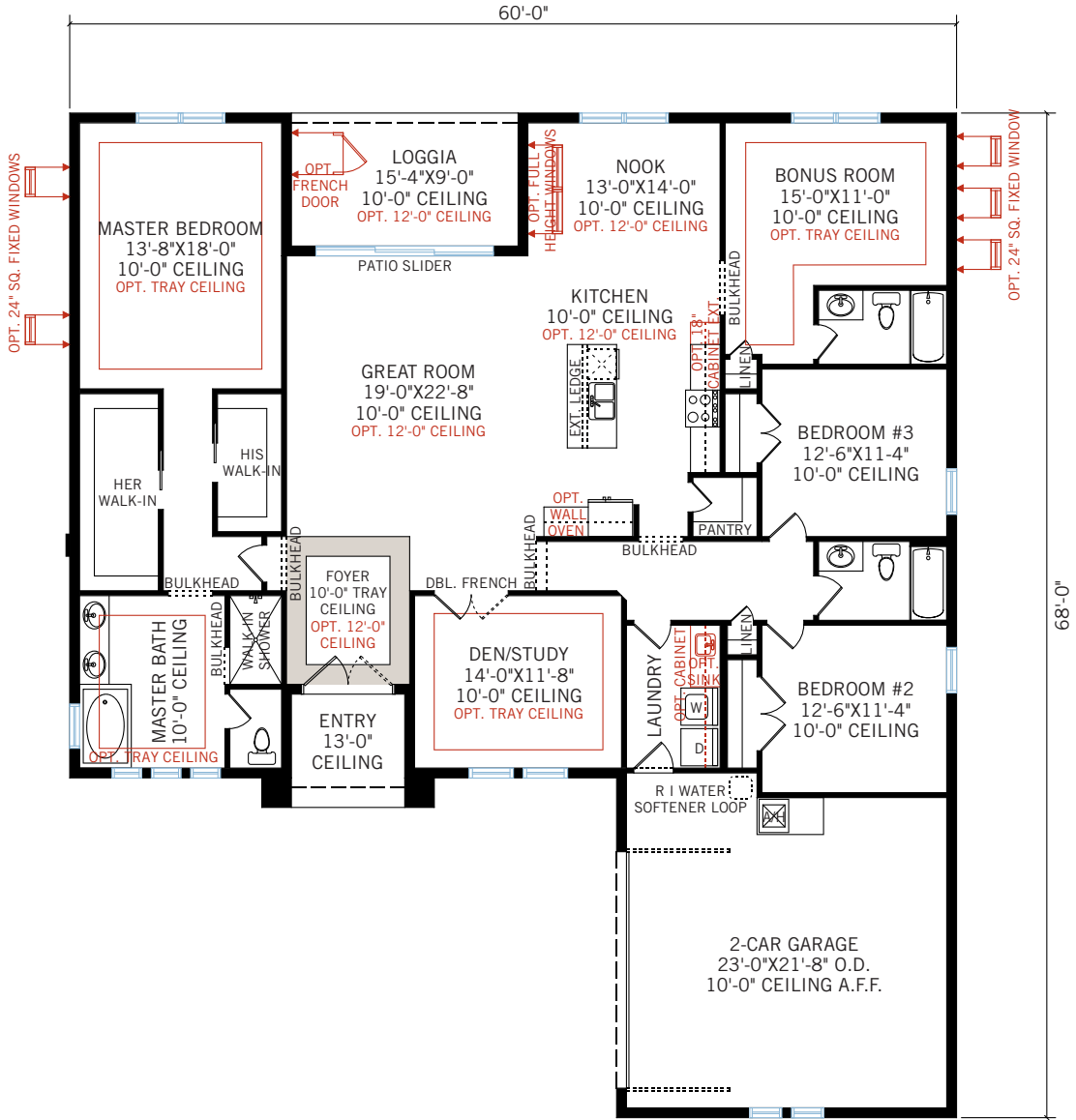


TRADITIONAL

BEXLEY[™]
BY
NEWLAND

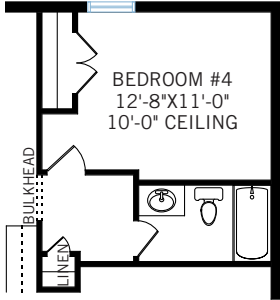
2,533 SQ FT-2,805 SQ FT
3-4 BED 3 BATH

CARDEL
HOMES

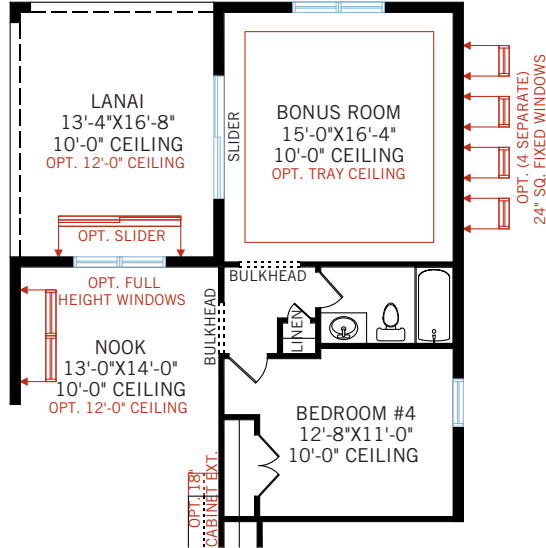


MAIN FLOOR	2,533 SQ FT
GARAGE	514 SQ FT
ENTRY	67 SQ FT
LOGGIA	138 SQ FT
TOTAL UNDER ROOF	3,252 SQ FT

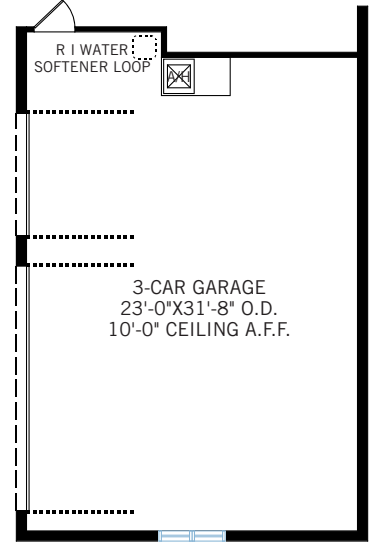
FLOORPLAN OPTIONS



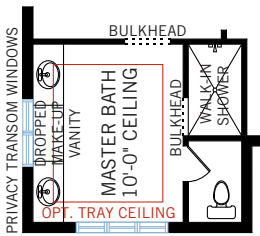
OPTION #2
Bedroom #4 replaces bonus room



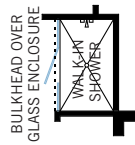
OPTION #3
Bedroom #4 with additional bonus room and lanai
- adds 272 sq ft to living space
- additional Lanai is 222 sq ft



OPTION #4
3-car garage
- adds 230 sq ft to garage

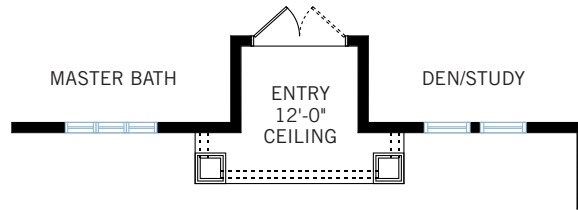


OPTION #5
Extended master bathroom countertops with vanity space
- bathtub removed
- 24" tall transom windows

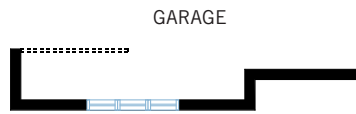


OPTION #6
Master shower glass enclosure

ELEVATIONS



CRAFTSMAN ENTRY
89 sq ft



CRAFTSMAN GARAGE
Adds 32 sq ft



TRADITIONAL GARAGE
Adds 23 sq ft