

THE HENLEY



MEDITERRANEAN



CRAFTSMAN WITH OPTION #3



TRADITIONAL

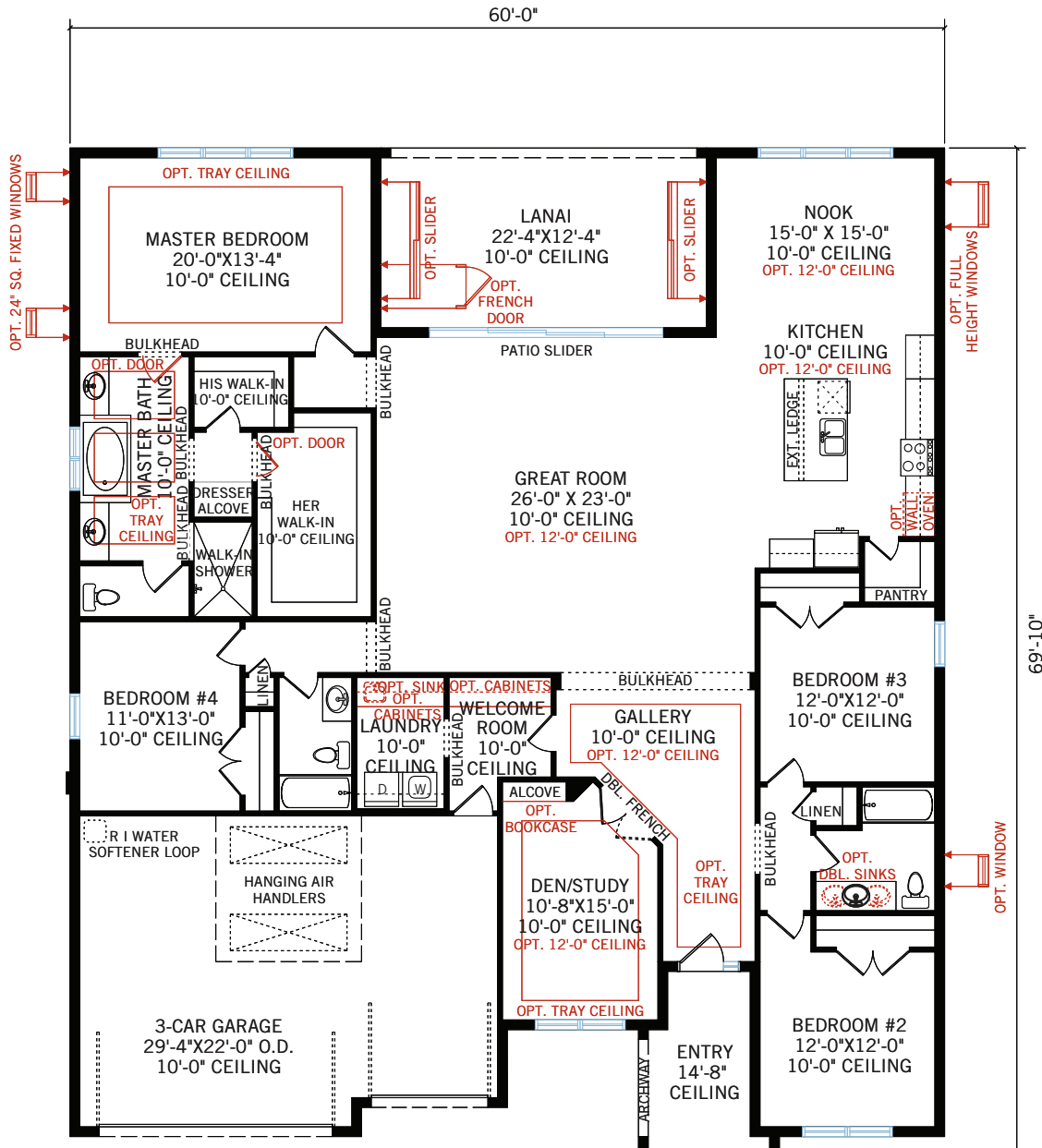


3,000 SQ FT-3,939 SQ FT
4-5 BED 3-4 BATH

CARDEL
HOMES

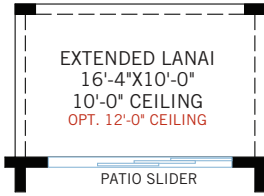
MAIN FLOOR

3,000 SQ FT

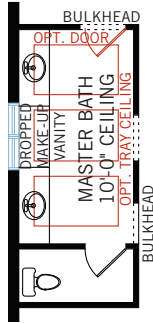


MAIN FLOOR	3,000 SQ FT
GARAGE	630 SQ FT
ENTRY	92 SQ FT
LANAI	275 SQ FT
TOTAL UNDER ROOF	3,997 SQ FT

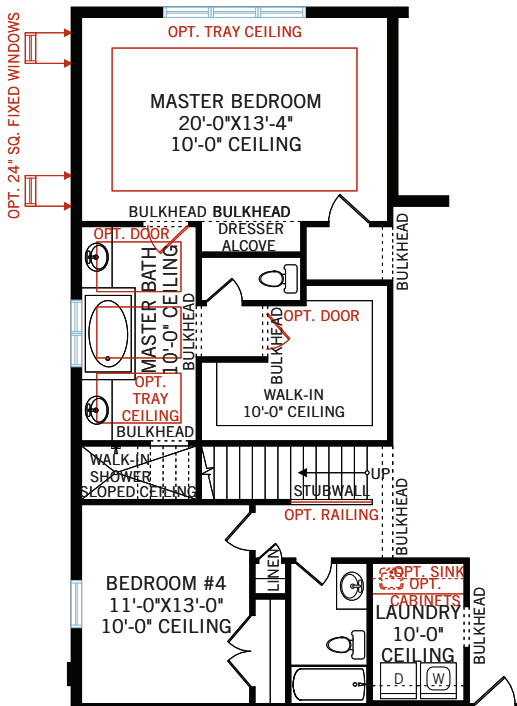
FLOORPLAN OPTIONS



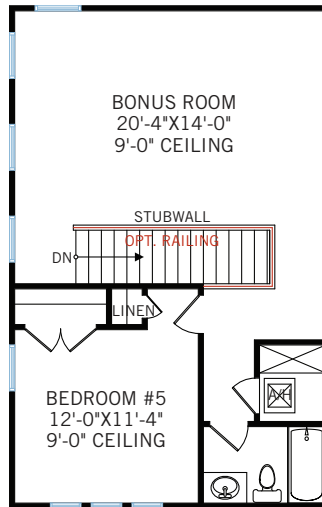
OPTION #2
Extended lanai from nook
- adds 163 sq ft



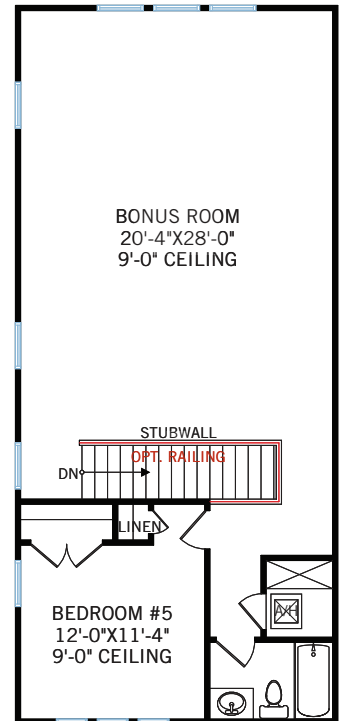
OPTION #4
Extended master bathroom
countertops with vanity space
- bathtub removed
- 24' tall transom windows



OPTION #3
Upper floor bedroom and bonus room
- main floor layout

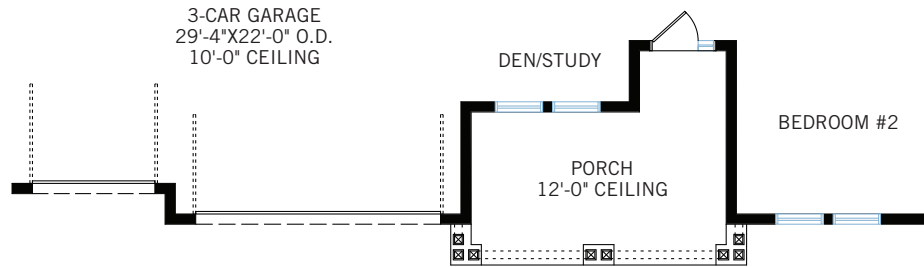


OPTION #3A
Upper floor bedroom and bonus room
- upper floor layout
- adds 645 sq ft

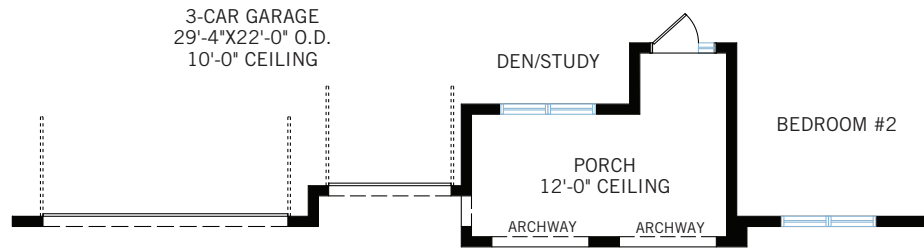


OPTION #3B
Upper floor bedroom and
extended bonus room
- upper floor layout
- adds 939 sq ft

ELEVATIONS



CRAFTSMAN ENTRY
196 sq ft



TRADITIONAL ENTRY
171 sq ft