

---

# THE CORDERO

---



MODERN A3



CANADIANA A1



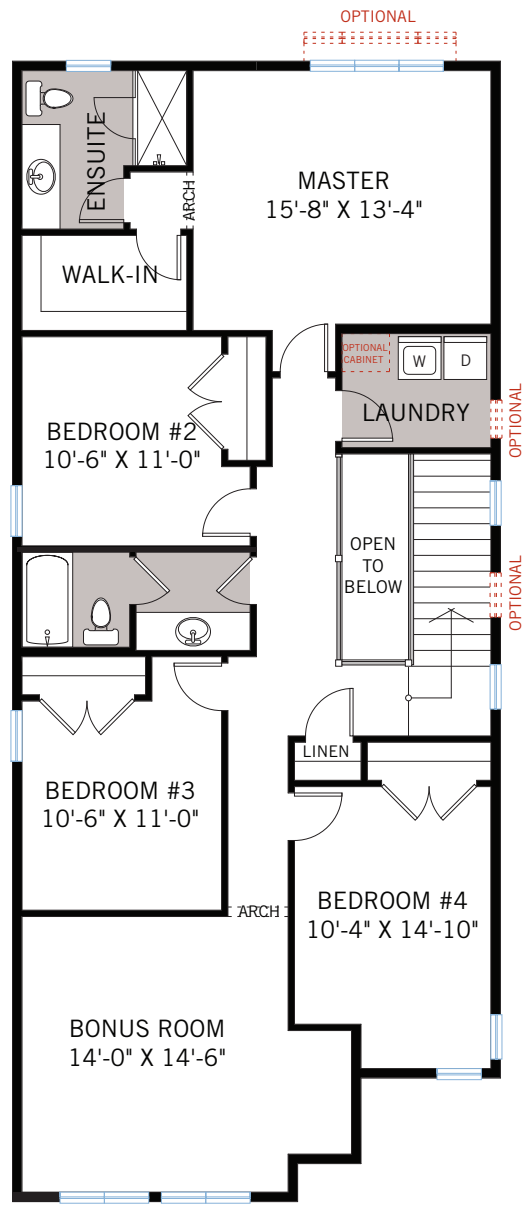
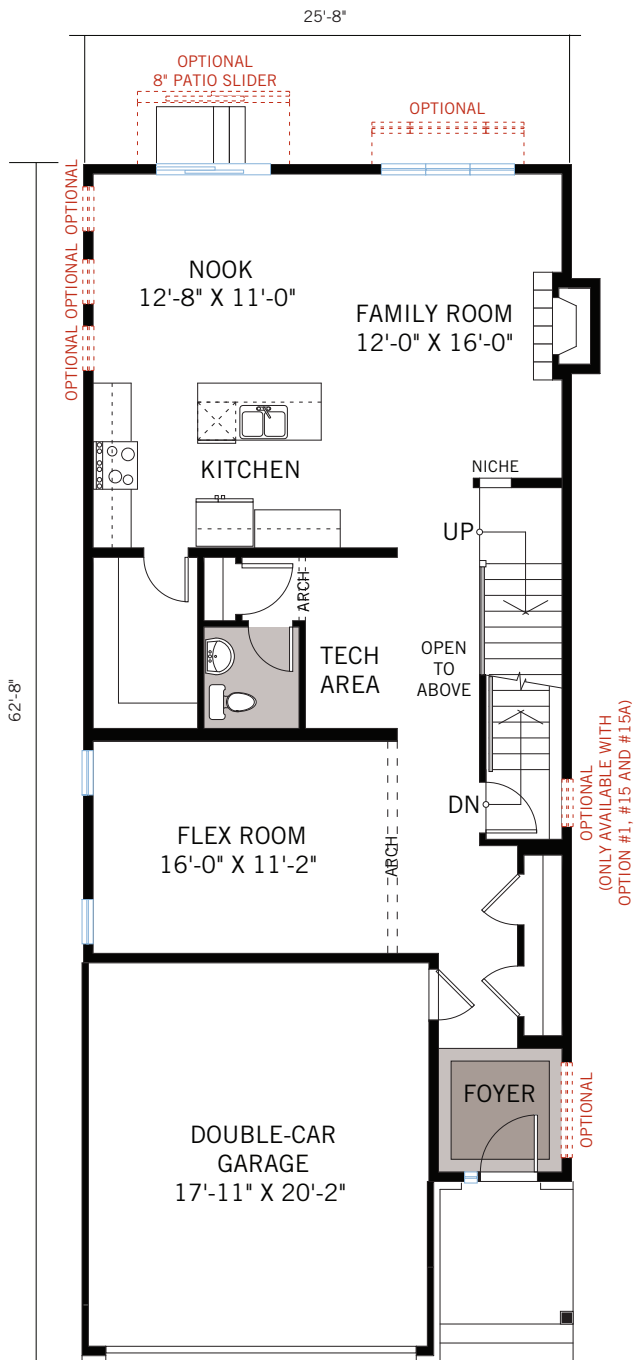
TRADITIONAL A2



EdenWylde

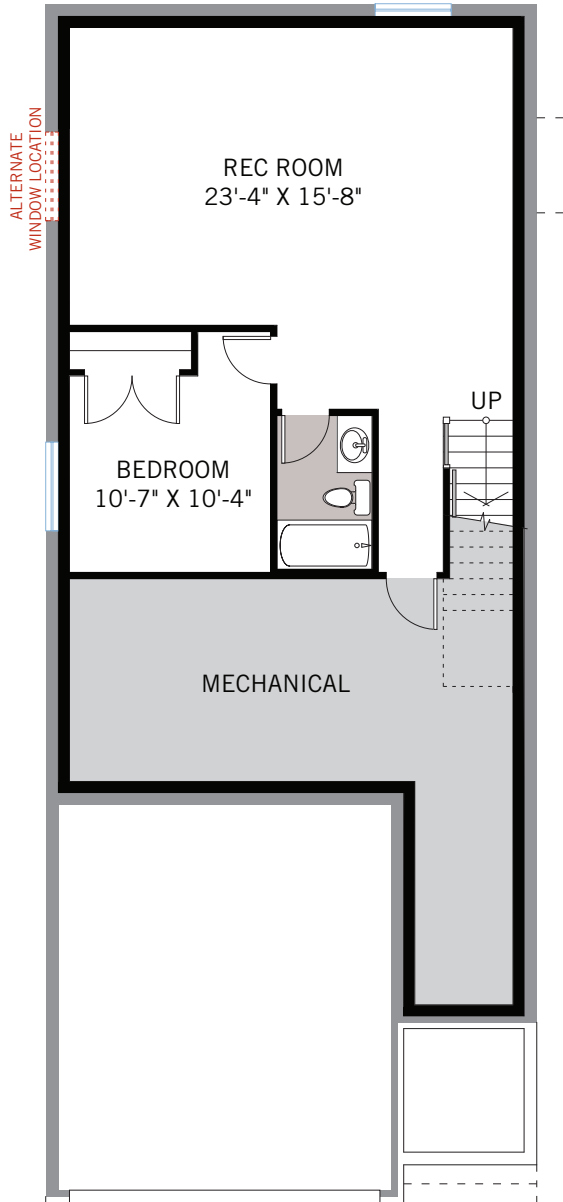
2,640 SQ FT  
4 BED + BONUS ROOM  
2.5 BATH

CARDEL  
HOMES

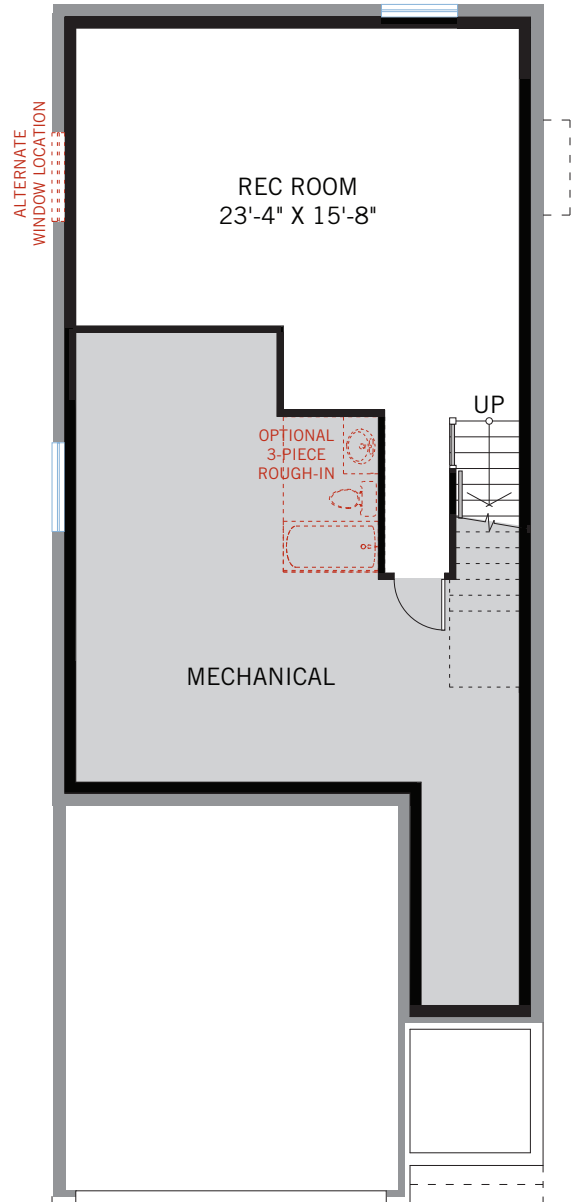


OPTION #10  
9'-0" Upper Floor Ceiling

OPTIONAL DEVELOPED BASEMENT



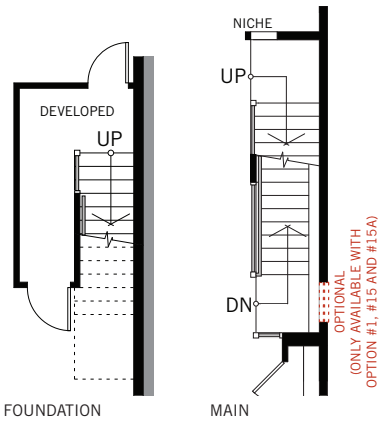
**OPTION #15**  
Developed Basement  
- adds 735 sq ft



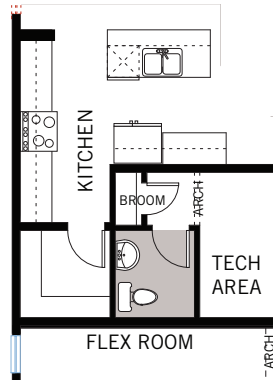
**OPTION #15A**  
Developed Rec Room  
- adds 543 sq ft

**OPTION #18**  
9'-0" Basement Ceiling

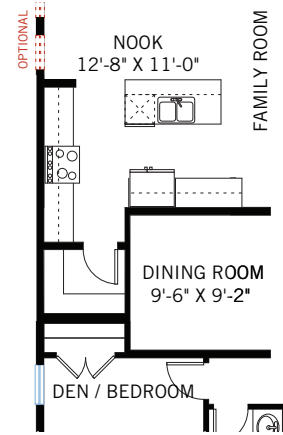
# FLOORPLAN OPTIONS



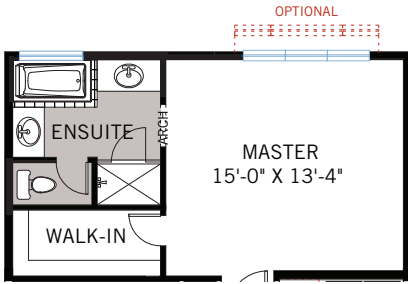
**OPTION #1**  
Developed Basement Stairs  
- adds 70 sq ft basement landing



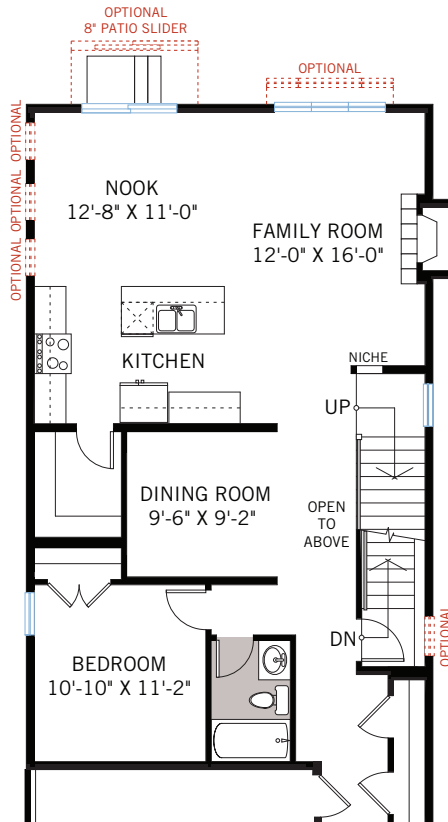
**OPTION #2A**  
Extended Kitchen  
- not available with Options #2B, #8 and #9



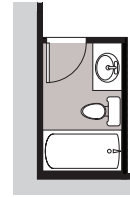
**OPTION #2B**  
Extended Kitchen  
- only available with Option #8  
- not available with Option #2A



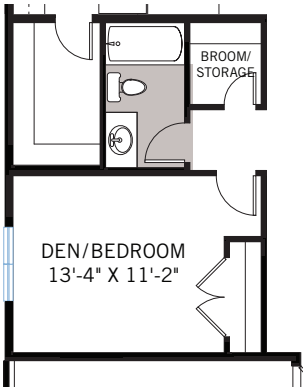
**OPTION #3**  
Alternate Master Ensuite



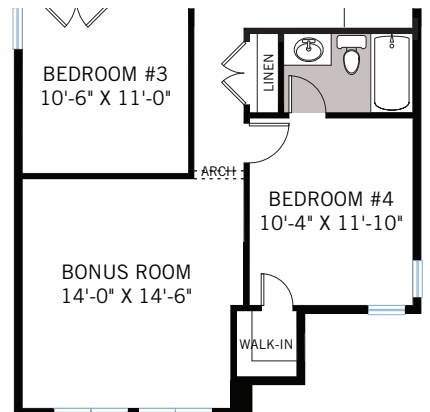
**OPTION #8**  
Alternate Main Floor  
- not available with Option #2A



**OPTION #15B**  
Developed Basement Bathroom  
- only available with Option #15A  
- adds 45 sq ft



**OPTION #9**  
Main Floor Den/Bedroom with Full Bath  
- only available with Standard Main Floor  
- not available with Option #2A or Option #8



**OPTION #22**  
Bedroom with Bathroom