

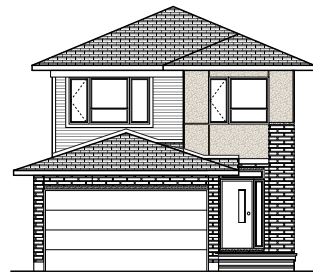
# THE BAXTER



TRADITIONAL A2



CANADIANA A1

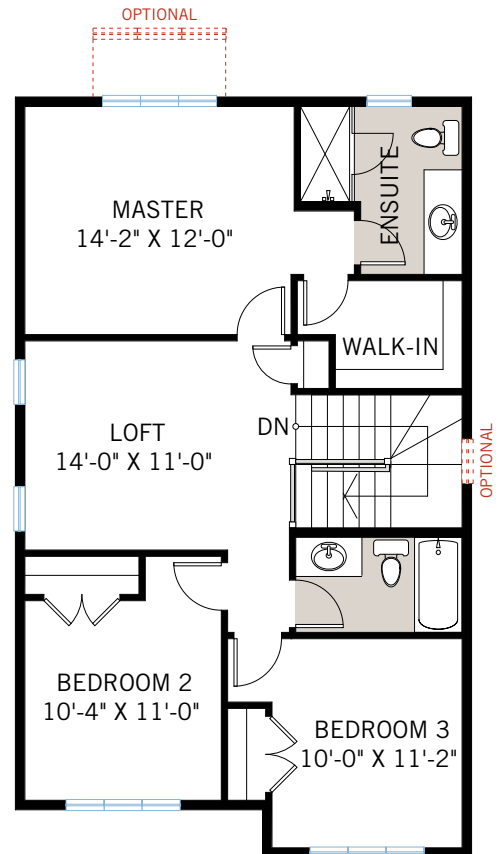
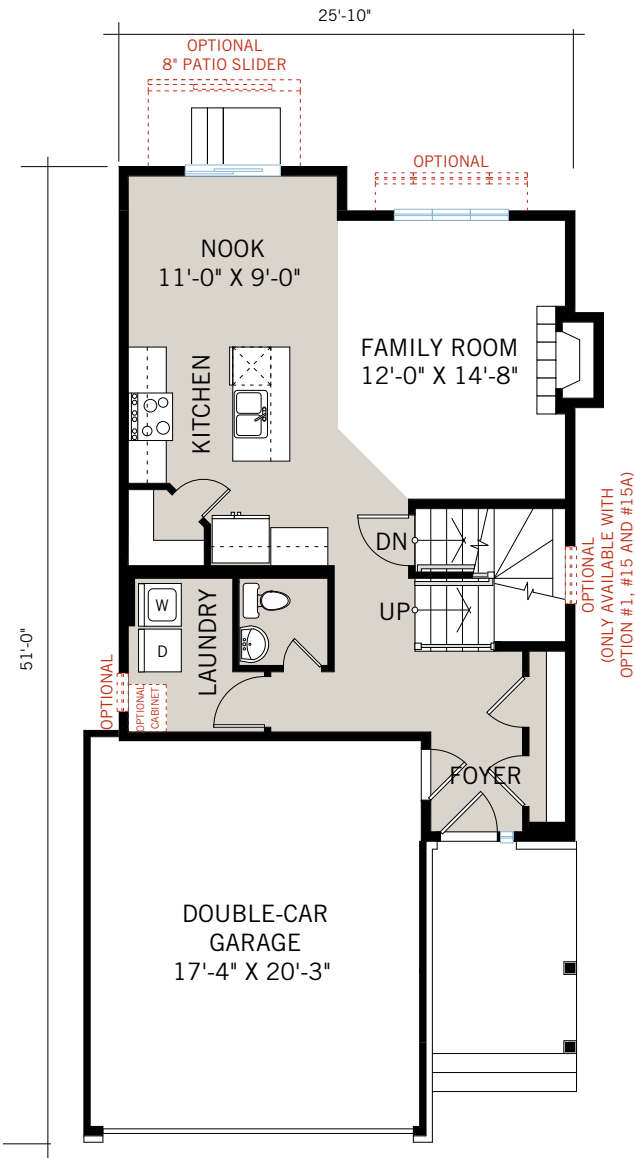


MODERN A3

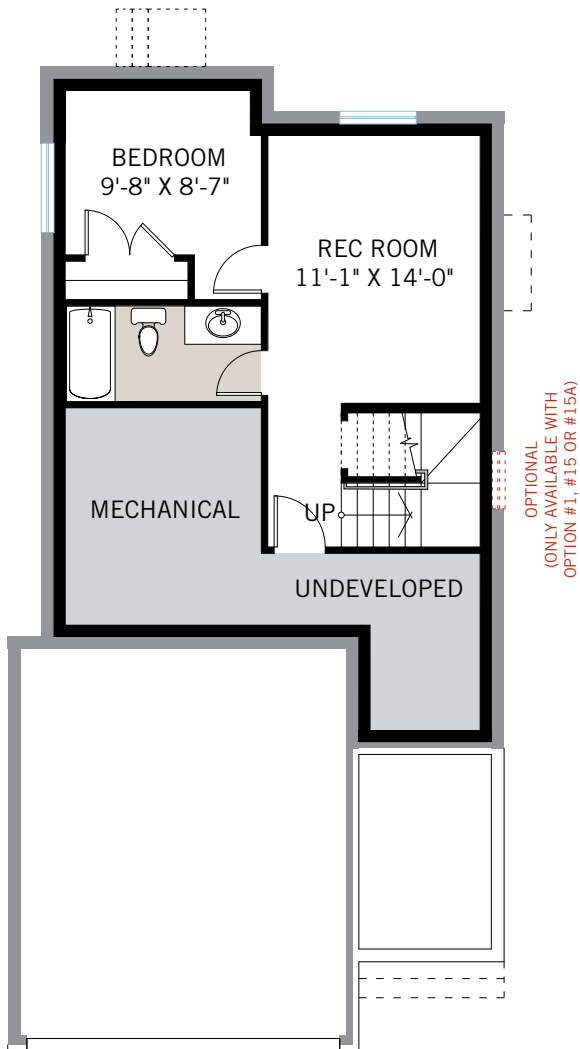


1,702 SQ FT  
3 BED + LOFT/4TH BEDROOM OPTION  
2.5 BATH

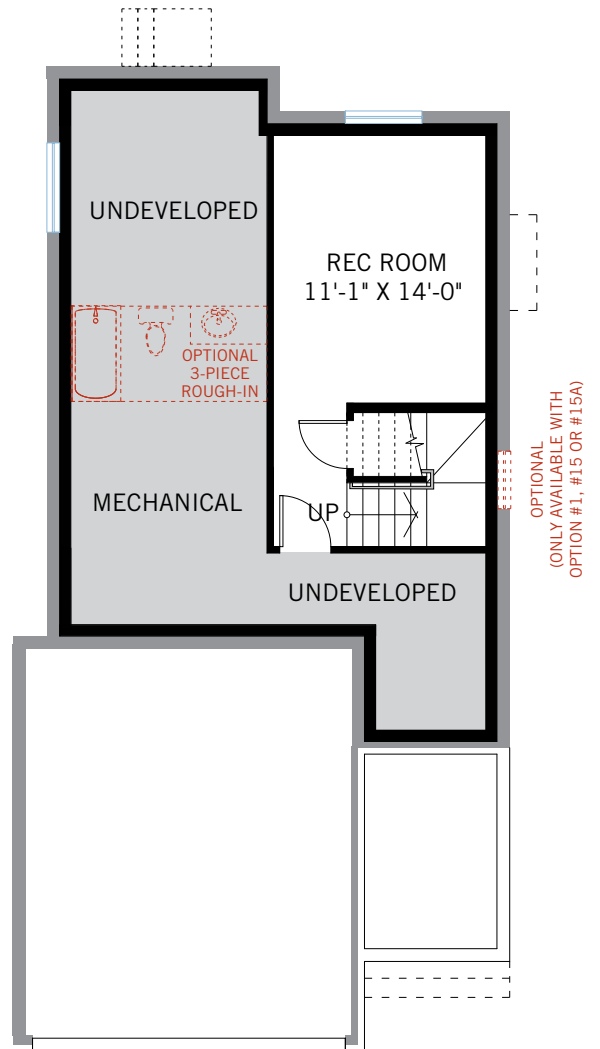
CARDEL  
HOMES



OPTIONAL DEVELOPED BASEMENT



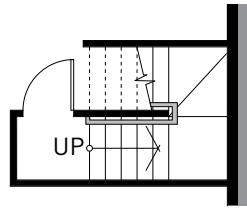
OPTION #15  
Developed Basement  
- adds 432 sq ft



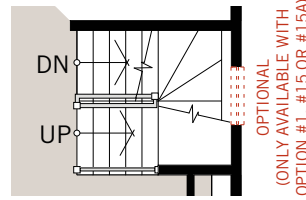
OPTION #15A  
Developed Rec Room  
- adds 230 sq ft

OPTION #18  
9' Basement Ceiling

## FLOORPLAN OPTIONS



FOUNDATION

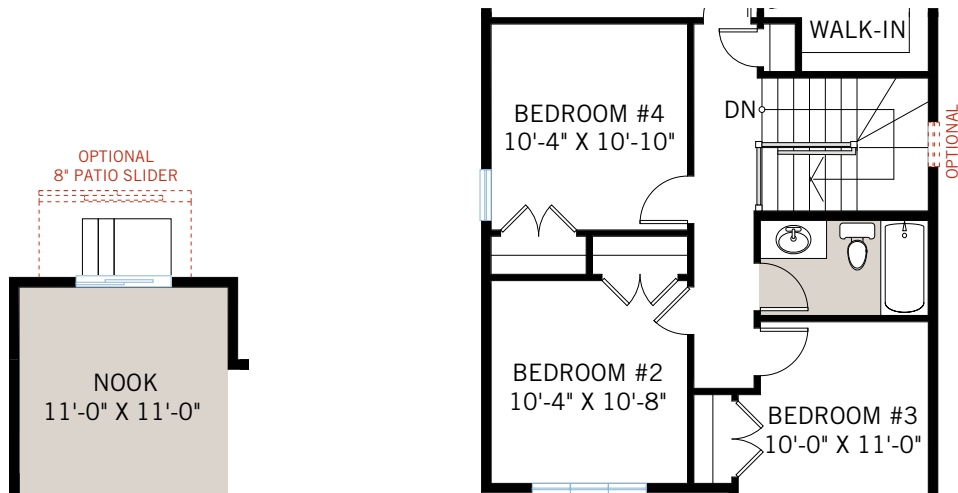


MAIN

OPTIONAL  
(ONLY AVAILABLE WITH  
OPTION #1, #15 OR #15A)

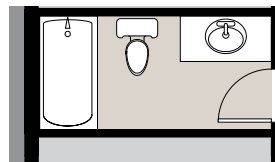
### OPTION #1

Developed Basement Stairs  
- adds 17 sq ft basement landing



OPTION #2  
Nook Extension  
- adds 24 sq ft

OPTION #8  
4th Bedroom



### OPTION #15B

Developed Basement Bath  
- only available with Option #15A  
- adds 65 sq ft