
THE CORDERO



MODERN A3



CANADIANA A1



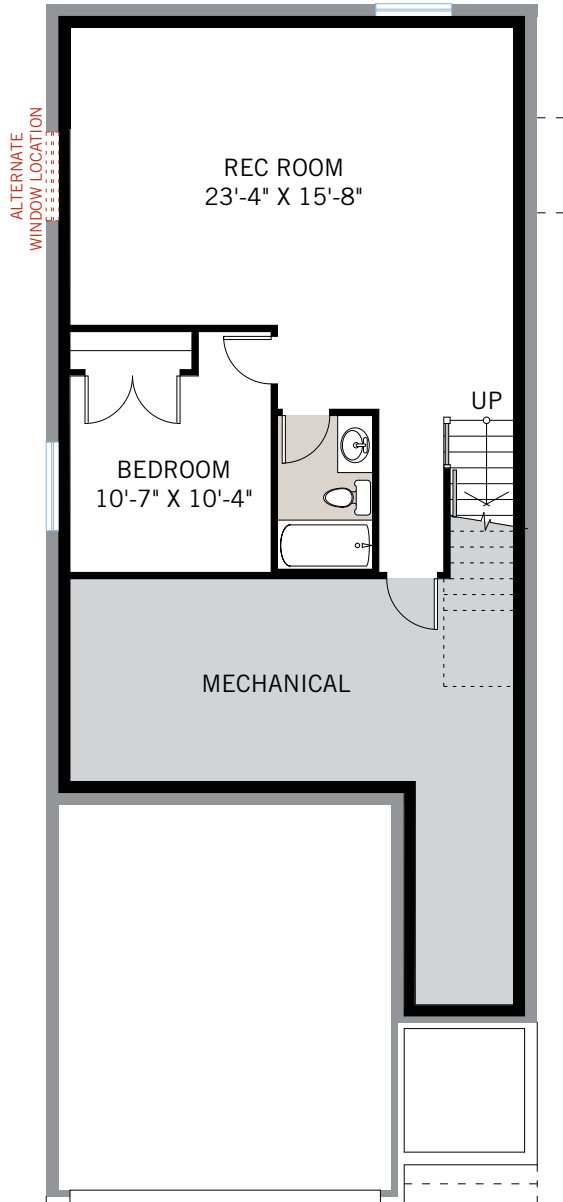
TRADITIONAL A2



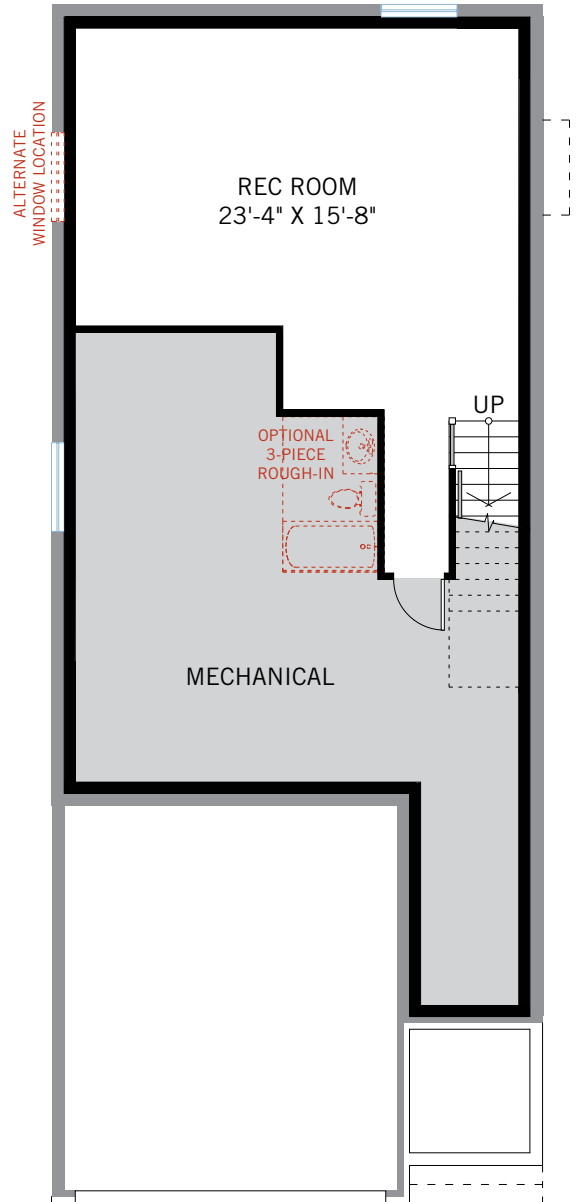
2,640 SQ FT
4 BED + BONUS ROOM
2.5 BATH

CARDEL
HOMES

OPTIONAL DEVELOPED BASEMENT



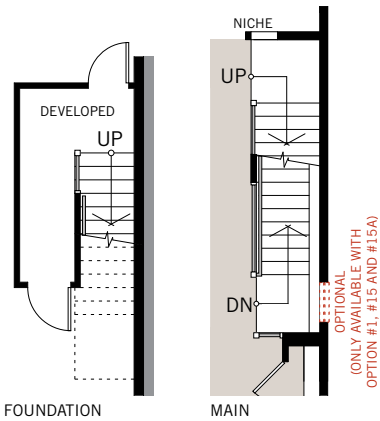
OPTION #15
Developed Basement
- adds 735 sq ft



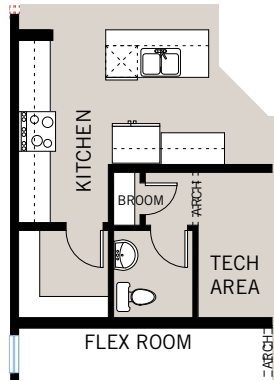
OPTION #15A
Developed Rec Room
- adds 543 sq ft

OPTION #18
9'-0" Basement Ceiling

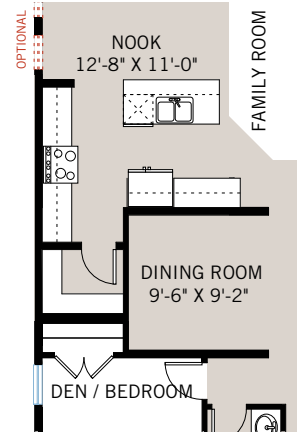
FLOORPLAN OPTIONS



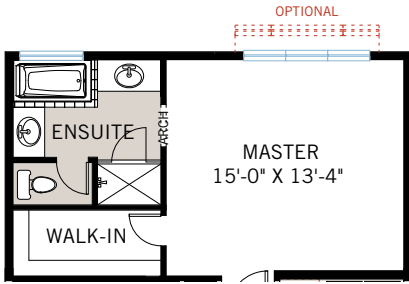
OPTION #1
Developed Basement Stairs
- adds 70 sq ft basement landing



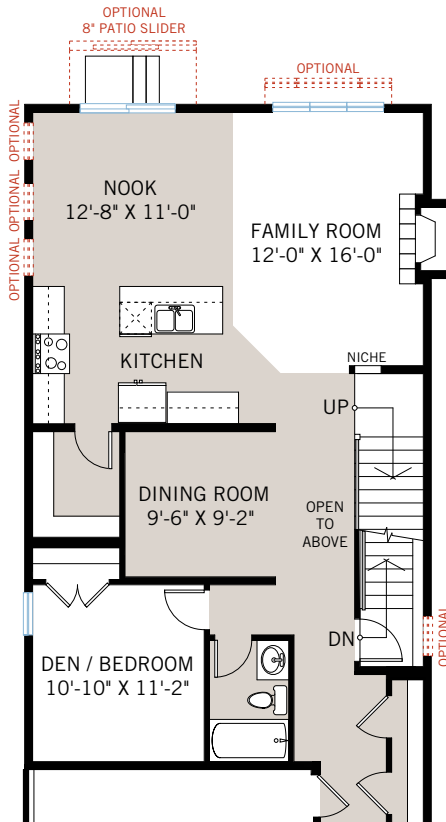
OPTION #2A
Extended Kitchen
- not available with Options #2B, #8 and #9



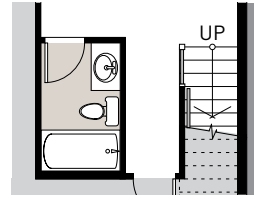
OPTION #2B
Extended Kitchen
- only available with Option #8
- not available with Option #2A



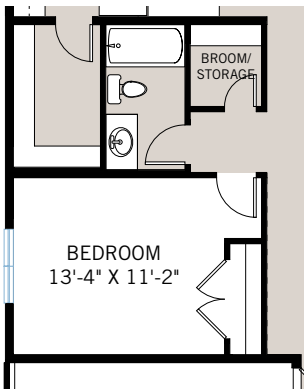
OPTION #3
Alternate Master Ensuite



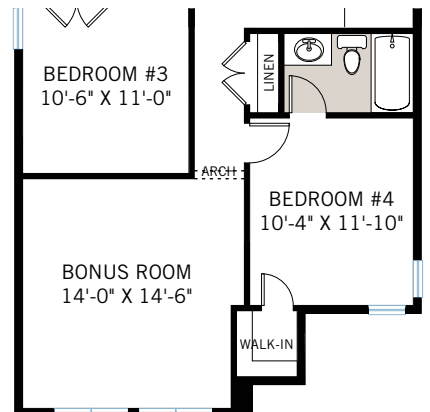
OPTION #8
Alternate Main Floor
- not available with Option #2A



OPTION #15B
Developed Basement Bathroom
- only available with Option #15A
- adds 45 sq ft



OPTION #9
Main Floor Bedroom with Full Bath
- only available with Standard Main Floor
- not available with Option #2A or Option #8



OPTION #22
Bedroom with Bathroom