

THE MADIGAN



CANADIANA A1

*Shown with Option #19 Full Porch



CANADIANA A1



TRADITIONAL A2



MODERN A3



EdenWylde

1,561 SQ FT
3 BED + FINISHED REC ROOM
2.5 BATH

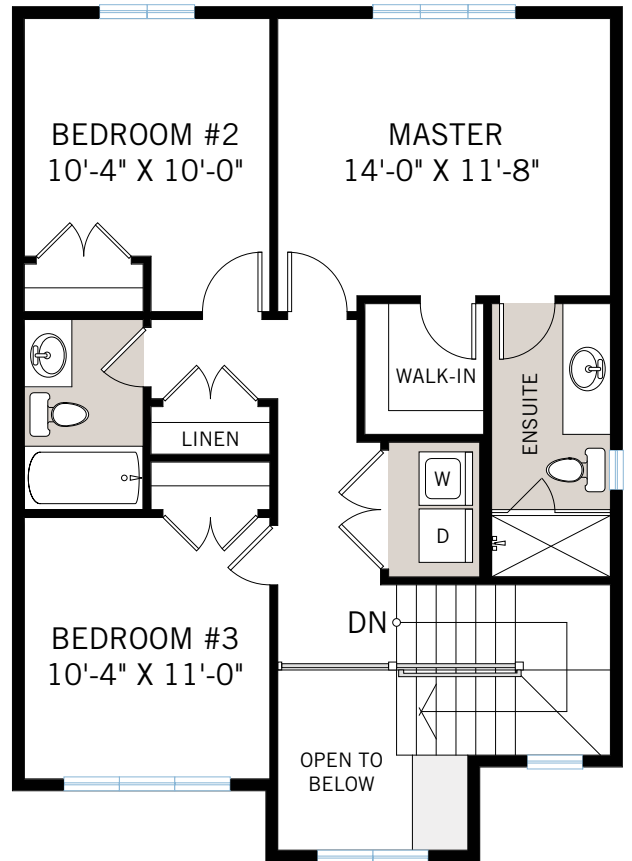
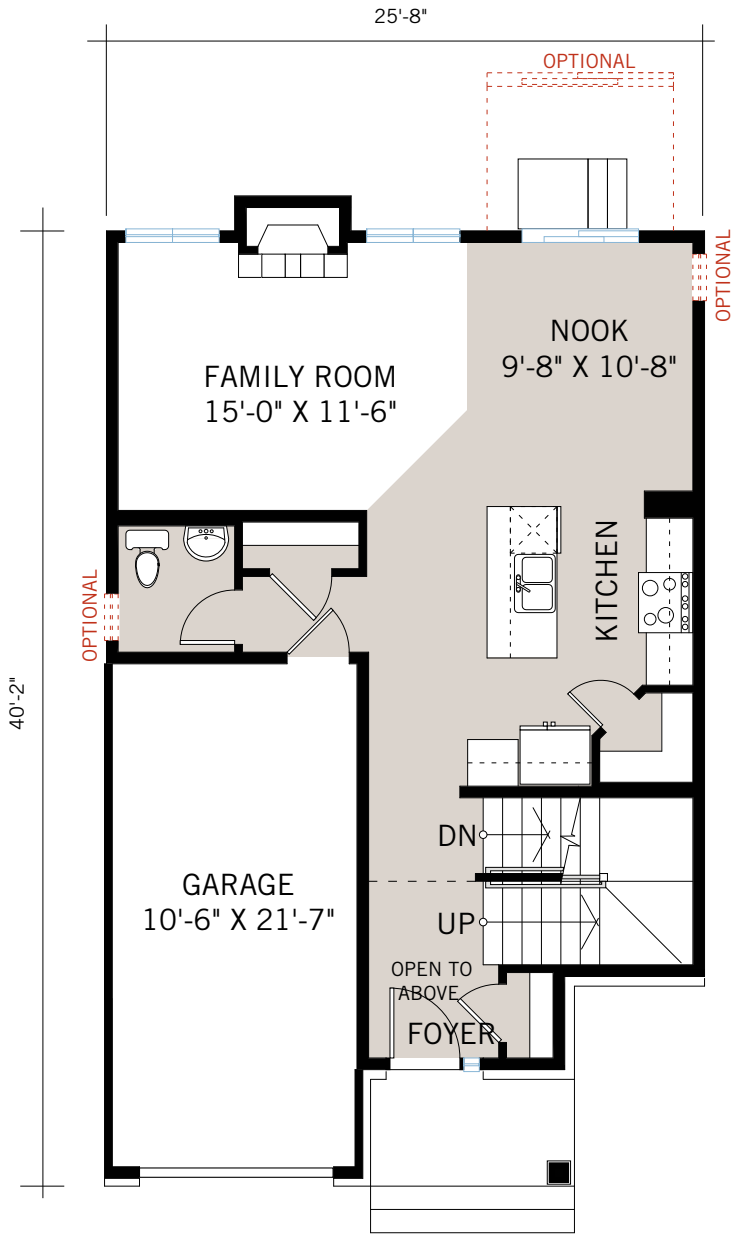
CARDEL
HOMES

MAIN FLOOR

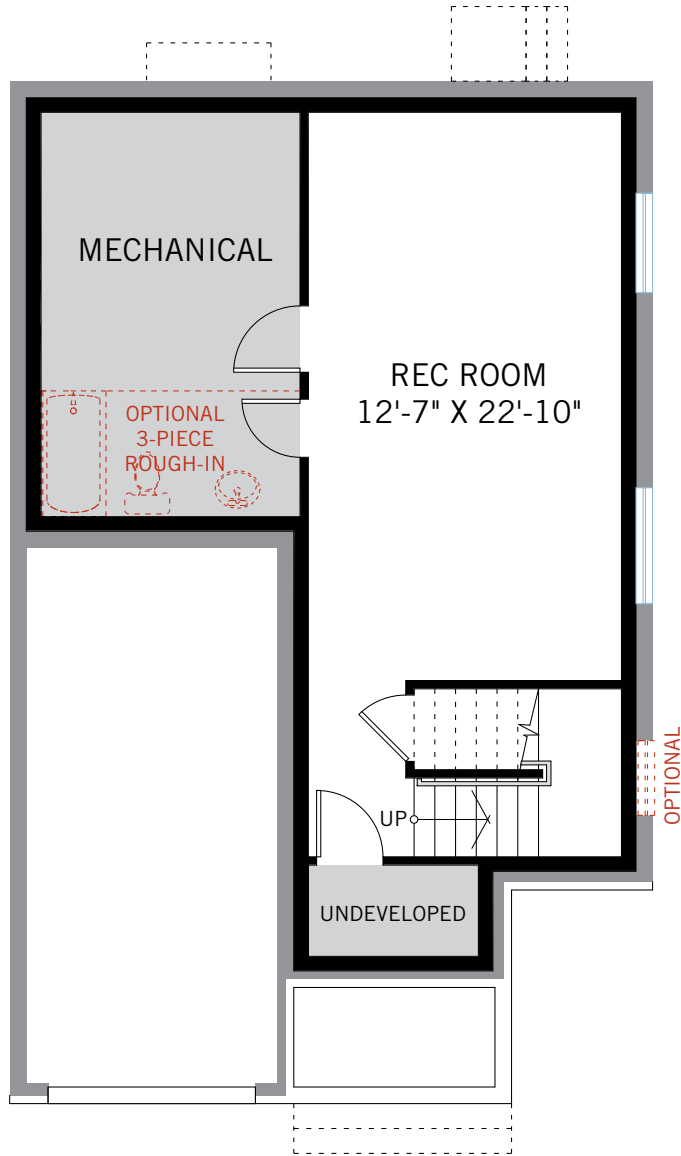
735 SQ FT

UPPER FLOOR

826 SQ FT

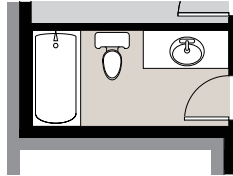


OPTION #10
9'-0" Upper Floor Ceiling

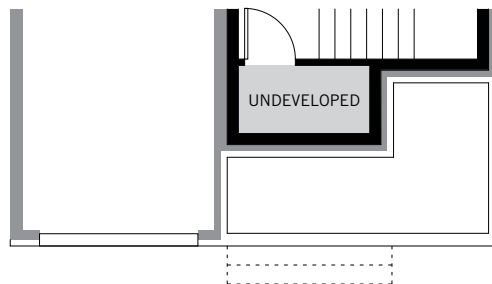


OPTION #18
9'-0" Basement Ceiling

FLOORPLAN OPTIONS



OPTION #15B
Developed Basement Bathroom
- Adds 80 sq ft



OPTION #19
Elevation A1 - Full Porch
- Adds 48 sq ft