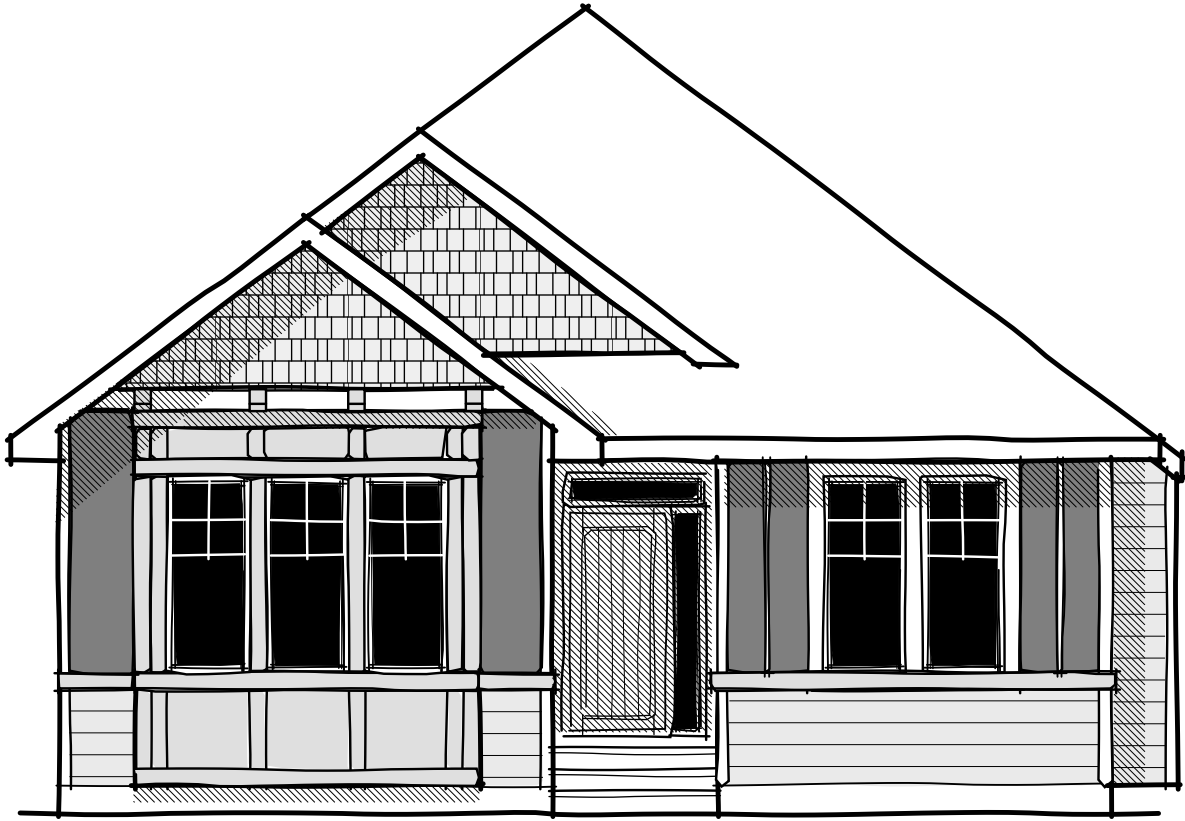

THE CAMBRIA COURT



SHINGLE S1

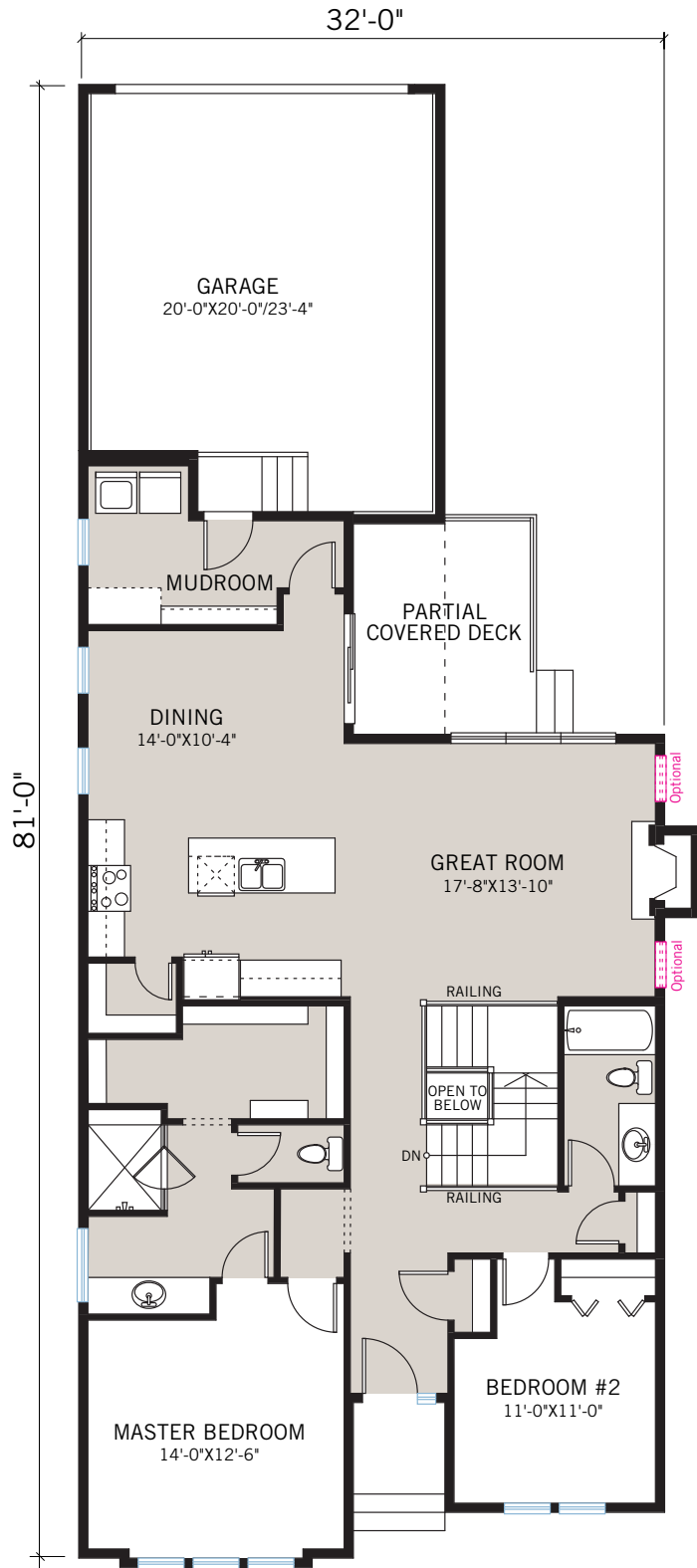


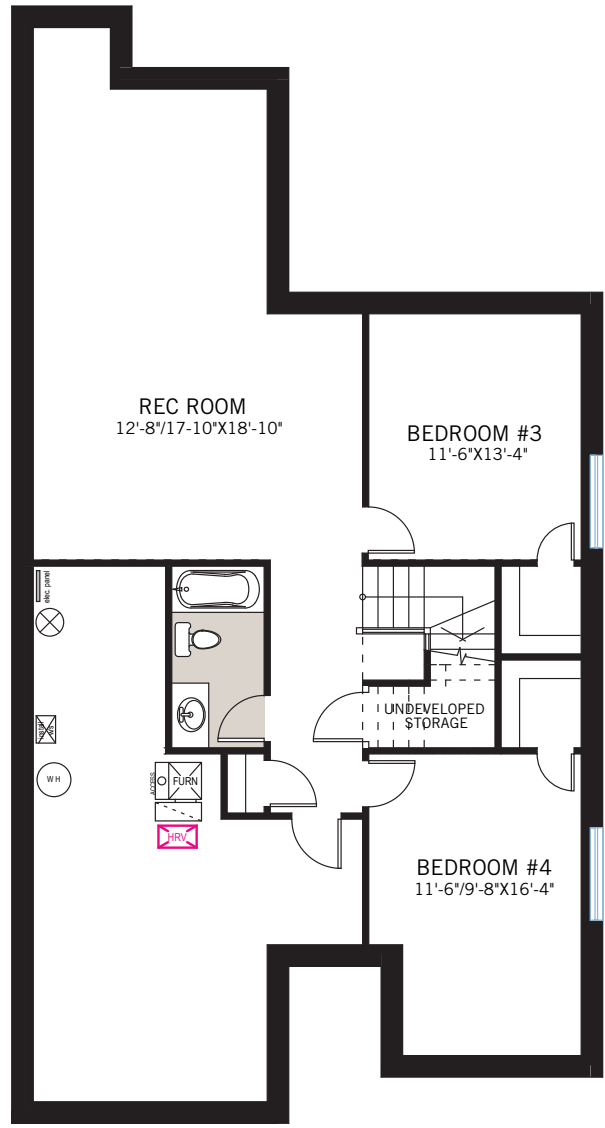
RUSTIC S2


Shawnee
Park

1,609 SQ FT
AVAILABLE IN PHASE 5

CARDEL
HOMES







Built for real life.
CARDELHOMES.COM

September 2018 | Actual plan may vary from brochure. Square footage is calculated using local Home Builder Association guidelines. Construction square footage is 1,547 (main); 1,609 total. This plan is published by Cardel Homes. Dimensions and square footage shown are approximate and subject to change without notice. All rights reserved including the rights of reproduction in whole or part without permission of Publisher E.&O.E. Note: Elevation details are community-specific and are artistic representation only. Please ask your sales representative for further information.

CARDEL
HOMES