

Quick Possession



EMERGE

SAVANNA

21 SAVANNA GREEN NE

\$549,900

2,064 ^{SQ}_{FT}

3 BEDS
2.5 BATHS

FORMER
SHOWHOME

MOVE IN
READY

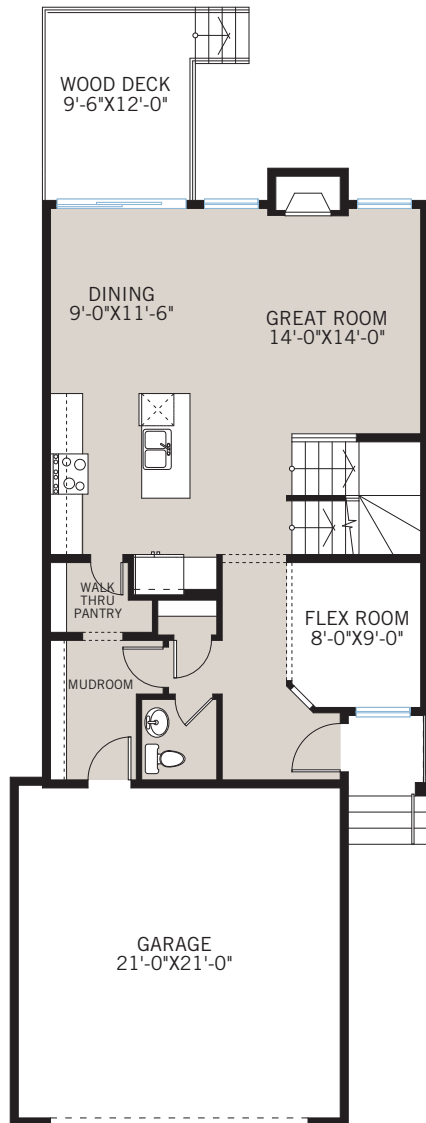
FRONT LANDSCAPING
INCLUDED

SAVANNA
IN SADDLE RIDGE

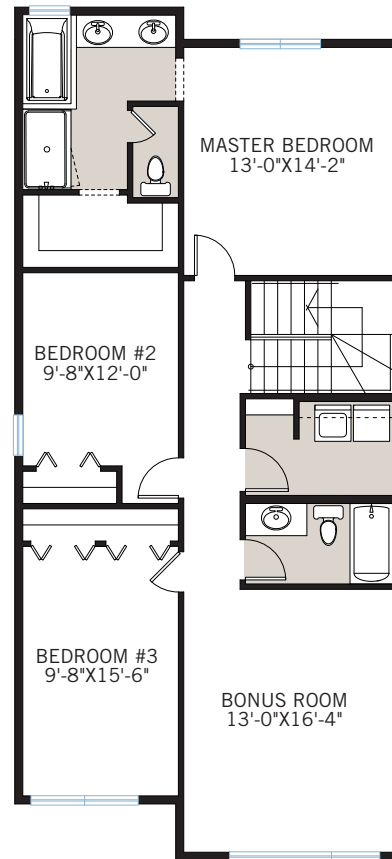
CARDEL
HOMES

FLOORPLAN

MAIN FLOOR | 854 SQ FT



UPPER FLOOR | 1,210 SQ FT



- 3 beds and 2.5 baths
- Option to add second master suite for a total of 4 bedrooms
- Upper floor laundry
- Quartz kitchen countertops
- Stainless steel appliance package

INCLUDED OPTIONS:

- 01A-alternate kitchen,
- 10B-alternate ensuite
- 16A-alternate upper floor

INTERIOR



INCLUDED FEATURES

- 9' main floor ceilings
- Developed basement stairwell
- Dual glazed low-e windows
- Custom Huntwood brand cabinetry package including:
 - Solid maple doors and drawers
 - Soft close hardware
 - Dovetail drawer construction
 - Premium hardware
 - Nutmeg stain color
- Premium level quartz countertops
- Premium level kitchen backsplash
- Delta Kitchen Faucet
- Stainless steel appliance package (fridge, stove, dishwasher, microwave)
- Custom Fireplace detail
- Premium level engineered oak hardwood flooring
- Upgraded railing
- Upgraded smooth interior doors
- Dual ensuite sinks
- Premium wall tile package
- Moen plumbing faucets and fixtures
- Gas line rough in to deck
- Upgraded pot lighting
- Upgraded light fixtures
- Heat recovery ventilation system
- Cardel's premium spray foam attic insulation assembly
- Multi-room audio system
- Security system
- Air conditioning
- Garage in-floor heating system
- High Efficiency Furnace
- Exposed aggregate driveway and sidewalk
- Rear deck
- Fully landscaped lot, located in established Phase 1
- Excellent location, across from park

Built for real life.
CARDELHOMES.COM

NEW HOME CONSULTANT: TABI LAM
CALL: 403.454.6556 10 Savanna Gardens NE
E: tabi.lam@cardelhomes.com

CARDEL
HOMES