

Quick Possession



SOHO 4

SAVANNA

9128 52 STREET NE

\$359,900

1,309 SQ
FT

**3 BEDS
2.5 BATHS**

**STAINLESS STEEL
APPLIANCES**

**MOVE IN
READY**

**FRONT LANDSCAPING
INCLUDED**

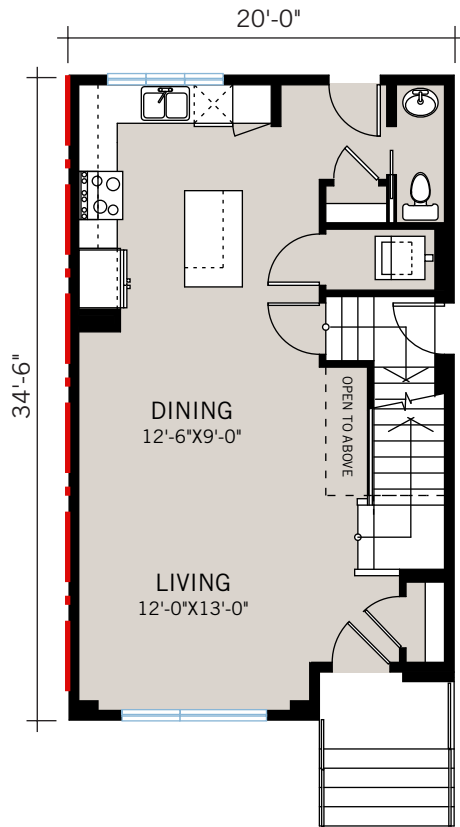
SAVANNA
IN SADDLE RIDGE

SOHO 4
1,309 SQ FT

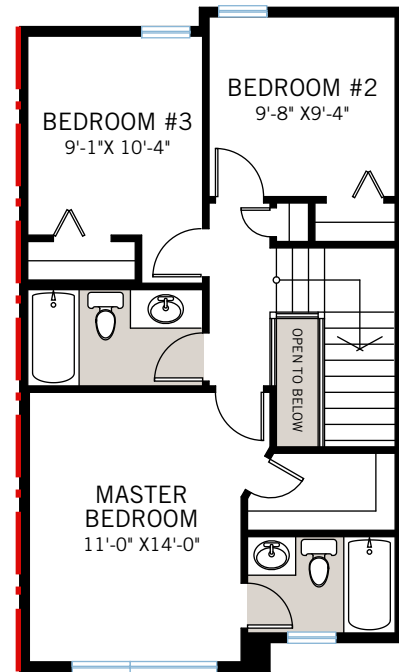
CARDEL
HOMES

FLOORPLAN

MAIN FLOOR | 653 SQ FT



UPPER FLOOR | 656 SQ FT

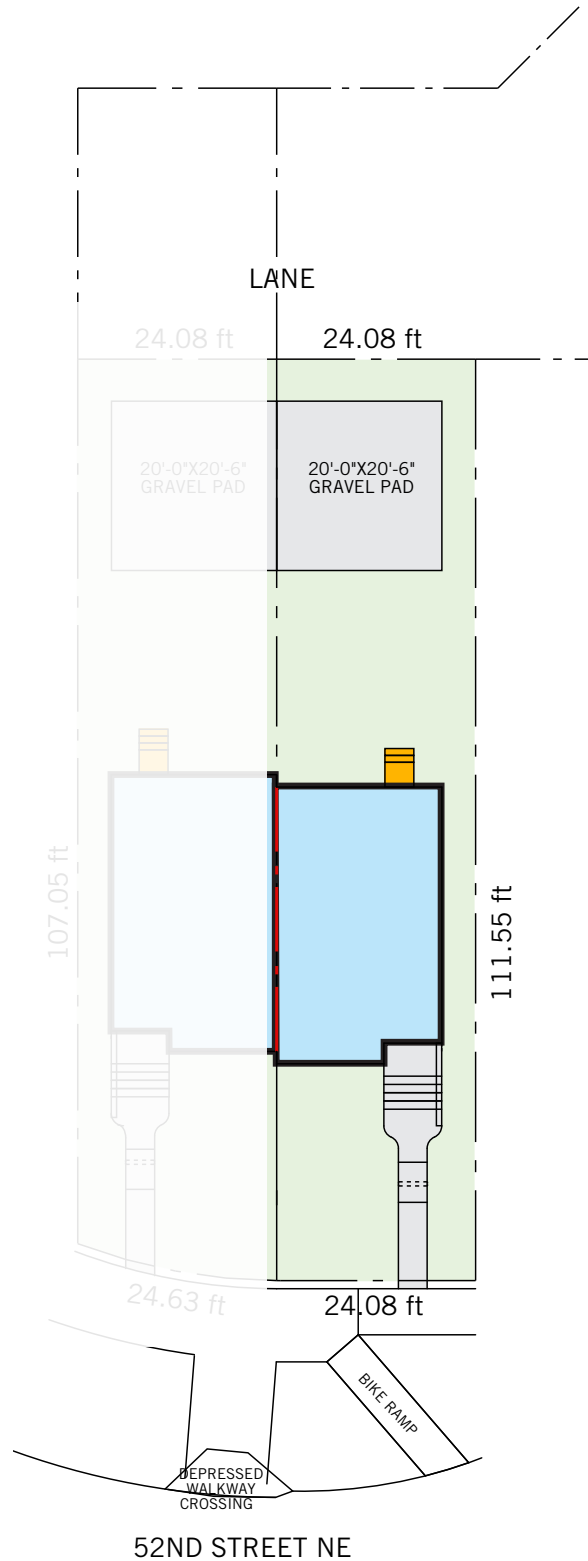


- 9' main floor ceiling
- 9' basement ceiling
- Dual glazed low e windows
- Additional basement window
- Separate sideyard basement access door
- Custom kitchen design with solid maple cabinetry throughout
- Soft close hardware & drawers
- Premium level backsplash
- Quartz countertops throughout
- Upgraded appliance package
- Stair railing
- Luxury vinyl plank flooring
- Upgraded floor tile and carpet
- Upgraded wall tile
- Upgraded light fixture package
- Gas line to deck
- Front yard landscaping and irrigation
- security system
- Exposed aggregate sidewalk

SAVANNA
— IN SADDLE RIDGE —

SOHO 4 | 1,309 SQ FT

PLOT CONCEPT



For more information contact:

Tabi Lam

New Home Consultant

P: 403.454.6556

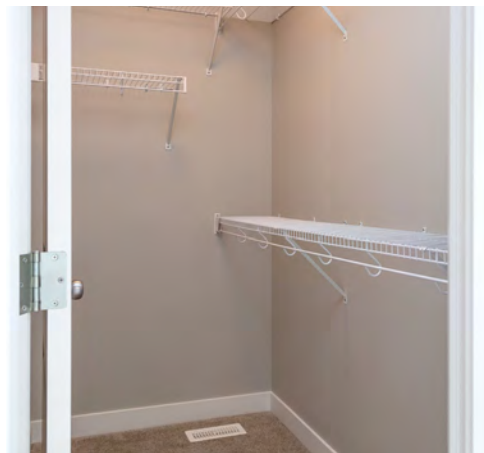
E: tabi.lam@cardelhomes.com

September 2019 | Actual plan may vary from brochure. Square footage is calculated using local Home Builder Association guidelines. Resident Measurement Standard square footage is 600 (main); 602 (upper) for 1,202 total. This plan is published by Cardel Homes. Dimensions and square footage shown are approximate and subject to change without notice. All rights reserved including the rights of reproduction in whole or part without permission of Publisher E.&O.E. Note: Elevation details are community-specific and are artistic representation only. Please ask your sales representative for further information.

**CARDEL
HOMES**

REALLY WELL BUILT

INTERIOR



SAVANNA
IN SADDLE RIDGE

SOHO 4
9128 52 STREET NE

CARDEL
HOMES