

# Quick Possession



MODERN A2

MONTAGE - A2

93 RIDELL STREET (LOT 102)  
**MOVE IN SEPTEMBER 2019**

**\$502,774** | **2,048** <sup>SQ</sup> <sub>FT</sub>

**3 BED +  
BONUS ROOM  
2.5 BATH**

**2ND FLOOR  
BONUS ROOM**

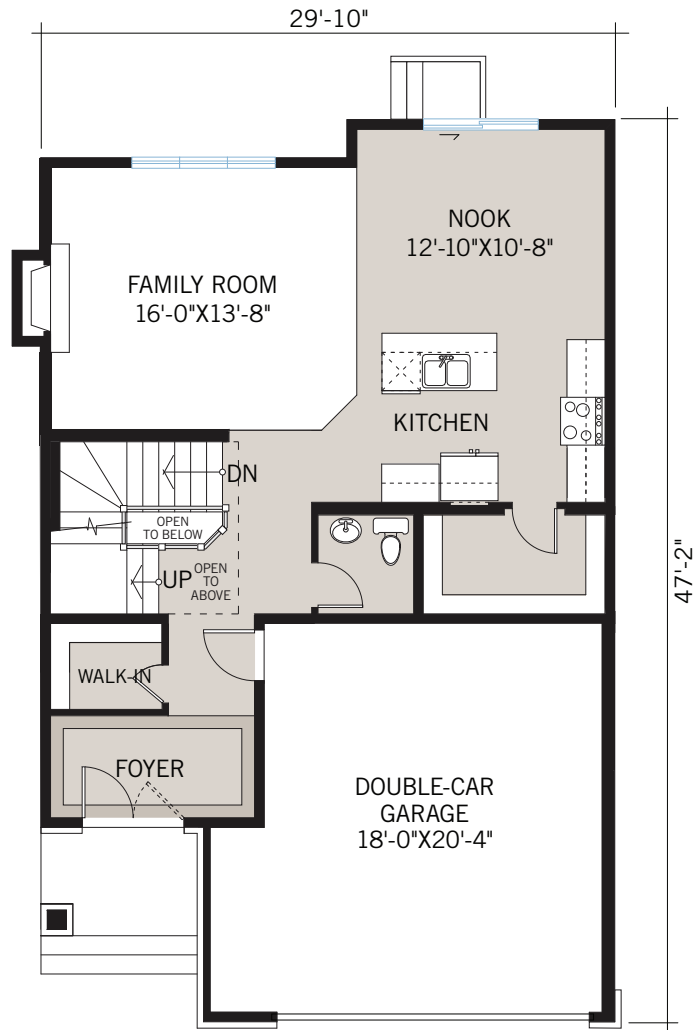
**SPACIOUS  
KITCHEN WITH  
OVERSIZED PANTRY**

**OPEN CONCEPT  
MAIN FLOOR**

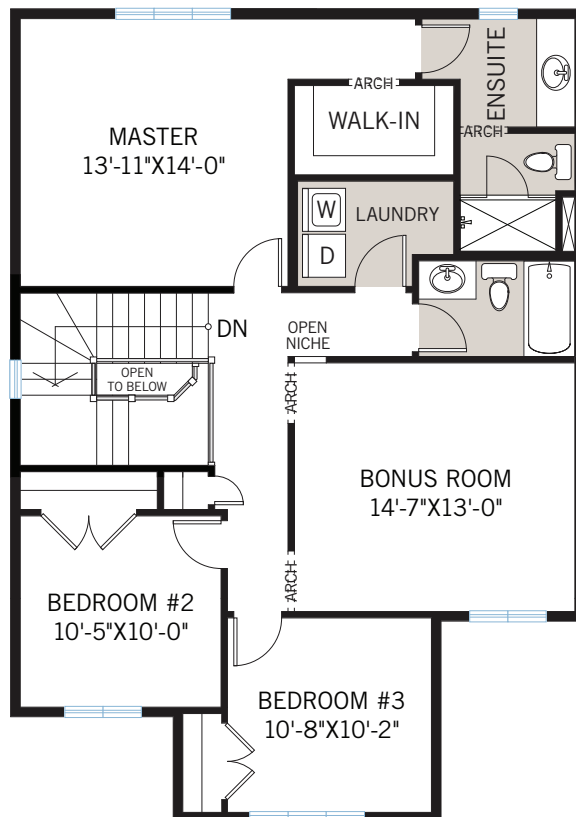
**MILLER'S  
CROSSING**

**LYNNE FREITAG**  
COMMUNITY SALES CONSULTANT  
LYNNE.FREITAG@CARDELHOMES.COM  
P: 613.253.1959  
2 FLEGG WAY, CARLETON PLACE

**CARDEL  
HOMES**

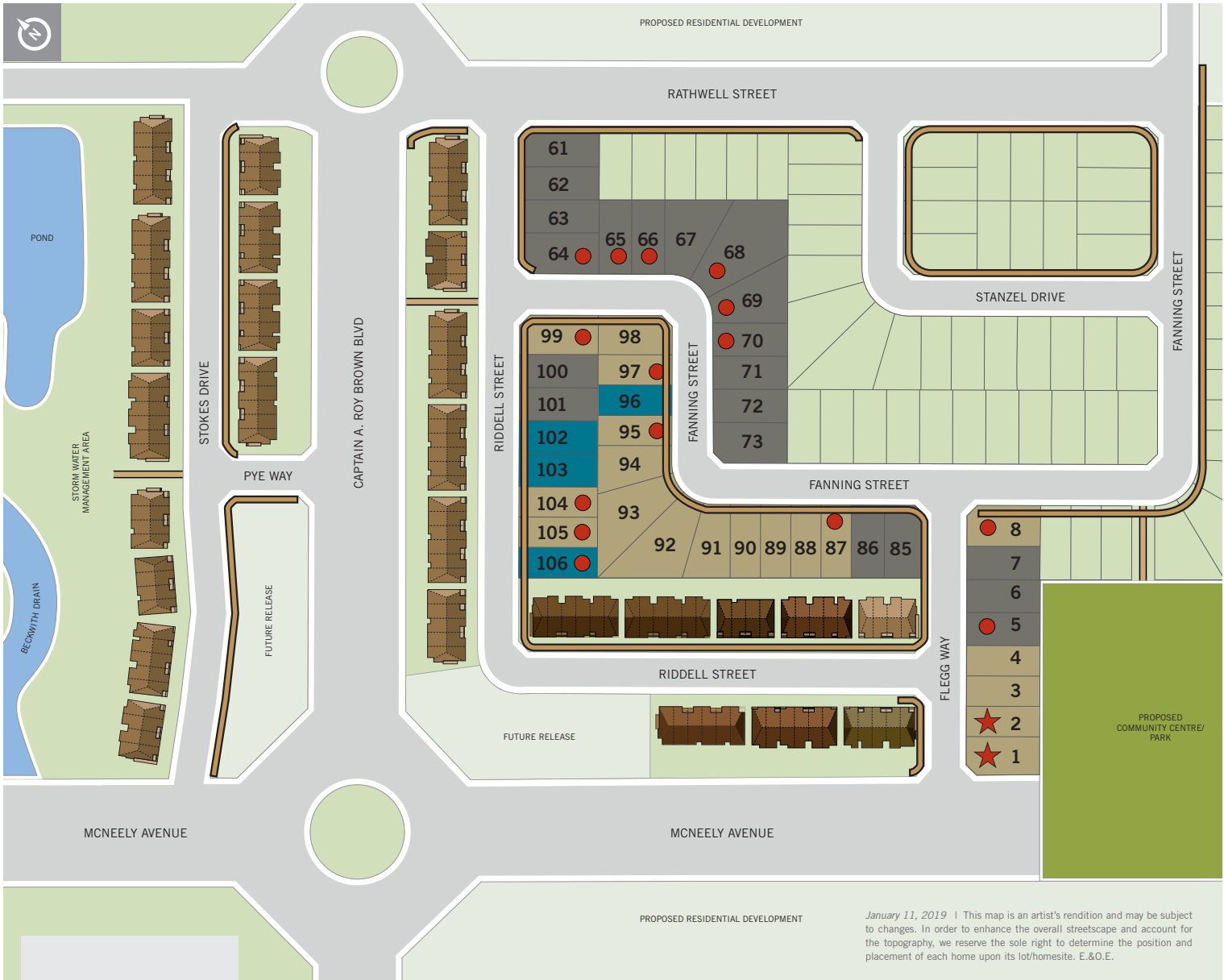


FOR MORE INFORMATION CONTACT: **Lynne Freitag** Community Sales Consultant  
lynne.freitag@cardelhomes.com | P: 613.253.1959 | 2 Flegg Way, Carleton Place



- Spacious kitchen with enlarged walk-in pantry
- Gas fireplace in family room
- 6' 10mm glass shower in ensuite
- Open-to-below staircase to basement
- 3-piece basement rough-in with enlarged basement window
- Energy Star certified with wifi programmable thermostat
- Completed structural selections

PHASE 1 - SINGLE FAMILY



- AVAILABLE 43' LOTS
- AVAILABLE 47' LOTS
- QUICK POSSESSIONS
- SOLD
- CARDEL TOWNHOMES

# Quick Possessions!

Please ask a sales consultant for pricing.

LOT 96 – MOVE-IN READY	
<b>LANCASTER</b>	<b>A1</b>
1,678 SQ FT   3 BED   2.5 BATH	

LOT 102 – SEPT 2019	
<b>MONTAGE</b>	<b>A2</b>
2,048 SQ FT   3 BED   2.5 BATH	

LOT 103 – MARCH 2019	
<b>CAMERON</b>	<b>A1</b>
1,535 SQ FT   2 BED   2 BATH	

**Built for real life.**  
CARDELHOMES.COM

February 1, 2019 | Actual plan may vary from brochure. Square footage is calculated using local Home Builder Association guidelines. This plan is published by Cardel Homes. Dimensions and square footage shown are approximate and subject to change without notice. Mechanical bulkheads may be required and are not shown. All rights reserved including the rights of reproduction in whole or part without permission of Publisher E.&O.E. Note: Elevation details are community-specific, and rendering is artist concept. Please ask your sales representative for further information.

