

Quick Possession



ALDER 2

WALDEN

887 WALGROVE BLVD SE

\$439,900

1,408 ^{SQ}_{FT}

SHOWHOME
MODEL

3 BEDS
2.5 BATHS

FULLY
FURNISHED

PARTIAL DEVELOPED
BASEMENT



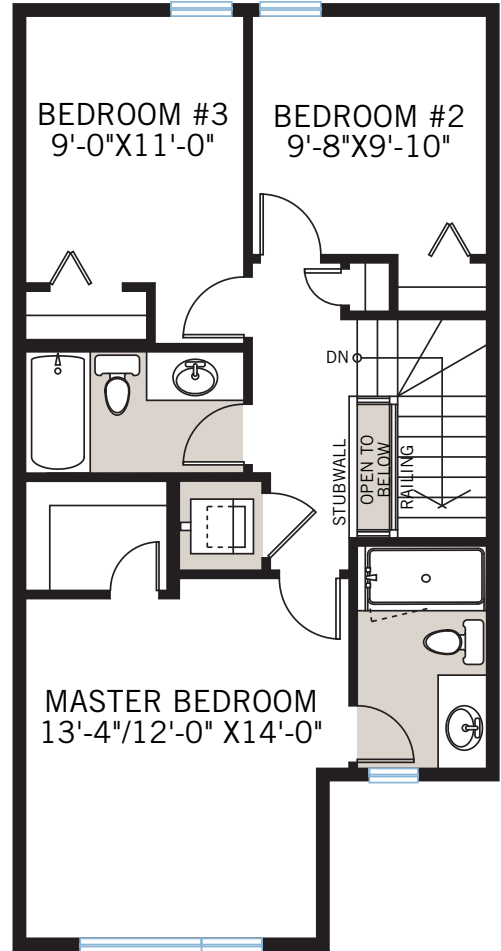
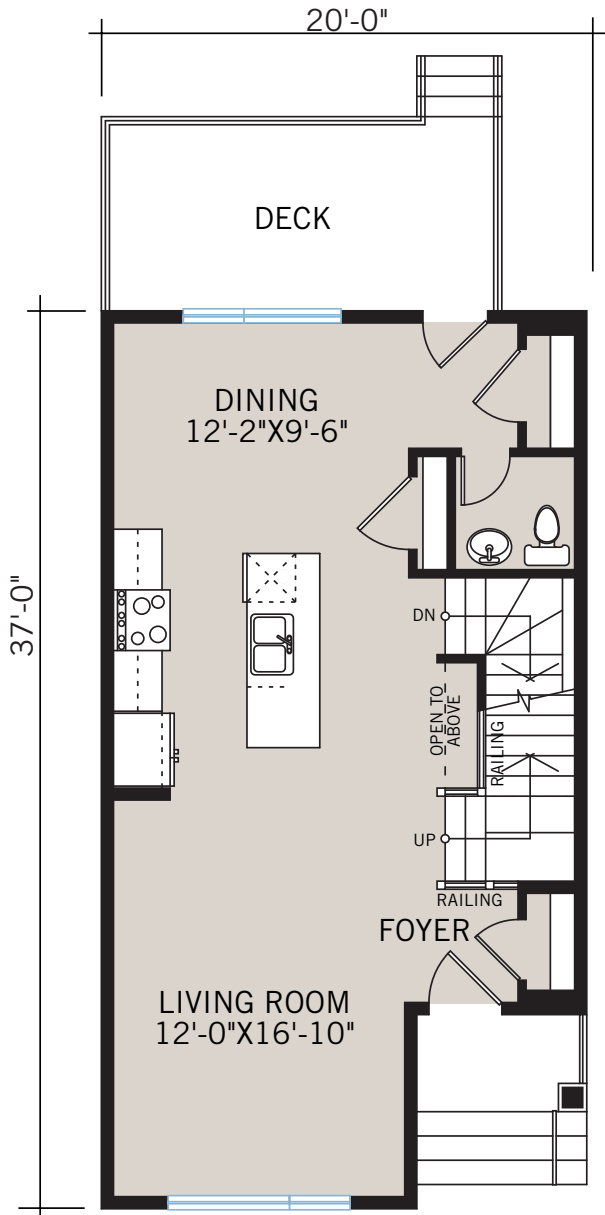
walden

CARDEL
HOMES

FLOORPLAN

MAIN FLOOR | 684 SQ FT

UPPER FLOOR | 724 SQ FT

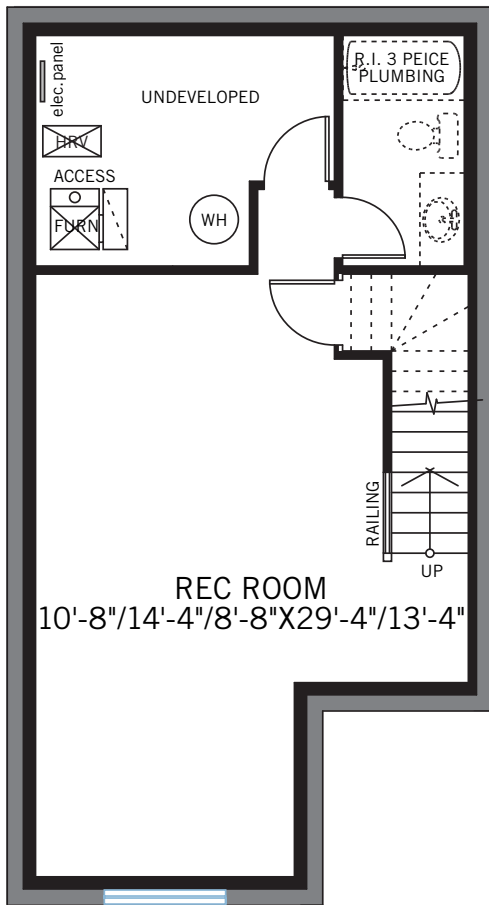


FLOORPLAN

BASEMENT | 439 SQ FT



THE ALDER 2 ELEVATION F1



INCLUDED FEATURES

- Includes furniture, wall coverings, pictures, and accessories. *Does not include mattresses.*
- 9' main floor ceilings
- Developed basement with recreation room
- Dual glazed Low-e windows
- Custom Huntwood brand cabinetry package including:
 - Solid maple doors and drawers
 - Soft close hardware
 - Dovetail drawer construction
 - Premium hardware
 - Colonial white lacquer color
- Premium level quartz countertops
- Premium level kitchen backsplash
- Nook tile feature wall
- Upgraded Kitchen Faucet
- Upgraded Stainless steel appliance package
- Premium level engineered hardwood flooring
- Upgraded carpet
- Upgraded railing
- Premium wall tile package
- Upgraded ensuite shower
- Moen plumbing faucets and fixtures
- Gas line rough in for stove
- Gas line rough in to deck
- Upgraded pot lighting
- Upgraded light fixtures
- Heat recovery ventilation system
- Security system
- Air conditioning
- High Efficiency Furnace
- Exposed aggregate front sidewalk
- Rear deck
- Fully landscaped lot