

---

# THE MENSA 2

---



MODERN PRAIRIE F2



EICHLER F1



1,871 SQ FT  
3 BED 2.5 BATH

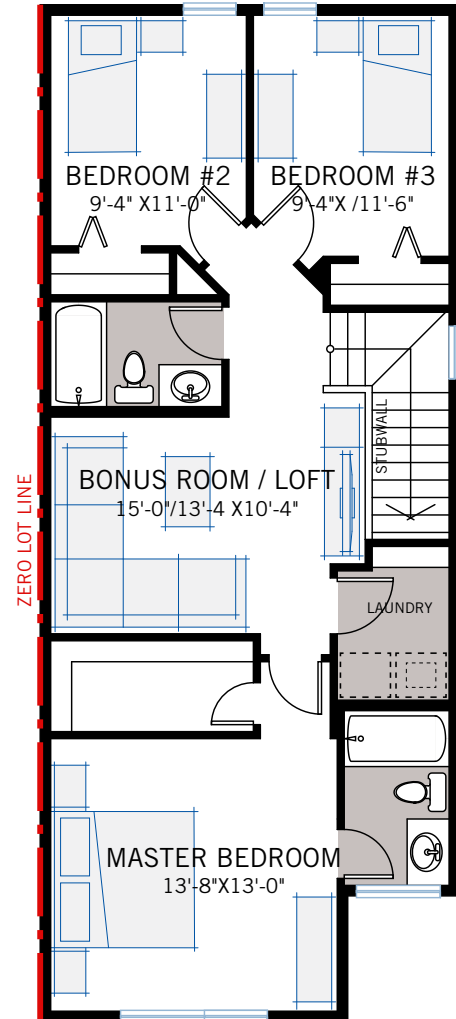
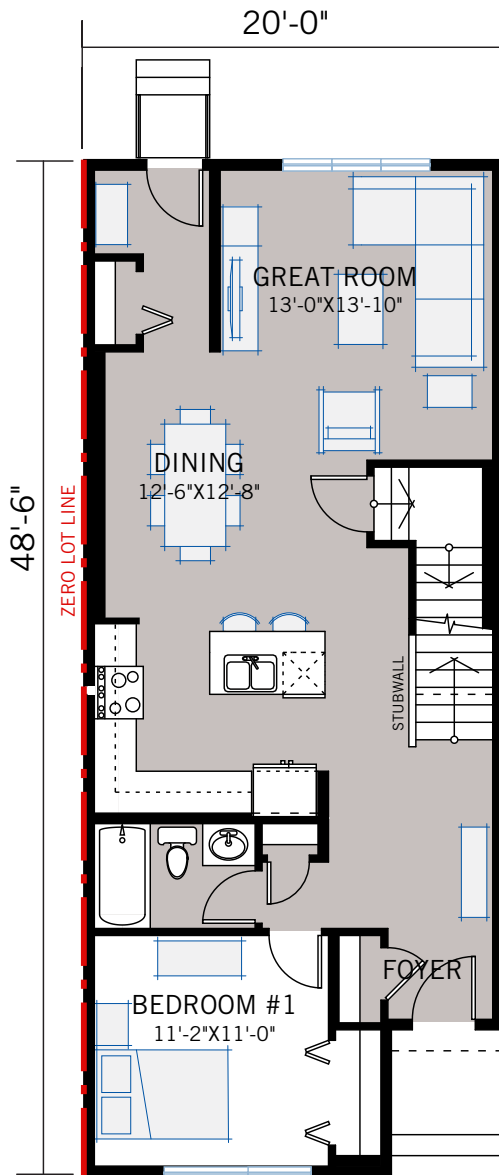
CARDEL  
HOMES

MAIN FLOOR

933 SQ FT

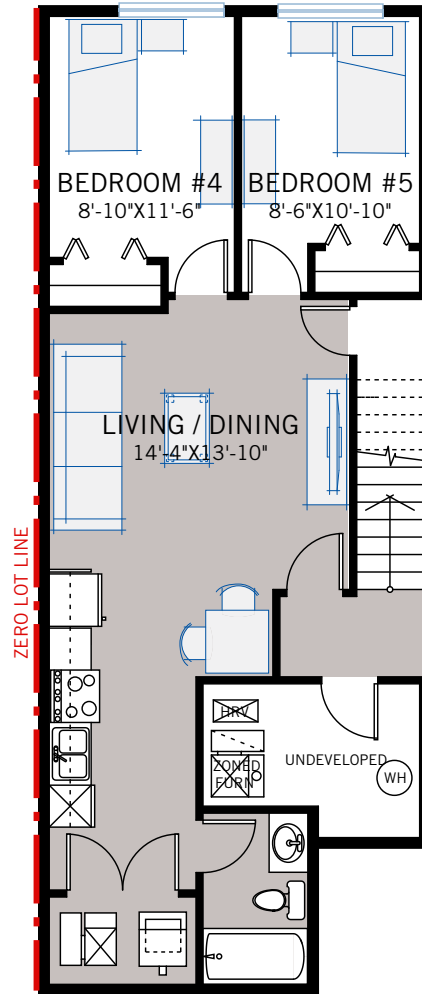
UPPER FLOOR

938 SQ FT



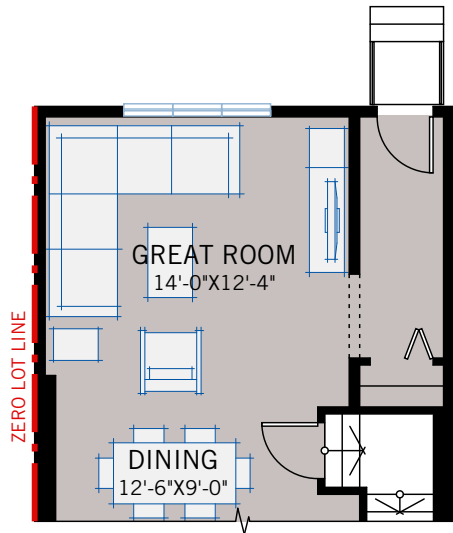
WALDEN

THE MENSA 2 | 1,871 SQ FT

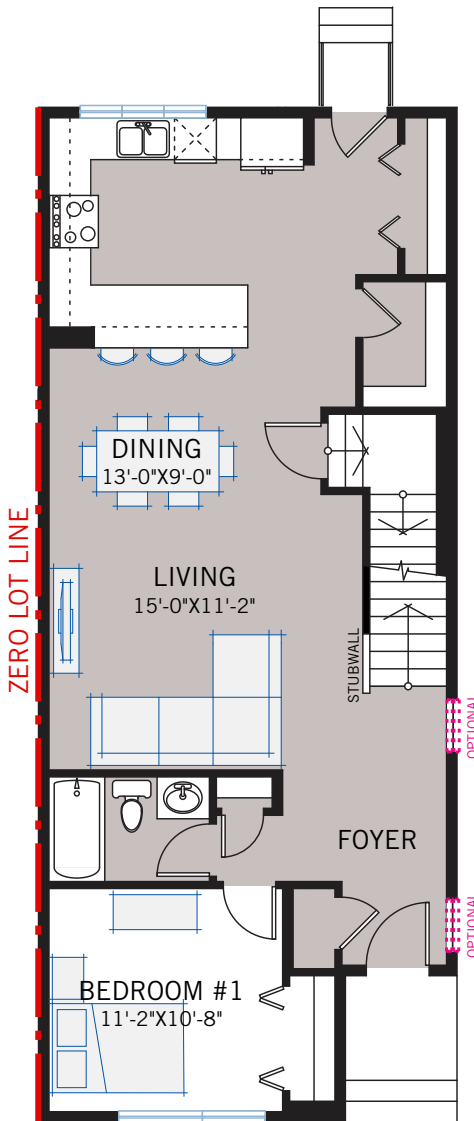


CONCEPTUAL BASEMENT SUITE

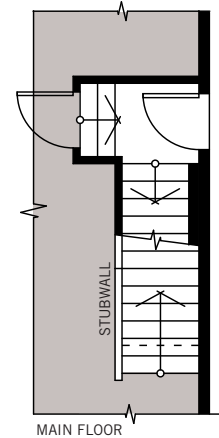
FLOORPLAN OPTIONS



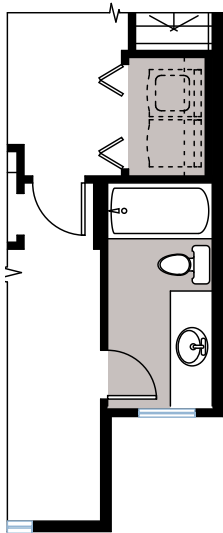
**OPTION #17A**  
 Alternate Main Floor  
 - no additional sq ft  
 - rear entry flipped to right side of house



**OPTION #17B**  
 Alternate Main Floor Layout Alternate Rear Entry  
 - no additional sq ft  
 - rear entry flipped to right side of house  
 - kitchen relocated to back of house



**OPTION #90A**  
 Exterior Side Entry To Basement  
 - subject to site specific lot grading  
 - additional cost at purchasers expense



**OPTION #10A**  
 Alternate Ensuite  
 - 3 additional sq ft  
 - Ensuite increased for larger vanity  
 - Laundry room revised