

# Quick Possession



INDIGO 1

SAVANNA  
9084 52 STREET NE

**\$379,900**

**1,529** SQ  
FT

3 BEDS  
2.5 BATHS

STAINLESS STEEL  
APPLIANCES

MOVE IN  
JUN 2019

FRONT LANDSCAPING  
INCLUDED

SAVANNA  
IN SADDLE RIDGE

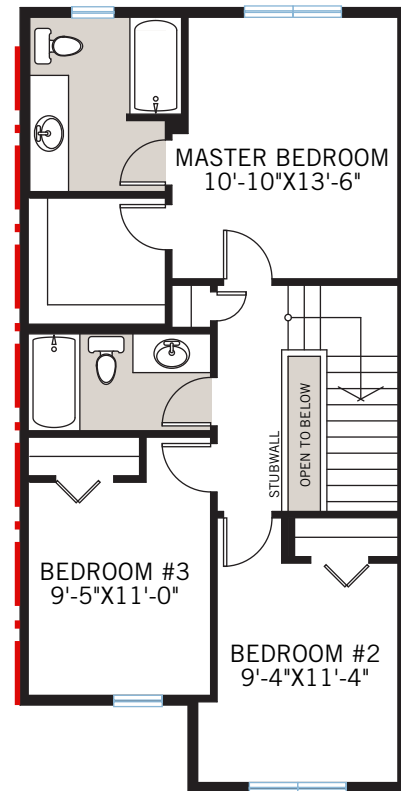
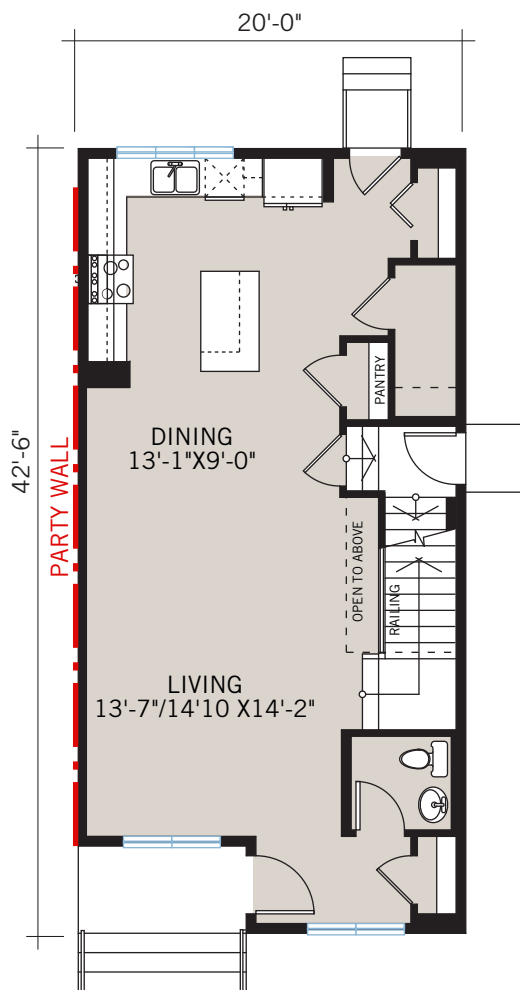
INDIGO 1  
1,529 SQ FT

CARDEL  
HOMES

# FLOORPLAN

MAIN FLOOR | 771 SQ FT

UPPER FLOOR | 758 SQ FT

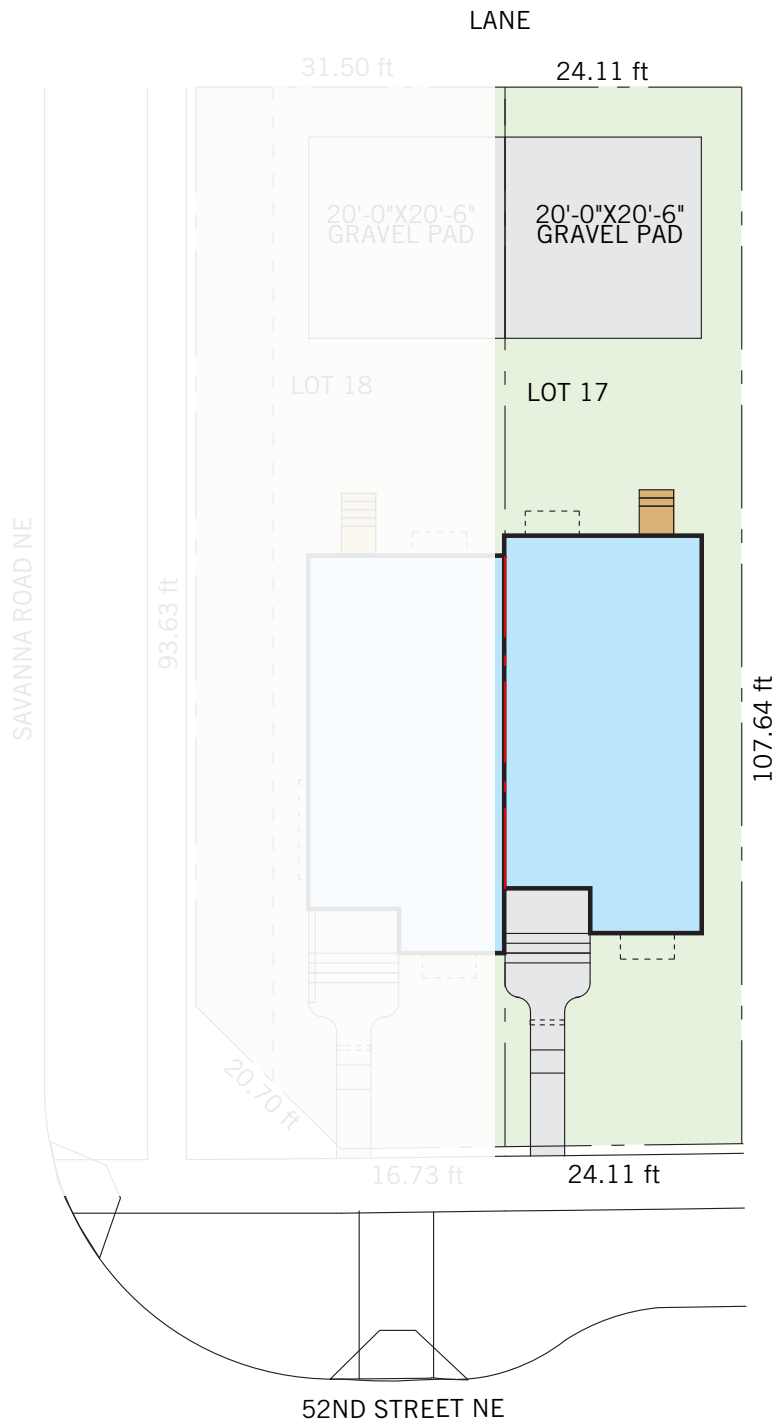


- Luxury vinyl plank flooring on main floor
- Tile flooring in bathrooms
- Stairwell railing
- Quartz countertops throughout
- Custom kitchen design with deep grey lacquered cabinetry
- Main bath and ensuite includes wood cabinets with quartz
- Whirlpool stainless steel appliances
- 9 Ft main floor ceiling
- 9 Ft basement ceilings
- Separate side entrance to basement
- Front yard landscaping with irrigation
- Gasline to deck and range

**SAVANNA**  
IN SADDLE RIDGE

**INDIGO 1 | 1,529 SQ FT**

# PLOT CONCEPT



**For more information contact:**

**Tabi Lam**

New Home Consultant

P: 403.454.6556

E: [tabi.lam@cardelhomes.com](mailto:tabi.lam@cardelhomes.com)

June 2019 | Actual plan may vary from brochure. Square footage is calculated using local Home Builder Association guidelines. Resident Measurement Standard square footage is 000 (main); 000 (upper) for 000 total. This plan is published by Cardel Homes. Dimensions and square footage shown are approximate and subject to change without notice. All rights reserved including the rights of reproduction in whole or part without permission of Publisher E.&O.E. Note: Elevation details are community-specific and are artistic representation only. Please ask your sales representative for further information.

**CARDEL  
HOMES**

REALLY WELL BUILT

INTERIOR



**INDIGO 1**  
9084 52 STREET NE

**CARDEL**  
HOMES