

# Quick Possession



MENSA

WALDEN

891 WALGROVE BLVD SE

**\$449,900**

**1,548** <sup>SQ</sup><sub>FT</sub>

SHOWHOME  
MODEL

3 BEDS  
2.5 BATHS

FULLY  
FURNISHED

DOUBLE DETACHED  
GARAGE

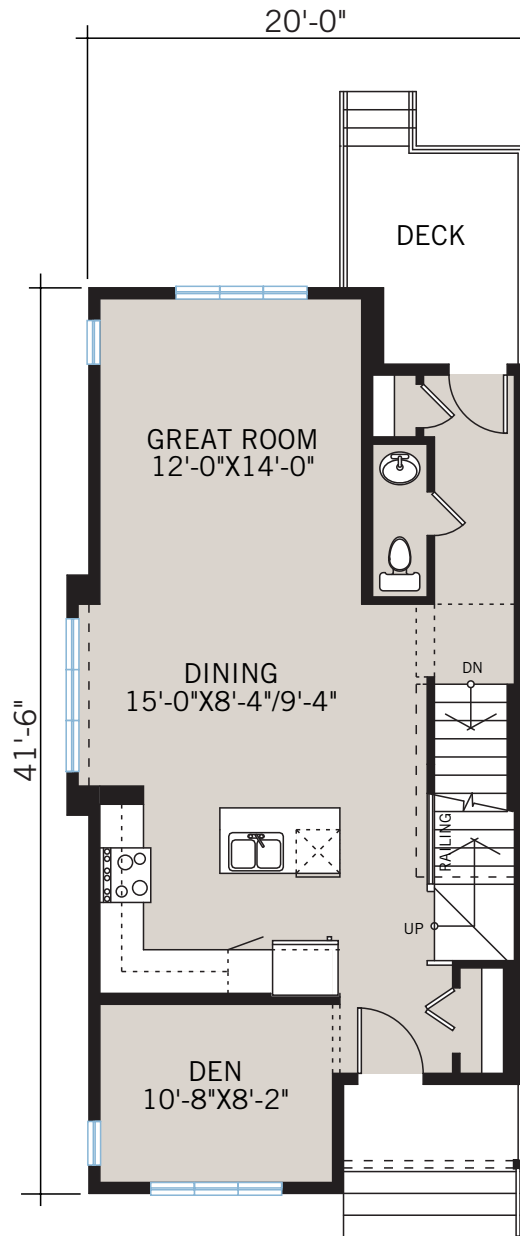


walden

CARDEL  
HOMES

# FLOORPLAN

MAIN FLOOR | 775 SQ FT

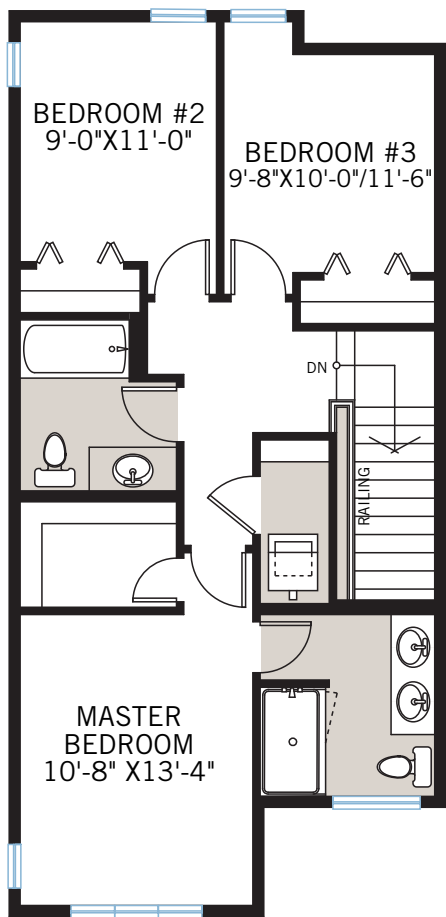


# FLOORPLAN

UPPER FLOOR | 773 SQ FT



THE MENSA ELEVATION F2



---

## INCLUDED FEATURES

---

- Includes furniture, wall coverings, pictures, and accessories. *Does not include mattresses.*
- 9' main floor ceilings
- Double detached garage
- Main floor flex space
- Dual glazed low-e windows
- Custom Huntwood brand cabinetry package including:
  - Solid maple and oak doors and drawers
  - Soft close hardware
  - Dovetail drawer construction
  - Premium hardware
  - Custom lacquer and stain
- Premium level quartz countertops
- Premium level kitchen backsplash
- Upgraded Blanco Performa Kitchen Sink
- Upgraded Delta Kitchen Faucet
- Stainless steel appliance package
- Premium level laminate flooring
- Upgraded railing
- Upgraded smooth interior doors
- Dual ensuite sinks
- Premium wall and floor tile package
- Upgraded tiled ensuite shower
- Upgraded plumbing faucets and fixtures
- Gas line rough in for stove
- Gas line rough in to deck
- Upgraded pot lighting
- Upgraded light fixtures
- Upgraded door hardware
- Upgraded Home Solutions shelving and mirror package
- Heat recovery ventilation system
- Security system
- Air conditioning
- High Efficiency Furnace
- Exposed aggregate front sidewalk
- Rear Deck
- Fully landscaped corner lot