

 Quick Possession



HENLEY

\$851,415

3,939 SQ
FT

5321 OSPREY RIDGE DRIVE (LOT 02, BLOCK 01)

This rendering is an artist's rendition only. Colors and exterior may vary from actual model.

All inclusive with upgrades

- Gourmet kitchen with upgraded gas appliances
- Upgraded cabinetry
- Upgraded carpeting and tile floors
- Upgraded lighting throughout
- Frameless glass shower in master bathroom
- Tray ceilings in den and master bedroom
- Shiplap detail in great room
- Crown molding throughout living areas
- Upgraded landscaping and pool package

Call us at 813-571-7171 for more information.



THE HENLEY

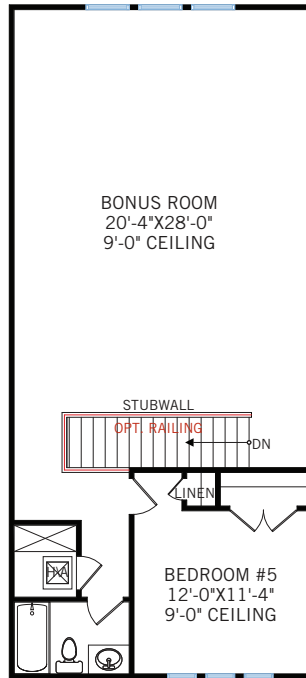
3,939 SQ FT

5 BED + DEN + BONUS, 4 BATH

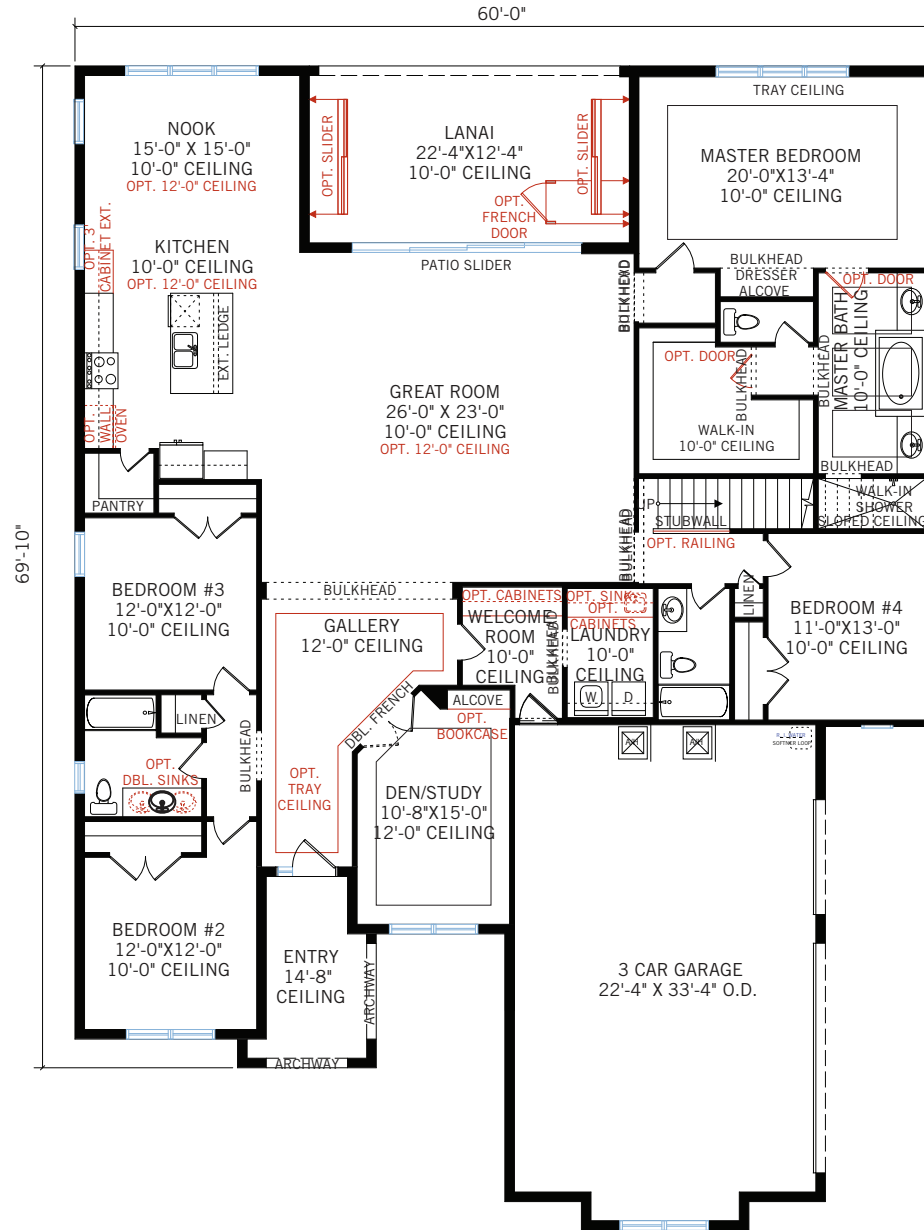
| THE PRESERVE – 80' HOMESITE

CARDEL
HOMES

UPPER FLOOR (939 SQ FT)



MAIN FLOOR (3,939 SQ FT)



MAIN FLOOR	3,939 SQ FT
GARAGE	758 SQ FT
ENTRY	98 SQ FT
LOGIA	275 SQ FT
TOTAL UNDER ROOF	5,070 SQ FT

FISHHAWK RANCH

THE HENLEY | 3,939 SQ FT

CARDELHOMES.COM

CARDEL

June 2019 | Actual plan may vary from brochure. Square footage is calculated using local Home Builder Association guidelines. This plan is published by Cardel Homes. Dimensions and square footage shown are approximate and subject to change without notice. All rights reserved including the rights of reproduction in whole or part without permission of Publisher E.&O.E. Note: Elevation details are community specific. Please ask your new home consultant for further information. CGC 1511592.