

---

# THE PALOMA

---



CANADIANA A1



TRADITIONAL A2



MODERN A3

BLACKSTONE

2,233 SQ FT  
3 BED + BONUS ROOM/4TH BED OPTION  
2.5 BATH

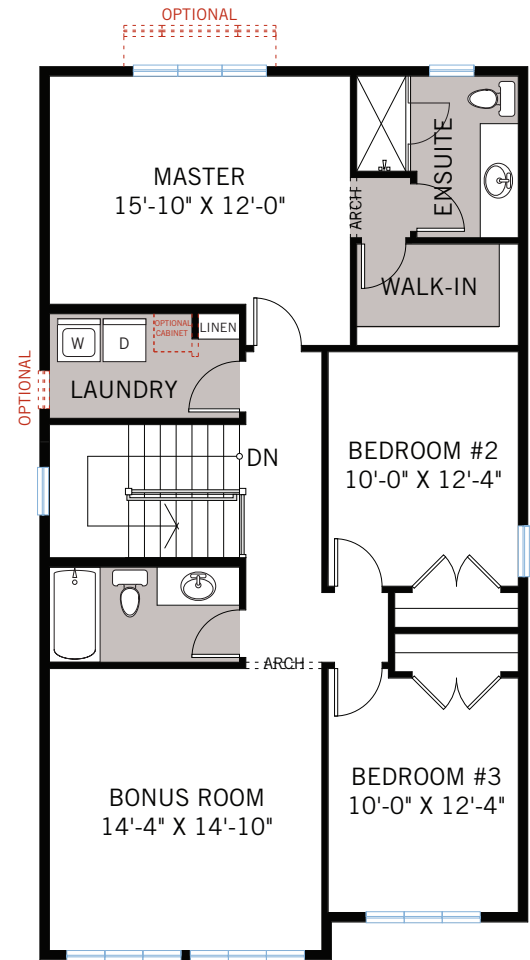
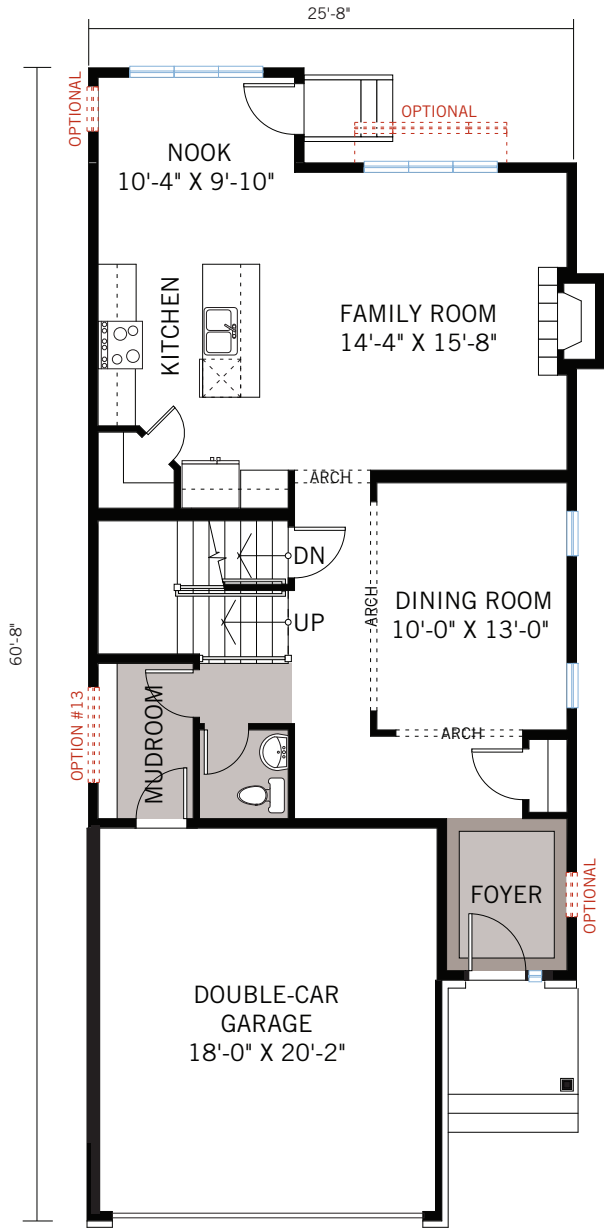
CARDEL  
HOMES

MAIN FLOOR

1,035 SQ FT

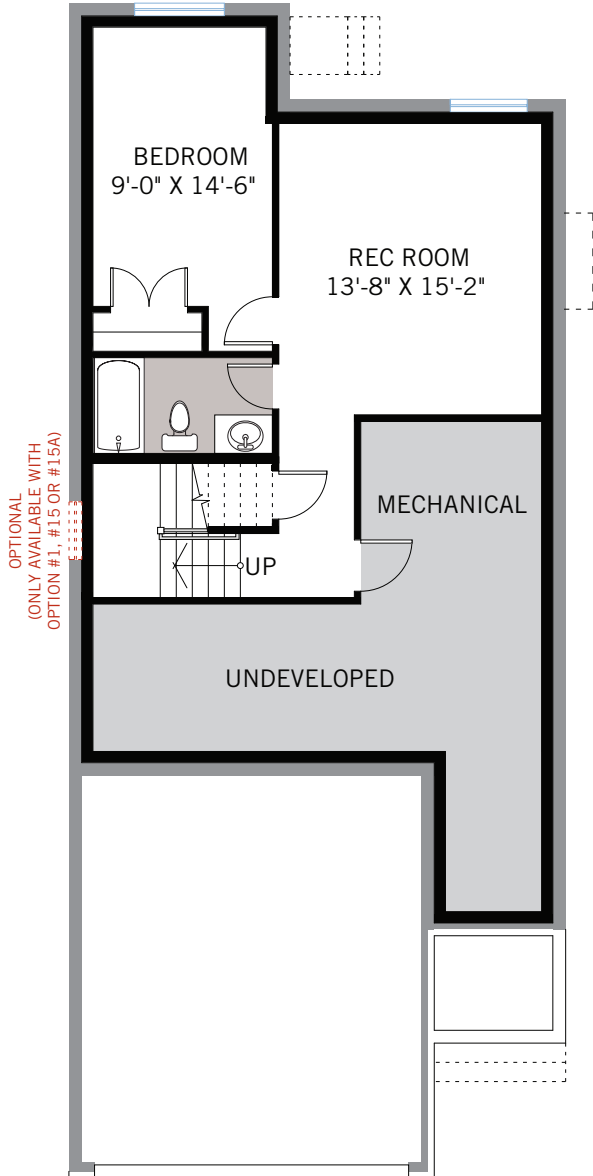
UPPER FLOOR

1,198 SQ FT

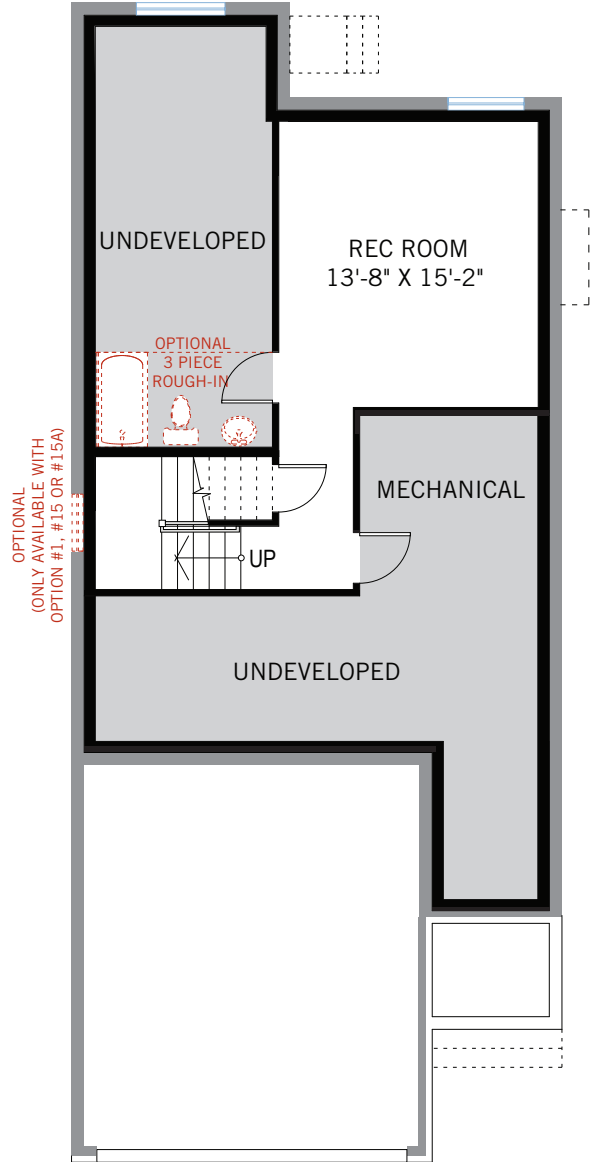


OPTION #10  
9'-0" Upper Floor Ceiling

OPTIONAL DEVELOPED BASEMENT



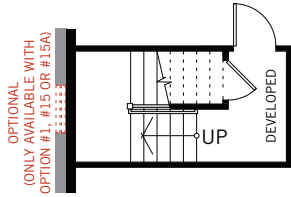
**OPTION #15**  
 Developed Basement  
 - adds 555 sq ft  
 - not available with option #2



**OPTION #15A**  
 Developed Rec Room  
 - adds 302 sq ft

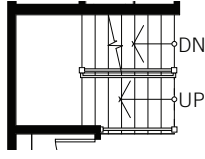
**OPTION #18**  
 9'-0" Basement Ceiling

# FLOORPLAN OPTIONS

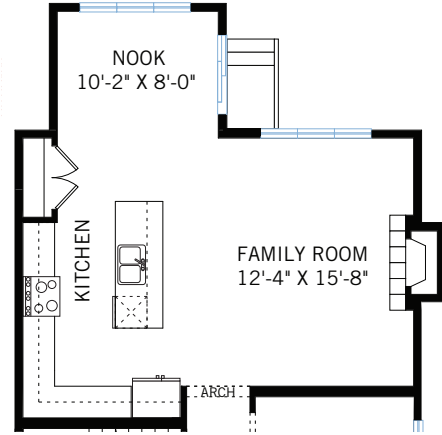


FOUNDATION

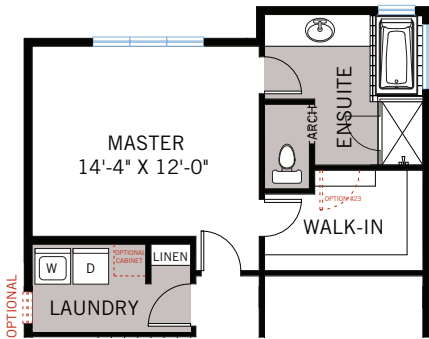
**OPTION #1**  
Developed Basement Stairs  
- adds 40 sq ft



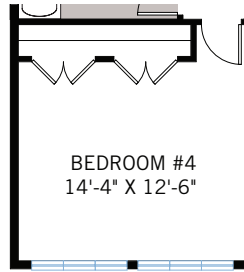
MAIN



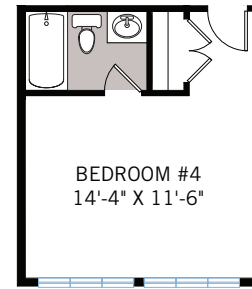
**OPTION #2**  
Alternate Kitchen/Nook  
- adds 22 sq ft  
- not available with option #3 or #15



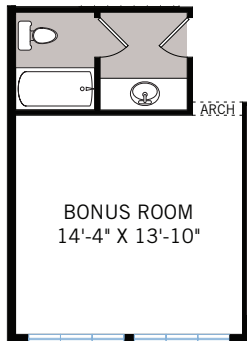
**OPTION #3**  
Alternate Master Ensuite  
- adds 24 sq ft  
- not available with option #2



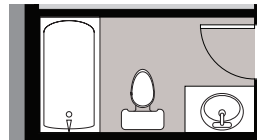
**OPTION #8**  
4th Bedroom



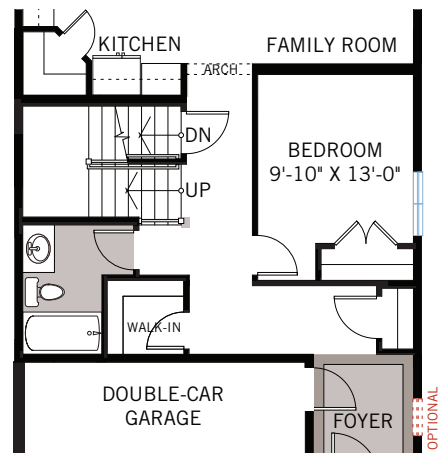
**OPTION #8A**  
4th Bedroom Suite  
- not available with elevation A3  
- adds 30 sq ft



**OPTION #9**  
Jack & Jill Bathroom



**OPTION #15B**  
Developed Basement Bathroom  
- adds 56 sq ft  
- only available with Option #15A



**OPTION #22**  
Main Floor Bedroom and Full Bath  
- not available with Option #13