

Quick Possession



ASTER 1

CORNERBROOK
244 CORNERBROOK COMMON NE

2,659 ^{SQ}
^{FT}

**5 BEDS
3.5 BATHS**

**DUAL MASTER
SUITES**

**MOVE IN
SEP 2020**

SHOWHOME



CORNERBROOK

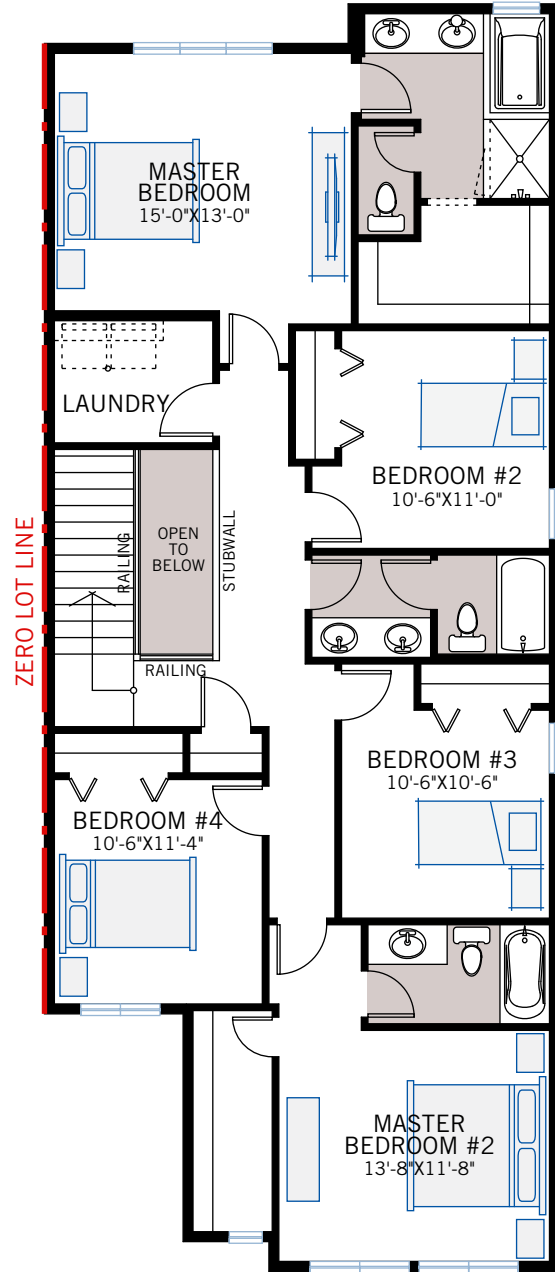
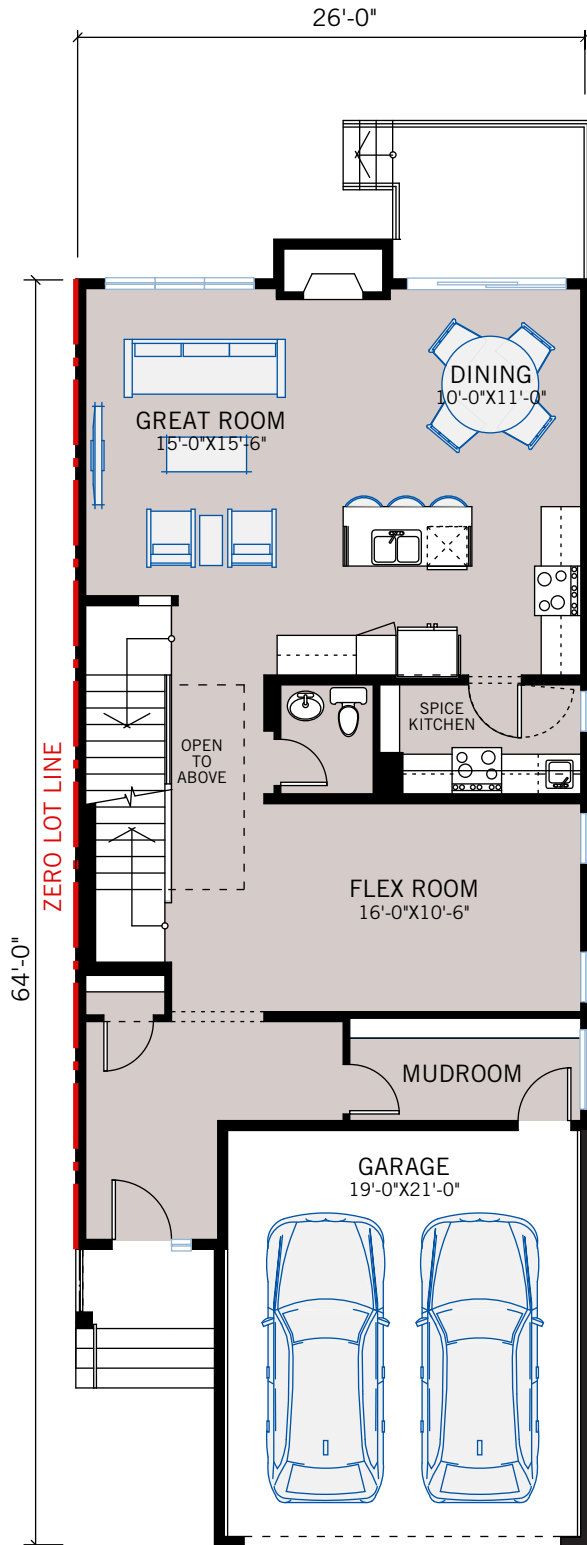
2,659 SQ FT
5 BED 3.5 BATH
244 CORNERBROOK COMMON NE

**CARDEL
HOMES**

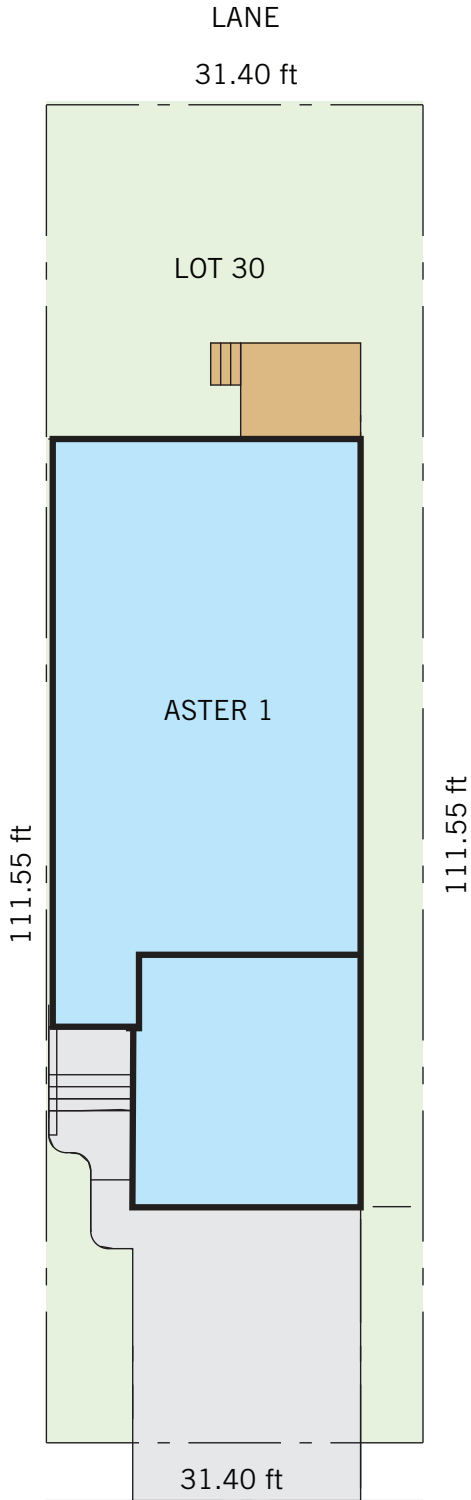
FLOORPLAN

MAIN FLOOR | 1,164 SQ FT

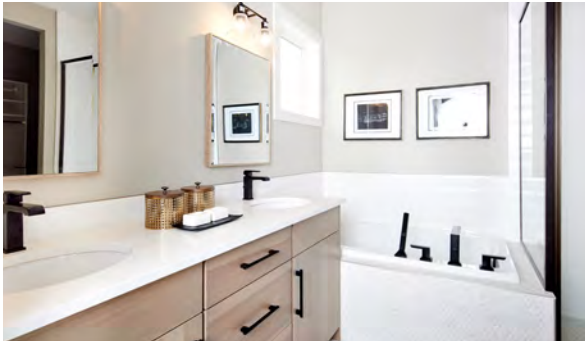
UPPER FLOOR | 1,495 SQ FT



PLOT CONCEPT



THE ASTER 1



CORNERBROOK COMMON NE

August 2020 | Actual plan may vary from brochure. Square footage is calculated using local Home Builder Association guidelines. Construction footage 873 (main), 1,099 (upper) for 1,972 total. This plan is published by Cardel Homes. Dimensions and square footage shown are approximate and subject to change without notice. All rights reserved including the rights of reproduction in whole or part without permission of Publisher E.&O.E. Note: Elevation details are community-specific. Please ask your sales representative for further information.

INCLUDED FEATURES

- Developed Basement Stairwell
- Dual master suites
- 5 bedrooms and 3.5 bathrooms
- 9' main floor and upper floor ceilings
- Triple glazed Low E window package
- Spice Kitchen
- Custom Huntwood brand cabinetry package including:
 - Two tone kitchen with Solid Hickory doors and drawers in Oasis stain and maple with vintage black
 - Solid Hickory with Oasis stain in bathrooms
 - Soft close hardware
 - Dovetail drawer construction
 - Premium hardware
- Premium level quartz countertops throughout
- Gas line rough-in to kitchen
- Upgraded Delta kitchen faucet
- Upgraded Blanco Ikon undermount sink in black
- Premium level Kitchen Air Appliance package in Black Stainless
- Premium level kitchen backsplash
- Upgraded Custom fireplace detail with upgraded tile and pine detail
- Premium laminate flooring throughout main floor
- Upgraded carpet throughout
- Upgraded passage doors and hardware throughout
- Upgraded wrought iron railing
- Window coverings
- Premium wall tile package
- Premium floor tile package
- Dual ensuite sinks in master bedroom 1
- Upgraded plumbing fixtures throughout
- Upgraded Laundry room counter
- Whirlpool front load washer and dryer
- Upgraded pot lighting
- Upgraded light fixtures
- Heat recovery ventilation system
- Cardel's premium spray foam attic insulation assembly
- Security system
- Air conditioning
- Gas line - Rough In to Deck
- Fully landscaped lot with deck
- Exposed aggregate sidewalk and driveway
- Slab heating in garage