

# Quick Possession



EVO 2

CORNERBROOK  
95 CORNERBROOK COMMON NE

**1,930** <sup>SQ</sup>  
<sub>FT</sub>

**3 BEDS  
2.5 BATHS**

**STAINLESS STEEL  
APPLIANCES**

**MOVE IN  
JAN 2021**

**SEPARATE SIDE ENTRY  
TO BASEMENT**



CORNERBROOK

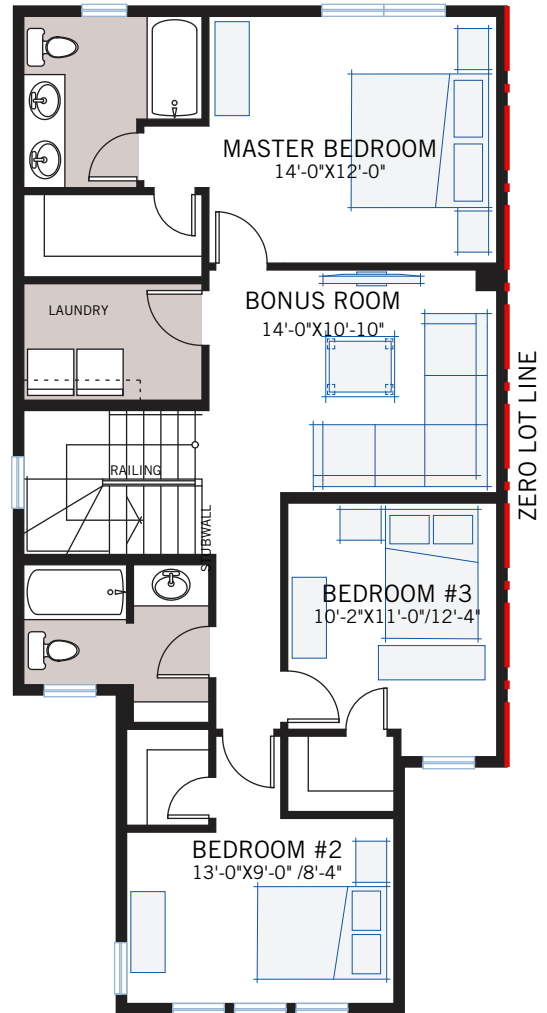
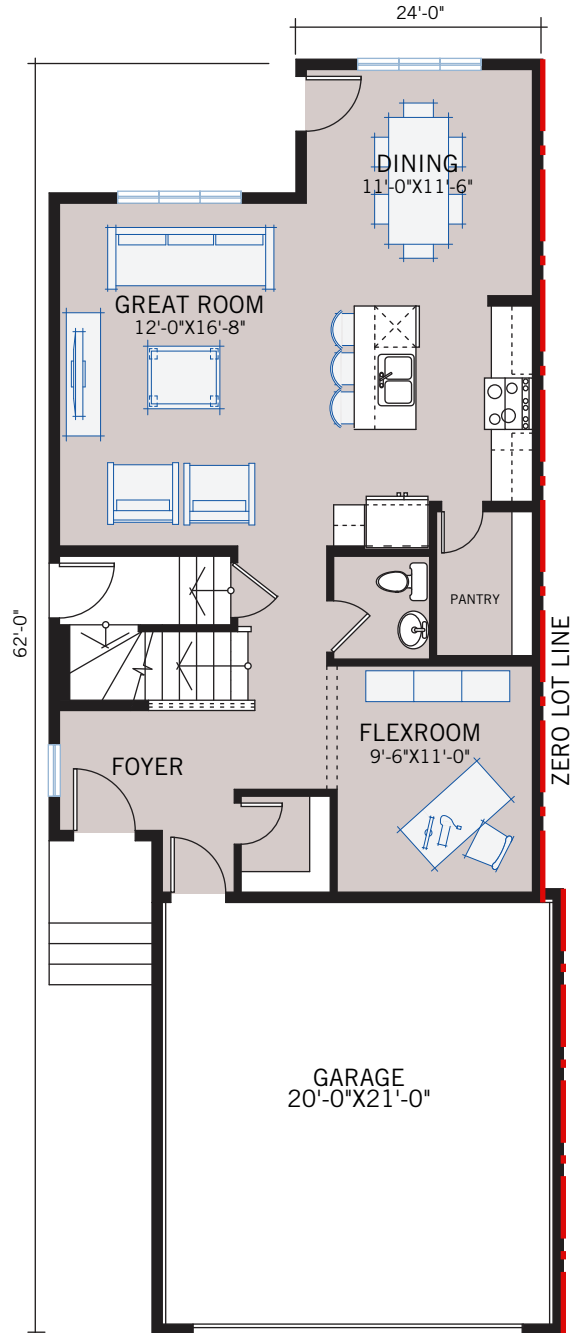
1,930 SQ FT  
3 BED 2.5 BATH  
95 CORNERBROOK COMMON NE

CARDEL  
HOMES

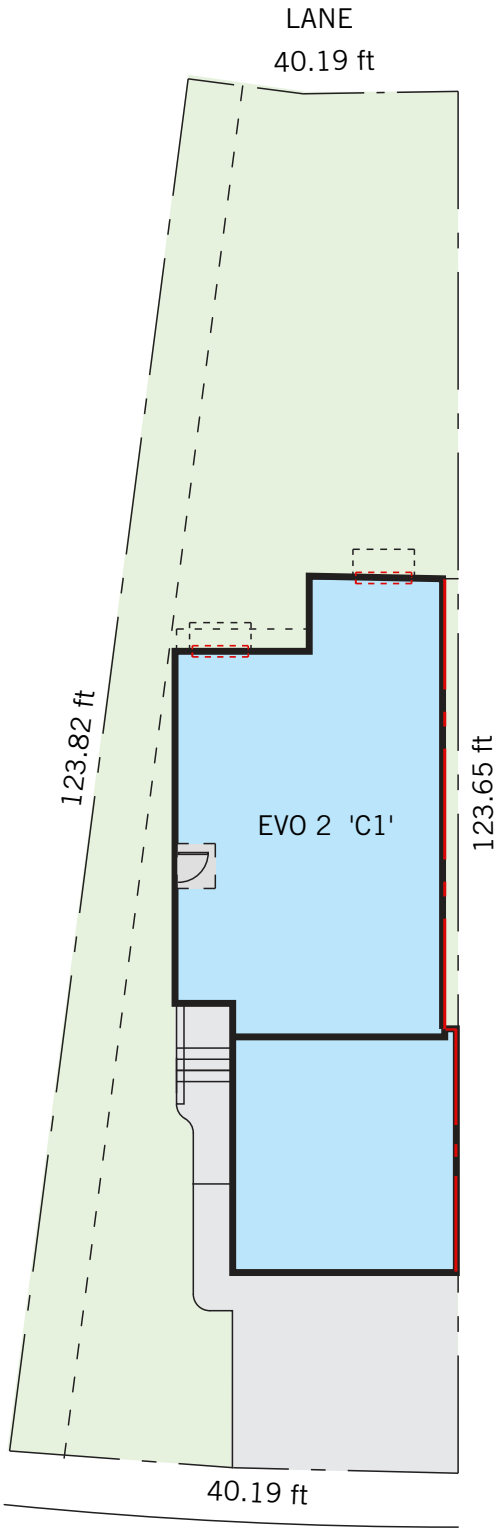
# FLOORPLAN

MAIN FLOOR | 891 SQ FT

UPPER FLOOR | 1,031 SQ FT



# PLOT CONCEPT



CORNERBROOK COMMON NE

October 2020 | Actual plan may vary from brochure. Square footage is calculated using local Home Builder Association guidelines. Construction footage 891 (main), 980 (upper) for 1,871 total. This plan is published by Cardel Homes. Dimensions and square footage shown are approximate and subject to change without notice. All rights reserved including the rights of reproduction in whole or part without permission of Publisher E.&O.E. Note: Elevation details are community-specific. Please ask your sales representative for further information.

---

## INCLUDED FEATURES

---

- Top selling Evo 2 model
- 9' main floor ceiling
- Separate side entry to basement
- Main floor flex room
- Triple glazed low-E window package
- Luxury Vinyl Plank flooring throughout main floor
- Custom cabinetry package including:
  - White MDF Cabinetry
  - Soft close hardware
  - Dovetail drawer construction
  - Premium hardware
- Premium level Whirlpool stainless steel appliances
- Broan Chimney Hoodfan in Kitchen
- Premium level quartz countertops throughout
- Upgraded Moen kitchen faucet
- Premium level kitchen backsplash
- Premium level luxury vinyl plank flooring
- Upgraded railing
- Premium wall tile package
- Moen plumbing faucets and fixtures
- Pot lighting
- Dual ensuite sinks
- Whirlpool front load washer and dryer
- Heat recovery ventilation system
- Cardel's premium spray foam attic insulation assembly
- Rough in gas line to kitchen stove and deck
- Basement plumbing rough-ins for future secondary suite
- 30 year shingles
- Exposed aggregate sidewalk and driveway