

# THE WALDEN



CANADIANA A1



MODERN A3



CANADIANA A2

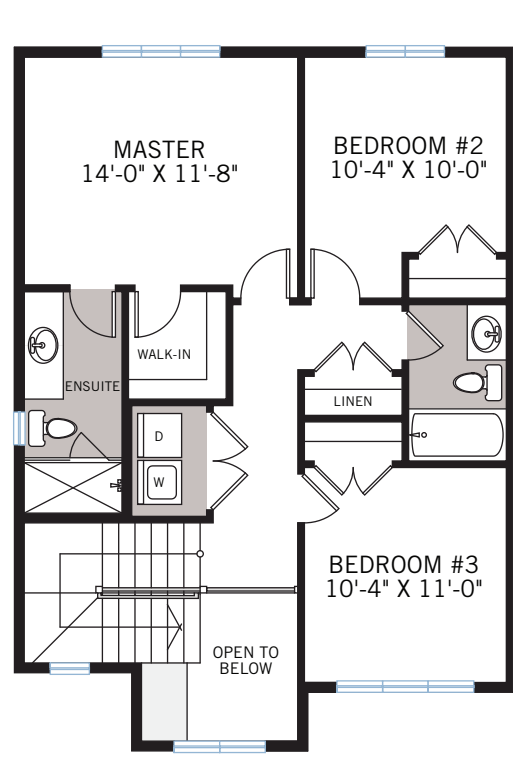
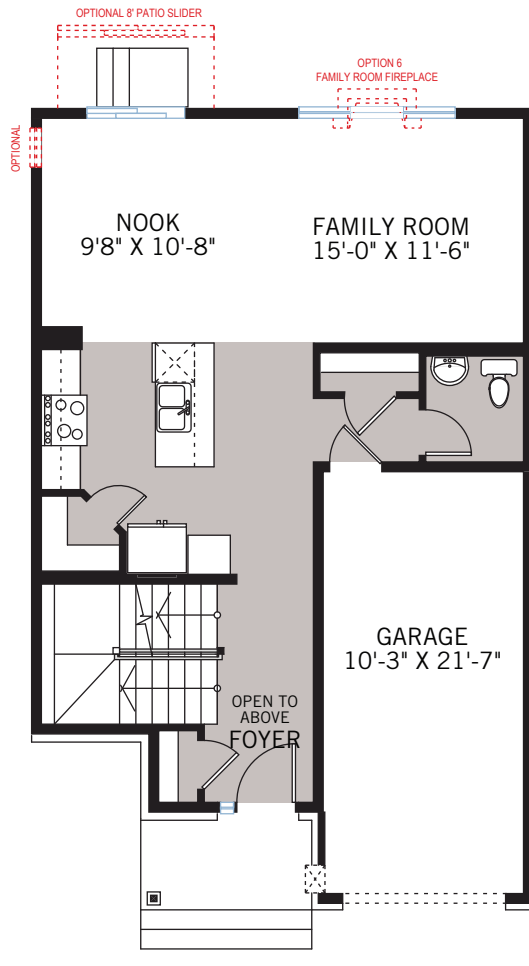


MODERN A4

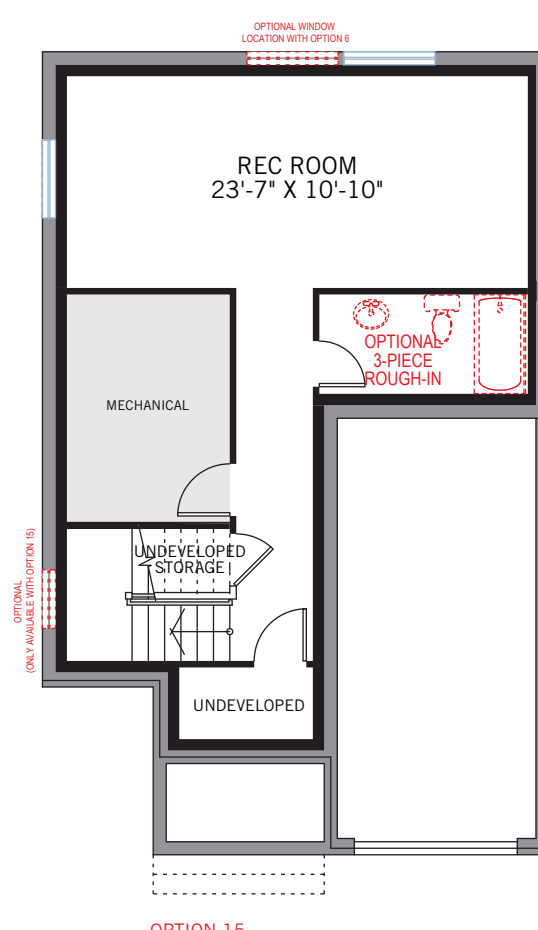
MILLER'S  
CROSSING

1,565 SQ FT  
3 BED  
2.5 BATH

CARDEL  
HOMES

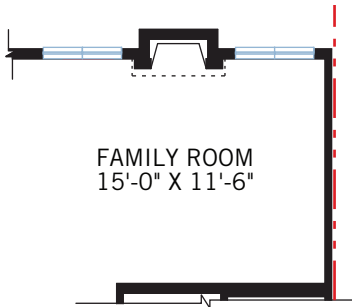


OPTIONAL DEVELOPED BASEMENT

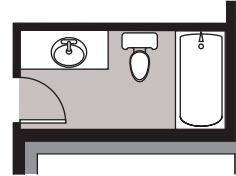


**OPTION 15**  
Developed Basement Rec Room  
- adds 583 sq ft

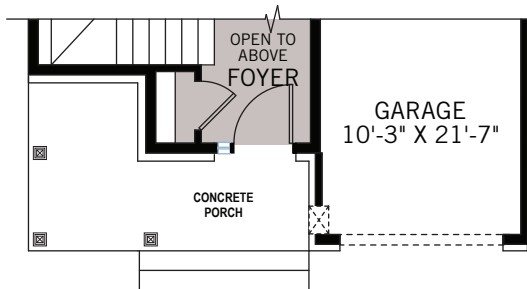
## FLOORPLAN OPTIONS



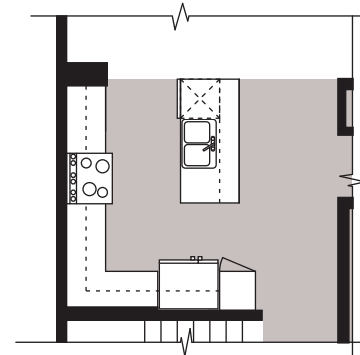
**OPTION 6**  
Rear Great Room Fireplace  
- adds 4 sq ft



**OPTION #15A**  
Developed Basement Bathroom  
- adds 78 sq ft  
- only available with option 15



**OPTION 8**  
Full Porch  
- adds 48 sq ft  
- only available with  
elevation A1 & A2



**OPTION 2**  
Alternate Kitchen