

🕒 Quick Possession



EVO 1

SAVANNA
32 SAVANNA ALLEY NE

2,014^{SQ}
FT

MAIN FLOOR
BEDROOM
AND BATH

9' CEILINGS MAIN
AND BASEMENT

MOVE IN
JUNE 2021

FRONT YARD
LANDSCAPING

SAVANNA
IN SADDLE RIDGE

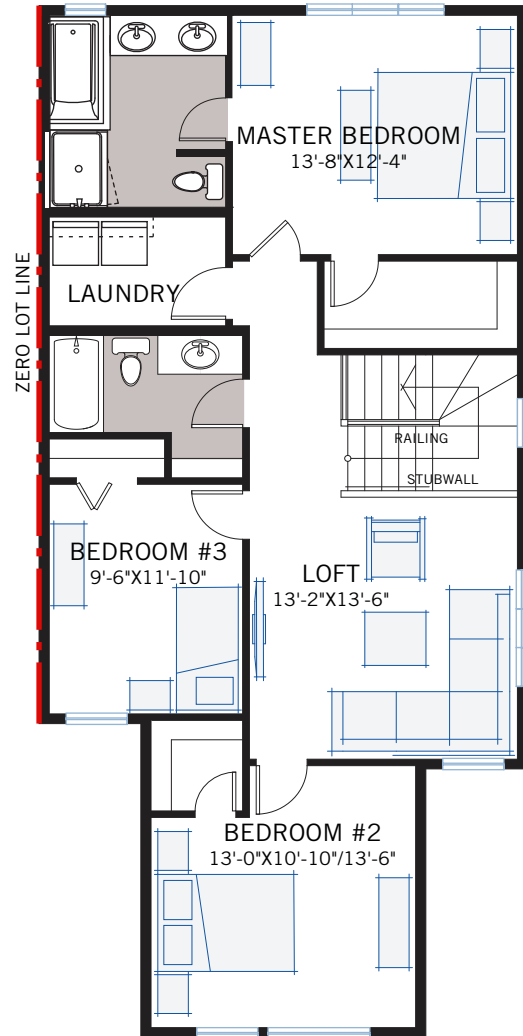
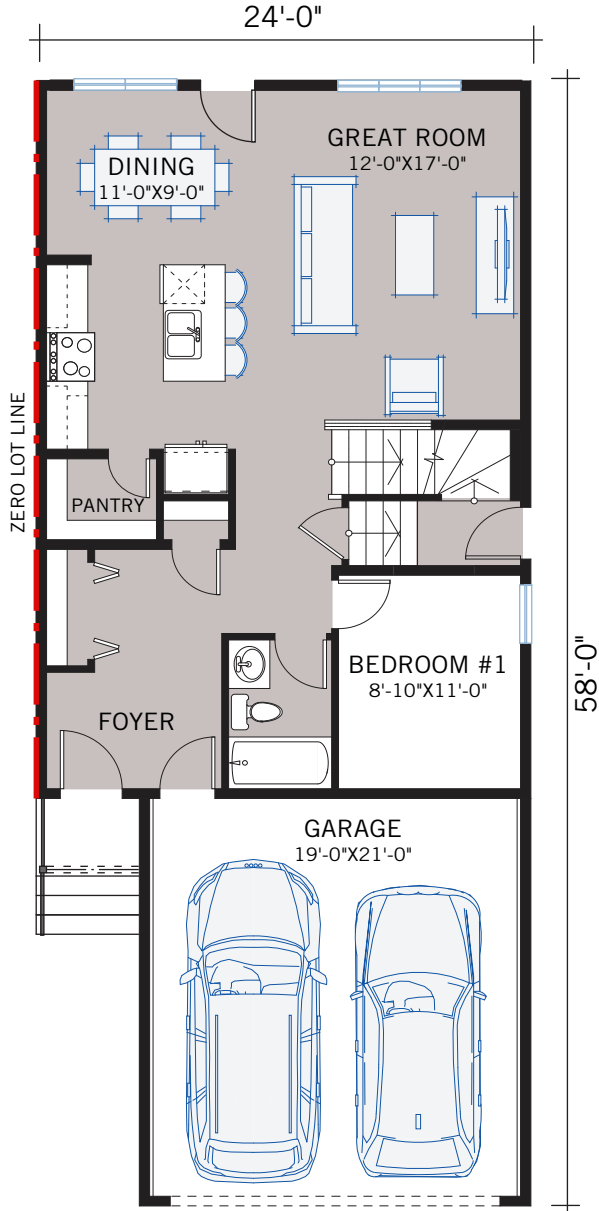
2,014 SQ FT
4 BED 3 BATH
32 SAVANNA ALLEY NE

CARDEL
HOMES

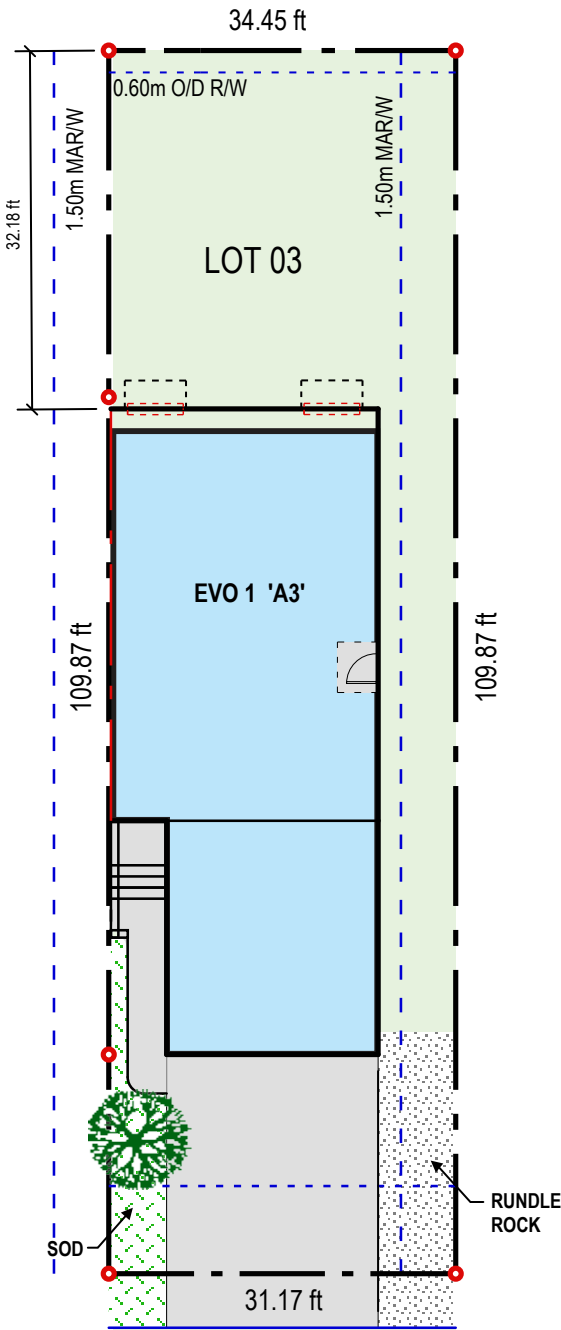
FLOORPLAN

MAIN FLOOR | 888 SQ FT

UPPER FLOOR | 1,126 SQ FT



PLOT CONCEPT



SAVANNA ALLEY NE

April 2021 | Actual plan may vary from brochure. Square footage is calculated using local Home Builder Association guidelines. Construction footage 888 (main), 1,066 (upper) for 1,954 total. This plan is published by Cardel Homes. Dimensions and square footage shown are approximate and subject to change without notice. All rights reserved including the rights of reproduction in whole or part without permission of Publisher E.&O.E. Note: Elevation details are community-specific. Please ask your sales representative for further information.

INCLUDED FEATURES

- Top selling Evo 1 model
- Main floor bedroom and bathroom
- 9' main floor ceiling
- 9' basement ceiling
- Triple glazed low-E window package
- Luxury Vinyl Plank flooring throughout main floor
- Custom cabinetry package including:
 - White MDF Cabinetry
 - Soft close hardware
 - Dovetail drawer construction
 - Premium hardware
- Premium level Whirlpool stainless steel appliances
- Broan Chimney Hoodfan
- Premium level quartz countertops throughout
- Elica Chimney Hoodfan in Kitchen
- Premium level quartz countertops throughout
- Upgraded Moen kitchen faucet
- Premium level kitchen backsplash
- Upgraded railing
- Premium wall tile package
- Moen plumbing faucets and fixtures
- Pot lighting
- Dual ensuite sinks
- Whirlpool front load washer & dryer
- Heat recovery ventilation system
- Cardel's premium spray foam attic insulation assembly
- Rough in gas line to kitchen stove and deck
- 30 year shingles
- Exposed aggregate concrete driveway + sidewalks and driveway