

 Quick Possession



EVO 2

WALDEN
244 WALGROVE HEATH SE

1,819 SQ
FT

3 BEDS
2.5 BATHS

CUSTOM
KITCHEN

MOVE IN
AUG 2021

SHOWHOME



walden

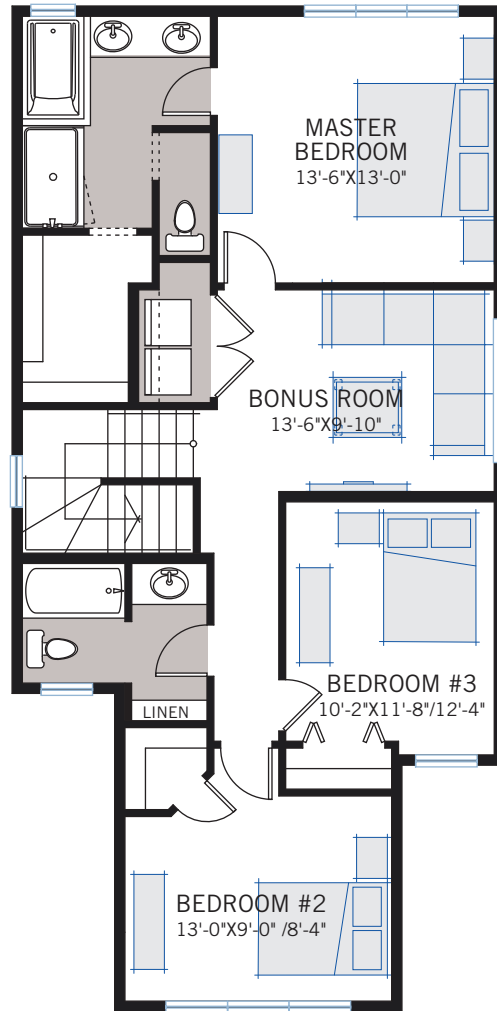
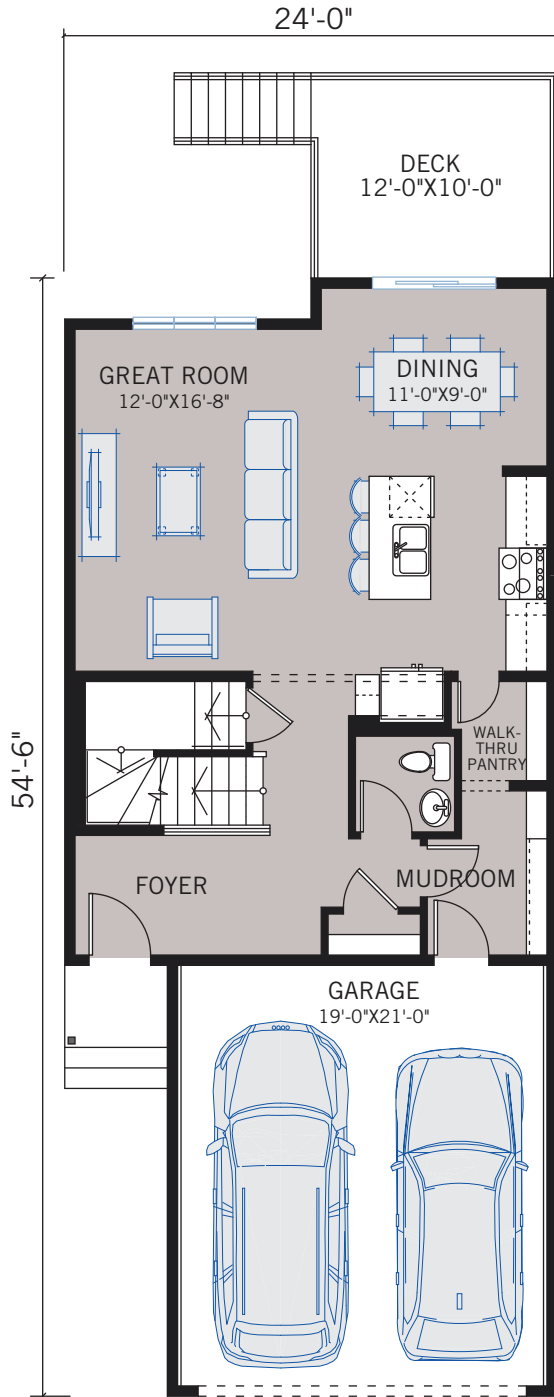
1,819 SQ FT
3 BED 2.5 BATH
244 WALGROVE HEATH SE

CARDEL
HOMES

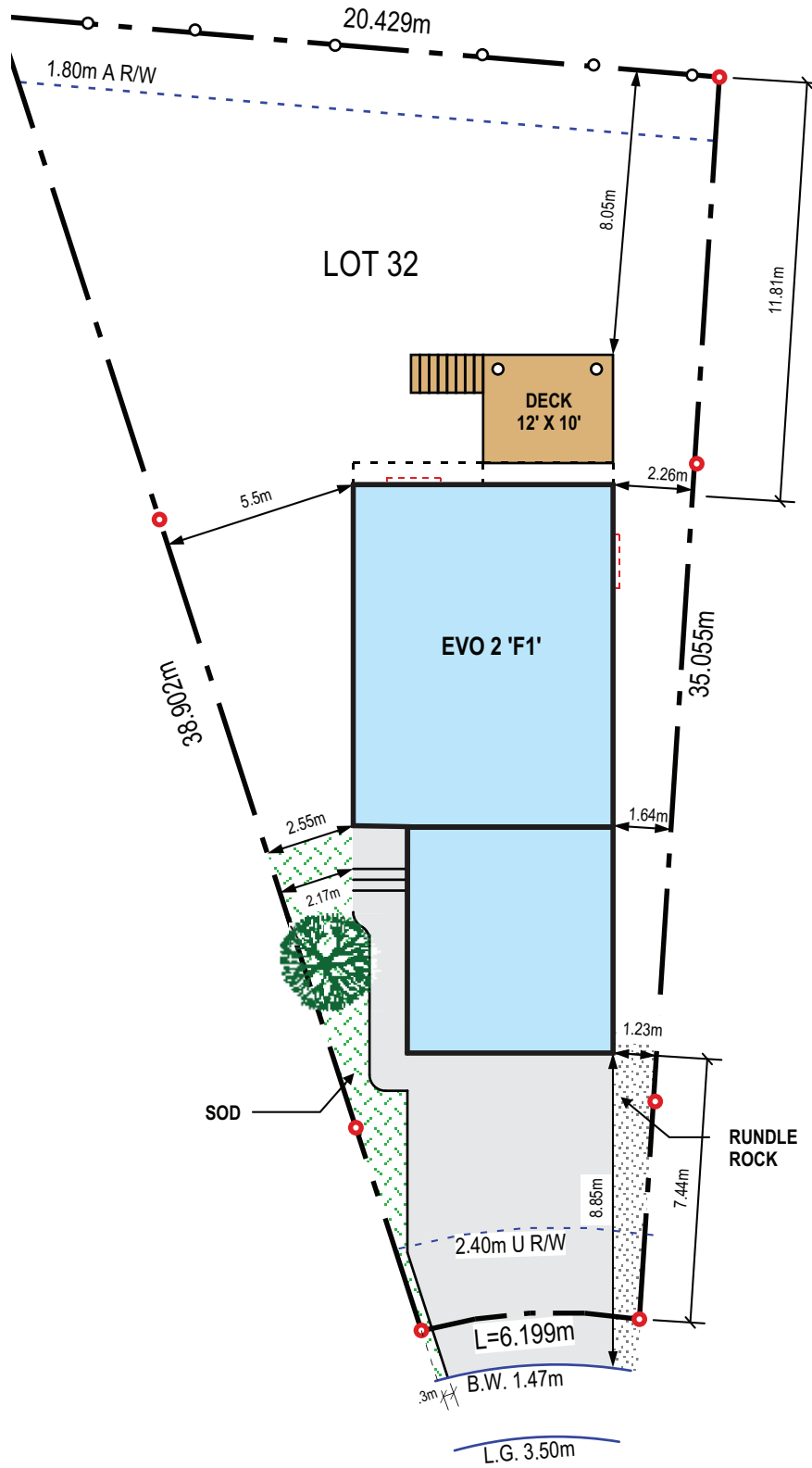
FLOORPLAN

MAIN FLOOR | 780 SQ FT

UPPER FLOOR | 1,039 SQ FT



PLOT CONCEPT



INCLUDED FEATURES

- Top selling Evo 2 model
- Large pie shape lot with south facing backyard
- 9' main floor ceiling
- Walk-Thru Pantry to mudroom
- Centrally located bonus room
- Triple glazed low-E window package
- Luxury Vinyl Plank flooring throughout main floor
- Custom Huntwood brand cabinetry package including:
 - Maple cabinetry with Thunder Stain
 - Soft close hardware
 - Dovetail drawer construction
 - Premium hardware
- Broan Chimney Hoodfan in Kitchen
- Premium level quartz countertops throughout
- Upgraded Moen kitchen faucet
- Premium level kitchen backsplash
- Premium level luxury vinyl plank flooring
- Upgraded railing
- Premium wall tile package
- Moen plumbing faucets and fixtures
- Pot lighting
- Dual ensuite sinks
- Whirlpool front load washer & dryer
- Heat recovery ventilation system
- Cardel's premium spray foam attic insulation assembly
- Rough in gas line to kitchen stove and deck
- 30 year shingles
- Exposed aggregate sidewalk and driveway
- Large deck with aluminum railing