
THE JULIAN



CRAFTSMAN AP3



FARMHOUSE AP2



MODERN FARMHOUSE AP1

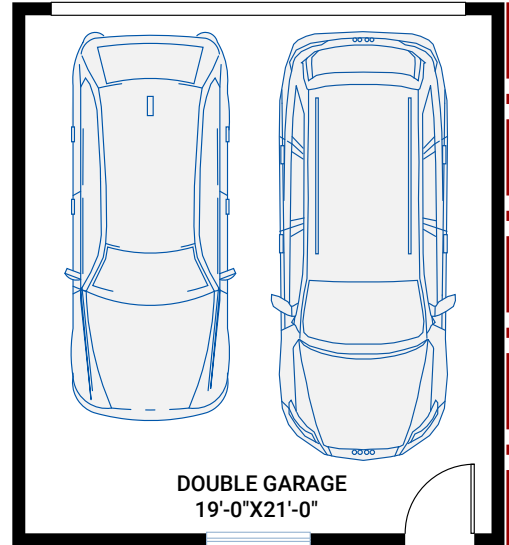
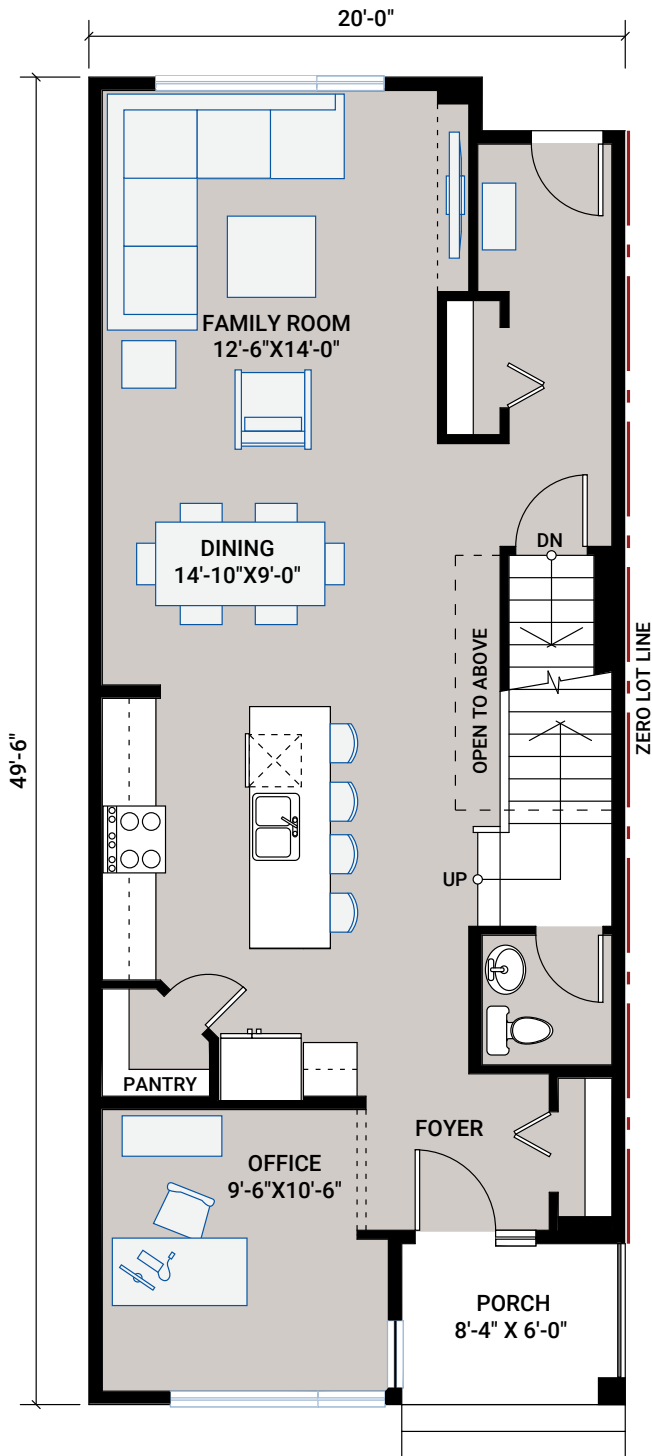
CALGARY

**ALPINE
PARK**

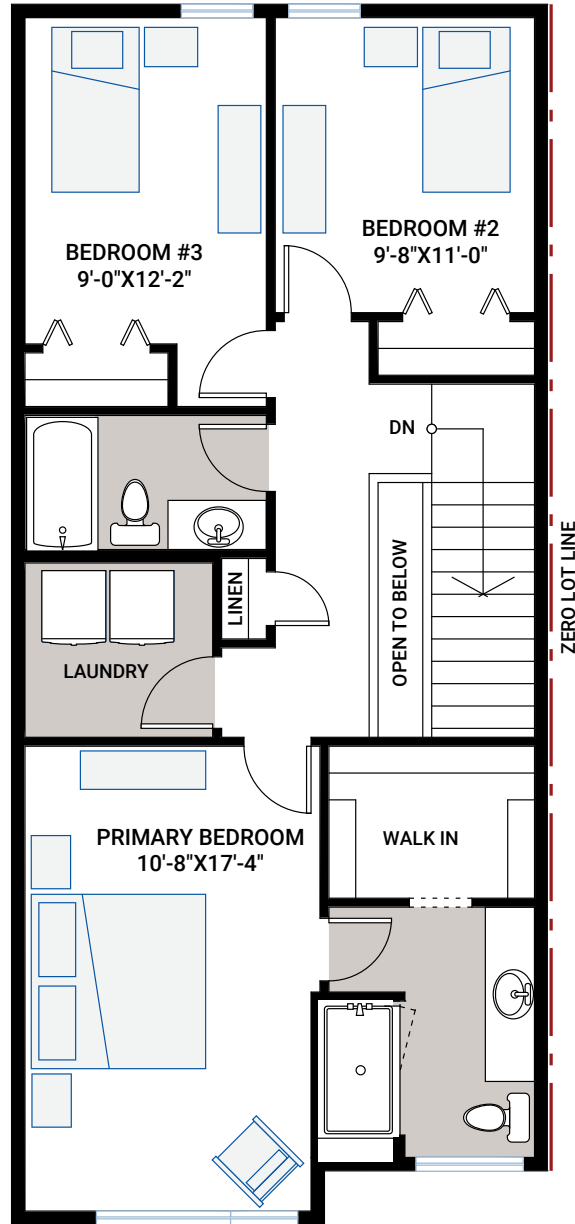
CANADA

1,805 SQ FT
3 BED 2.5 BATH

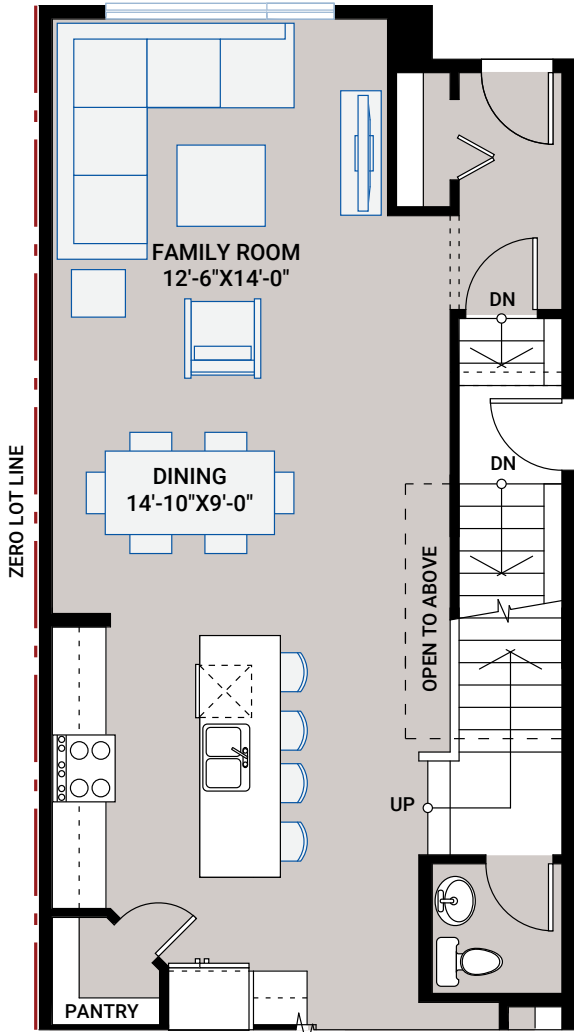
**CARDEL
HOMES**



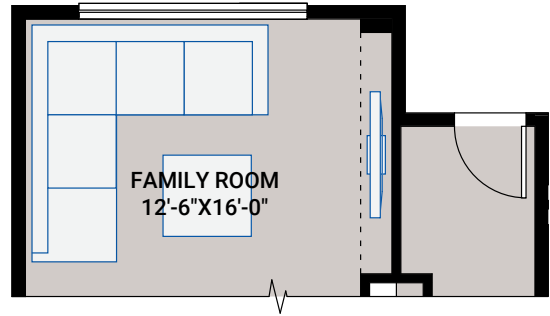
REAR GARAGE
- positioned behind the home



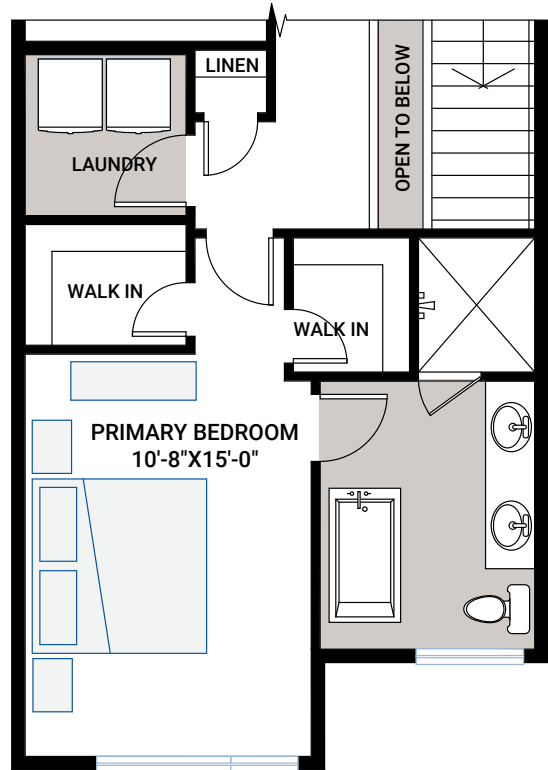
FLOORPLAN OPTIONS



OPTION #05A
 Exterior Side Entry to Basement
 - lot type and grading permitting
 - zero lot line switch to kitchen side wall



OPTION #01A
 Family Room Extension
 - adds 30 sq ft
 - full foundation



OPTION #02A
 Alternate Ensuite
 - adds 23 sq ft