
THE LOGAN



MODERN FARMHOUSE AP3



FARMHOUSE AP2



URBAN MOUNTAIN AP1

CALGARY

**ALPINE
PARK**

CANADA

1,940 SQ FT
3 BED 2.5 BATH

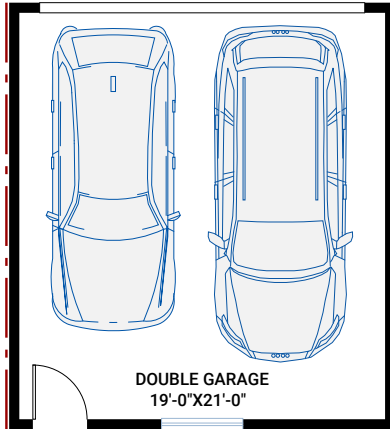
**CARDEL
HOMES**

MAIN FLOOR

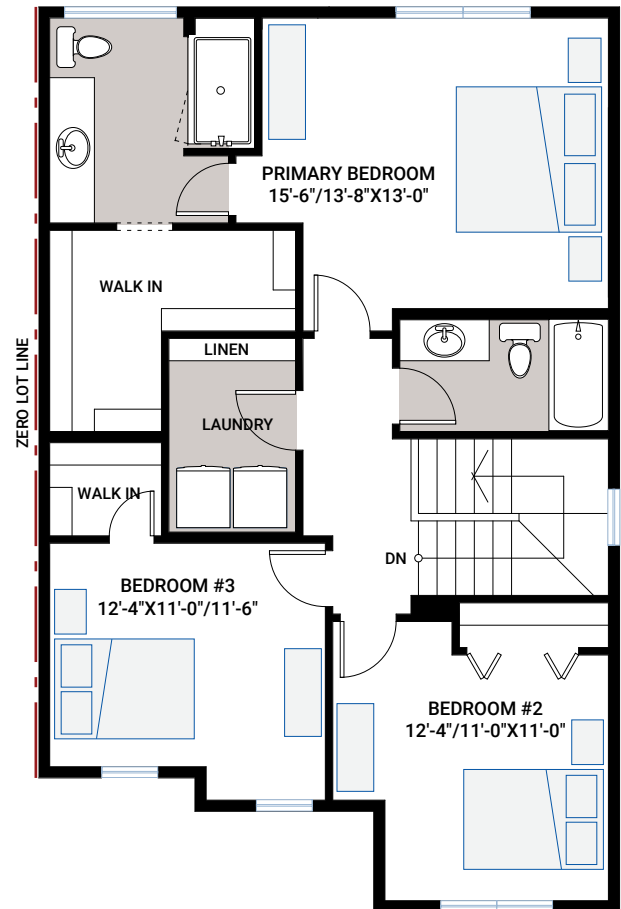
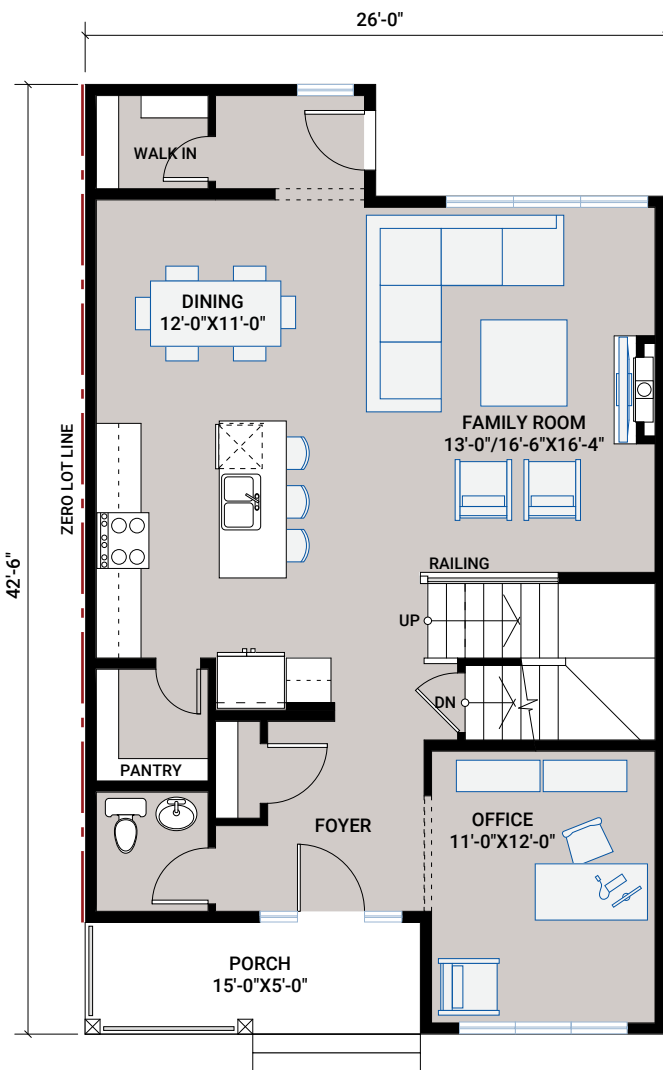
965 SQ FT

UPPER FLOOR

975 SQ FT

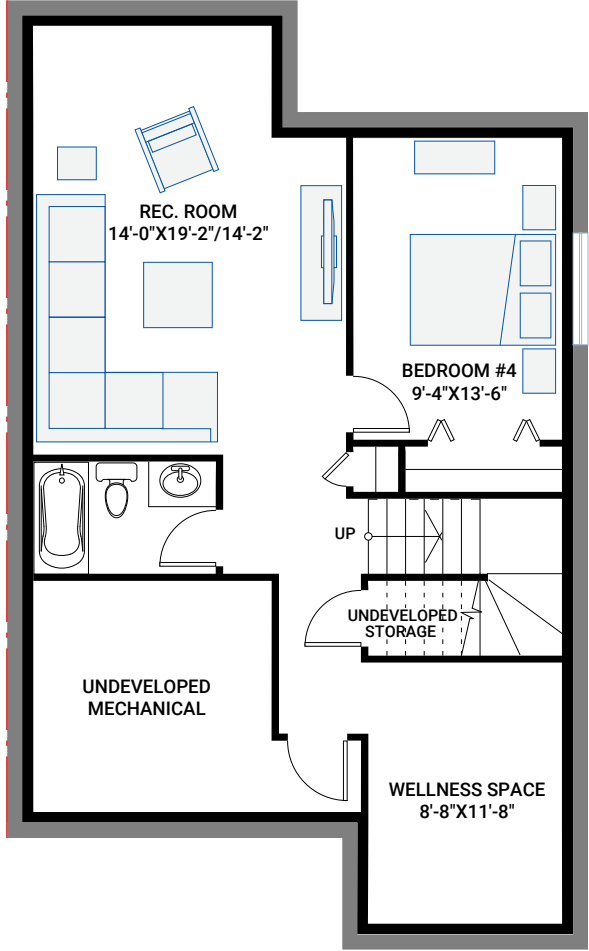


REAR GARAGE
- positioned behind the home

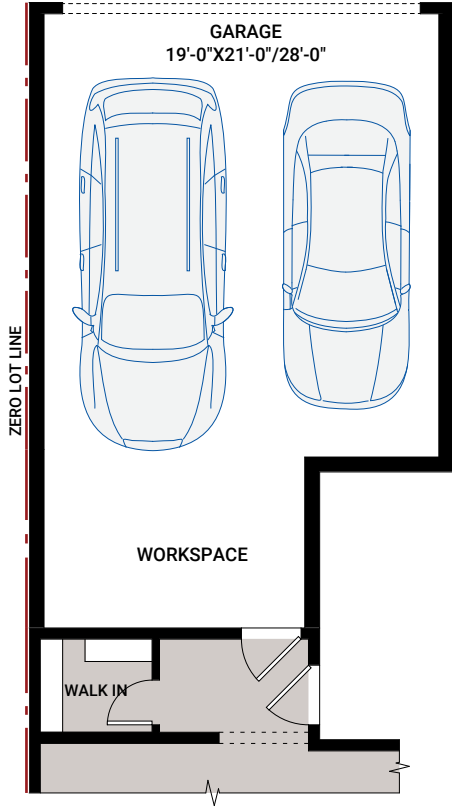


ALPINE PARK

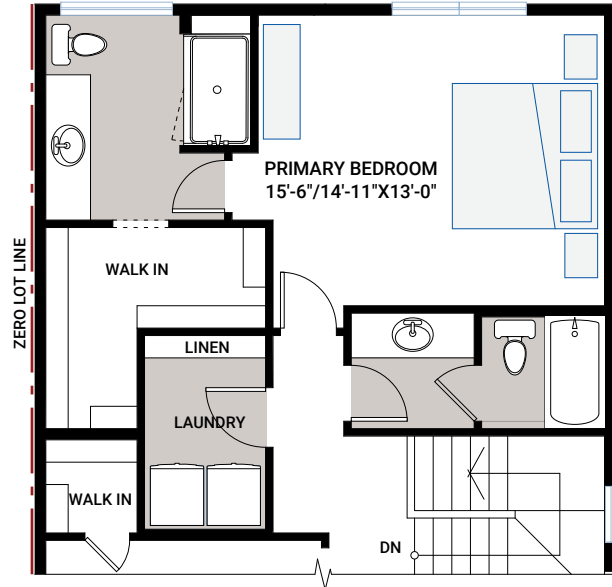
THE LOGAN | 1,940 SQ FT



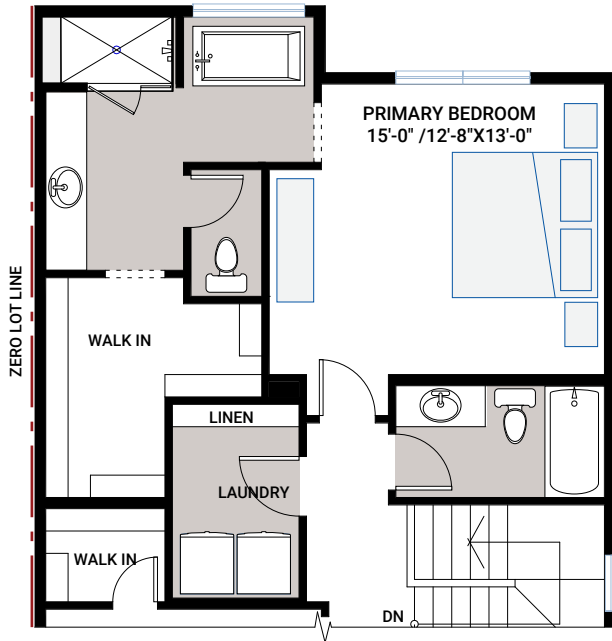
FLOORPLAN OPTIONS



OPTION #05A
Attached Rear Garage



OPTION #02A
Jack & Jill Bathroom
- no additional sq ft



OPTION #02B
Alternate Principal Ensuite
- adds 39 sq ft