
THE LOGAN



MODERN FARMHOUSE AP3



FARMHOUSE AP2

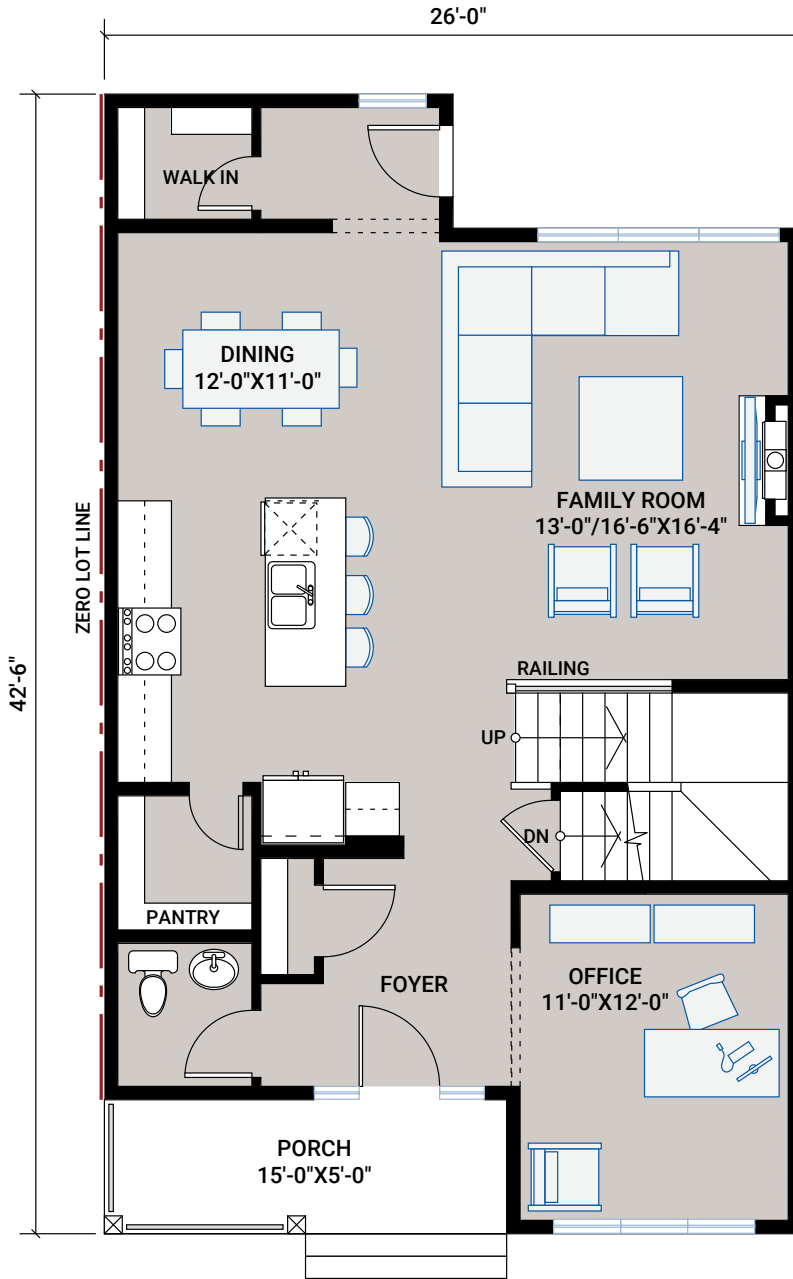
CALGARY

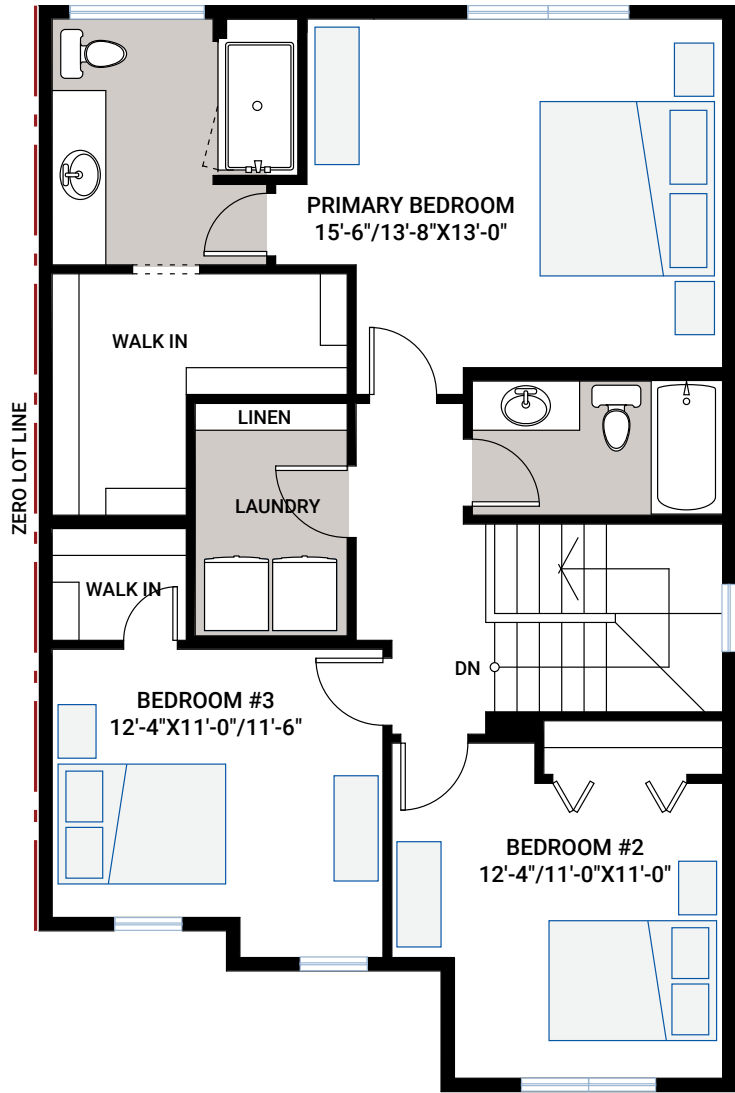
**ALPINE
PARK**

CANADA

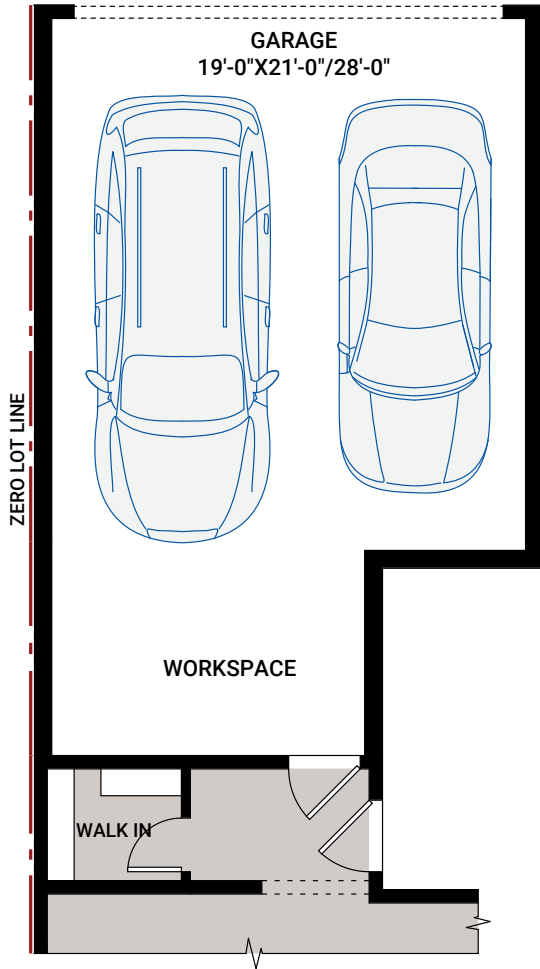
1,940 SQ FT
3 BED 2.5 BATH

**CARDEL
HOMES**

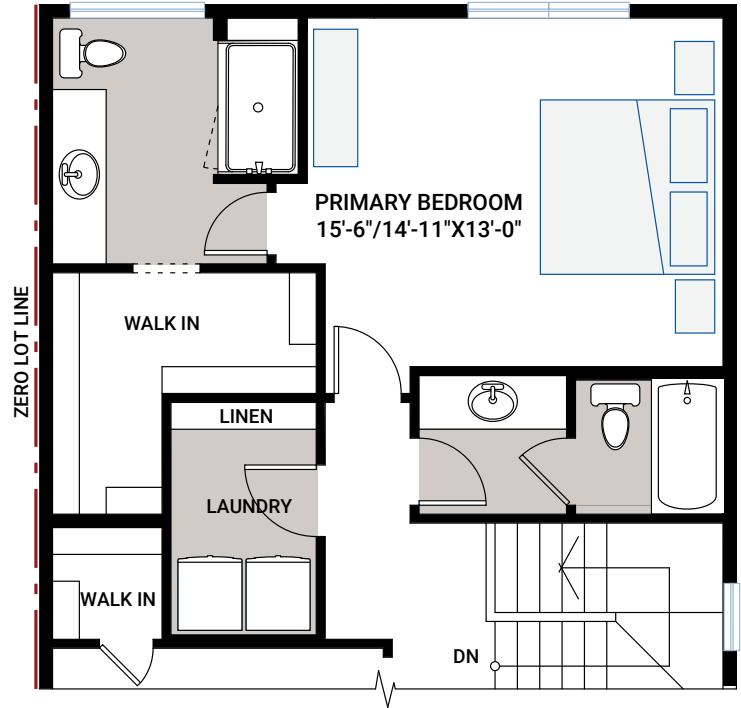




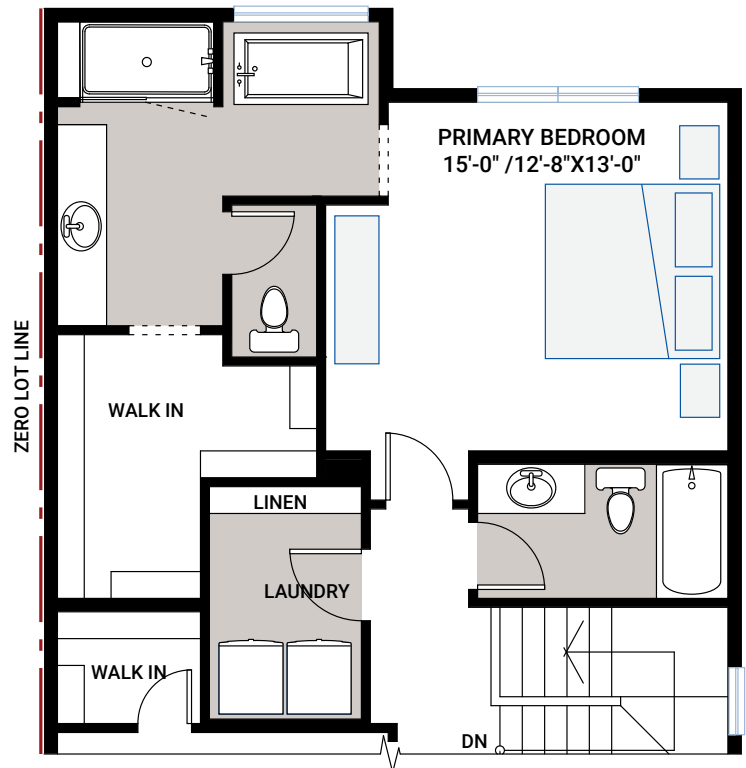
FLOORPLAN OPTIONS



OPTION #05A
Attached Rear Garage



OPTION #02A
Jack & Jill Bathroom
- no additional sq ft



OPTION #02B
Alternate Principal Ensuite
- adds 39 sq ft