

Quick Possession



CANADIANA A1

DURHAM

701 KIRKHAM CRESCENT (LOT 21)

**TWO-STOREY
GREAT ROOM**

**QUARTZ
COUNTERTOPS**

**MAIN FLOOR
DEN**

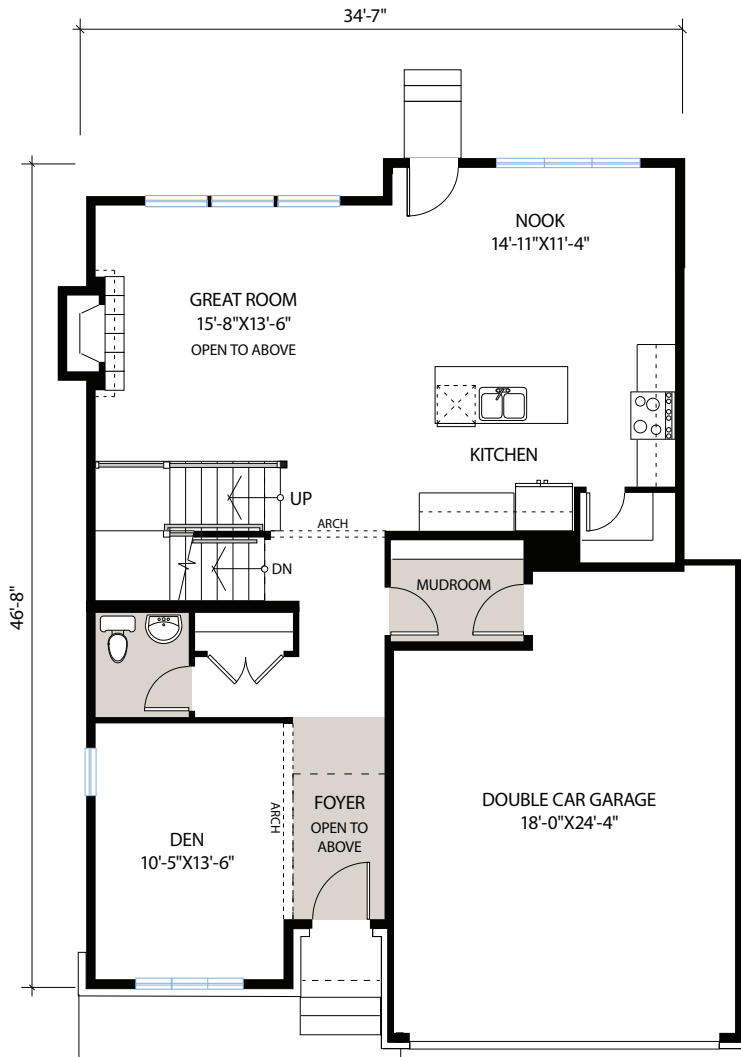
RICHMOND'S
CreekSide

2,314 SQ FT | 4 BED | 2.5 BATH

CARDEL
HOMES

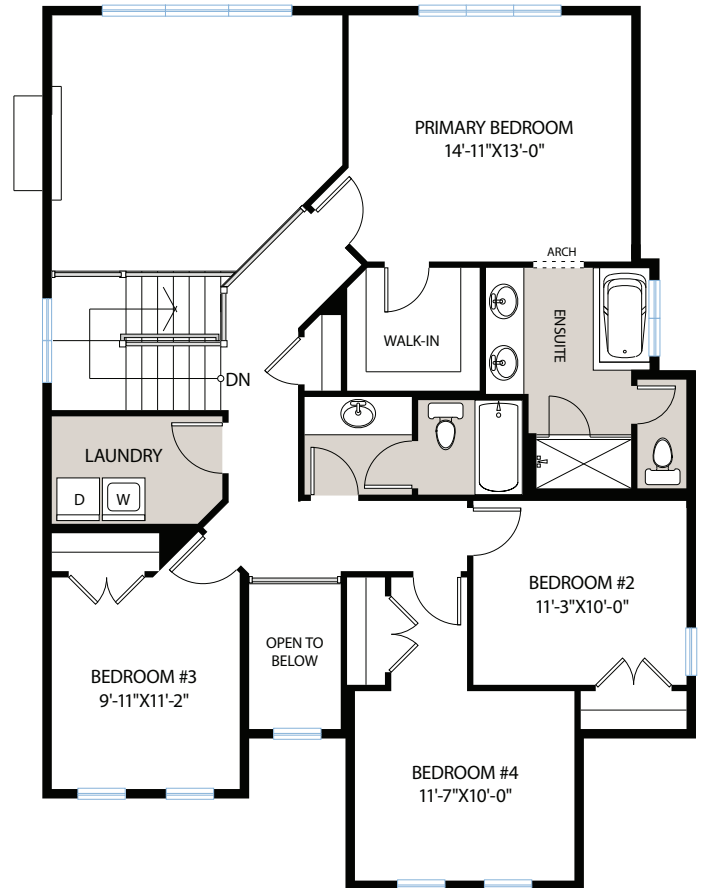
MAIN FLOOR

1,058 SQ FT



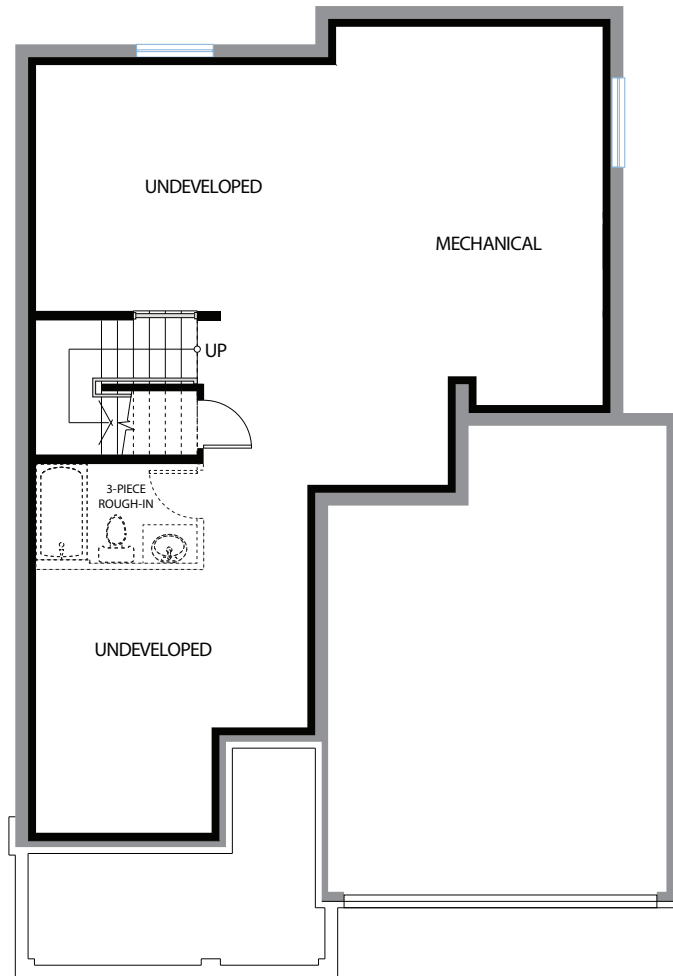
UPPER FLOOR

1,242 SQ FT



FOR MORE INFORMATION CONTACT: **Betsy Leeks** New Home Consultant
Betsy.Leeks@cardelhomes.com | P: 613.836.9521

UNDEVELOPED BASEMENT



- Classic Canadiana elevation with welcoming front porch
- Two-Storey great room with wall of windows
- Large den on main floor
- Beautiful two-storey foyer
- Kitchen includes quartz countertops, chimney-style hoodfan and walk-in pantry
- Master ensuite with 10mm glass shower
- Convenient 2nd floor laundry room
- A/C & humidified included
- Designer selected interiors

INTERIOR COLOUR SCHEME



* All sizes are nominal. The colours represented on this page may vary from the actual product colours. Actual samples can be viewed by appointment.