

Quick Possession



MODERN URBAN A3

THE BRISTOL

1082 BLANDING CRESCENT (LOT 69)
MOVE-IN FALL 2022

\$1,129,935
including HST

2,667 SQ
FT

4 BEDS
2.5 BATHS

**\$5,000 DESIGN
CENTRE CREDIT**

**DOUBLE FRONT
ENTRY DOOR**

**WALK-OUT
LOT**



DALE LAURIE
613.435.5704
DALE.LAURIE@CARDELHOMES.COM

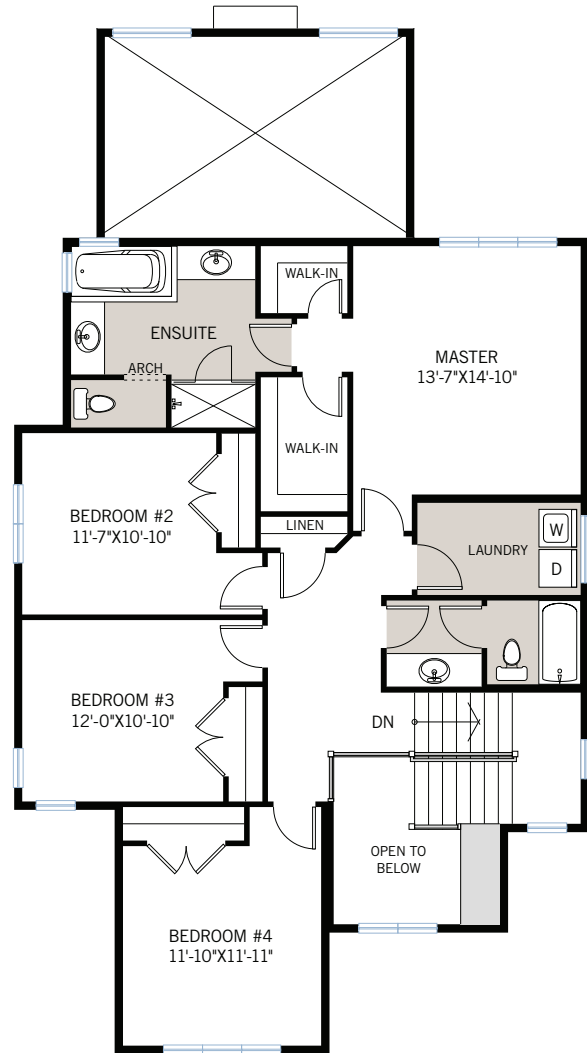
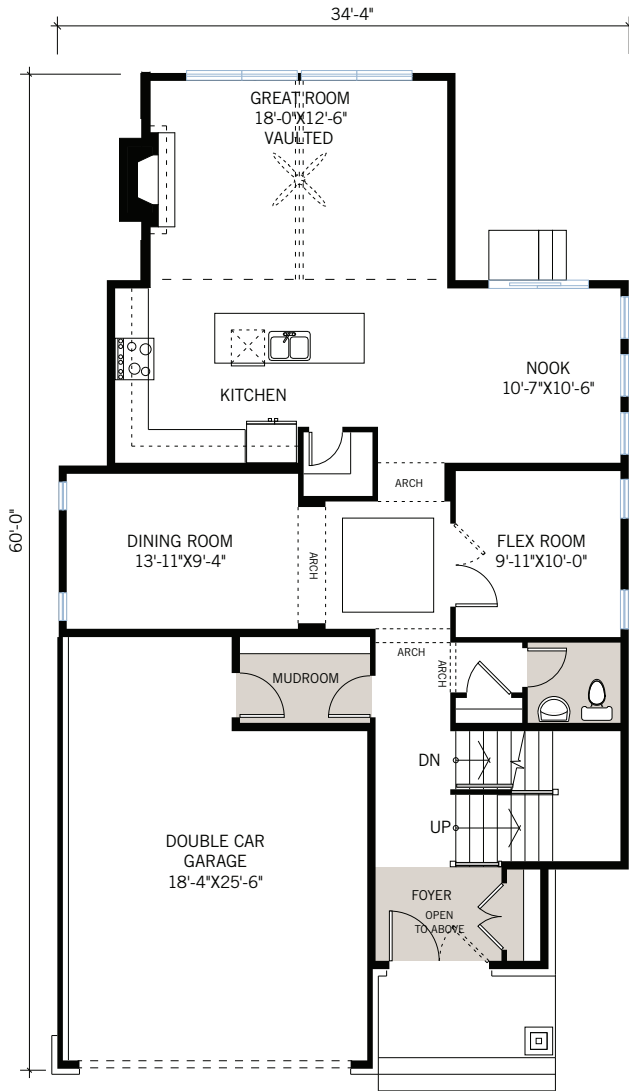
**CARDEL
HOMES**

MAIN FLOOR

1,324 SQ FT

UPPER FLOOR

1,343 SQ FT

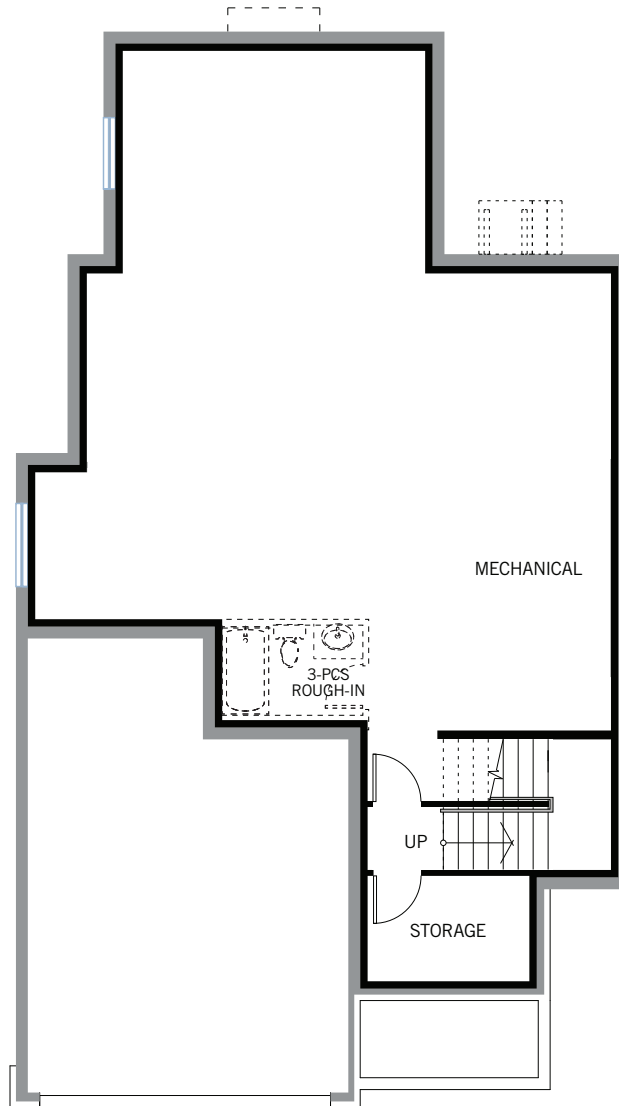


FOR MORE INFORMATION CONTACT: DALE LAURIE New Home Consultant
dale.laurie@cardelhomes.com | P: 613.435.5704

RICHARDSON RIDGE

THE BRISTOL | 2,667 SQ FT

BASEMENT



- Popular Modern elevation
- Walk-out lot
- Double front entry doors
- Main floor flex room
- Separate dining room
- Great room with vaulted ceiling and gas fireplace
- Granite in kitchen
- 10mm glass ensuite shower
- Energy Star ready home

WALK OUT SKETCH

