

 Quick Possession



AMERY

ALPINE PARK
72 TREELINE MANOR SW

1,680 ^{SQ}
_{FT}

**DOUBLE DETACHED
GARAGE**

**MOVE-IN
JUNE 2022**

**FRONT YARD
LANDSCAPING**

CALGARY
**ALPINE
PARK**

CANADA

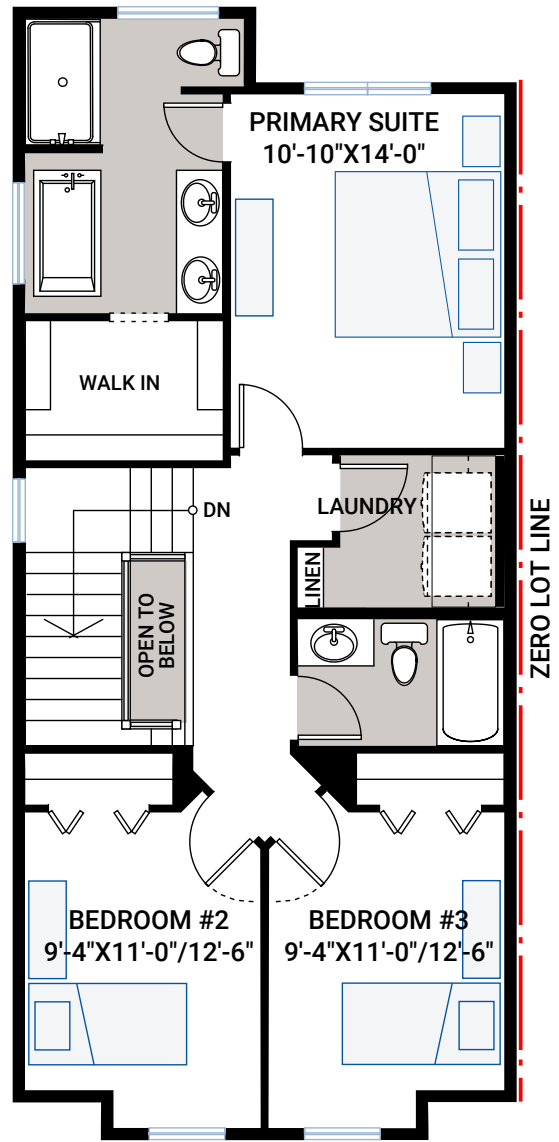
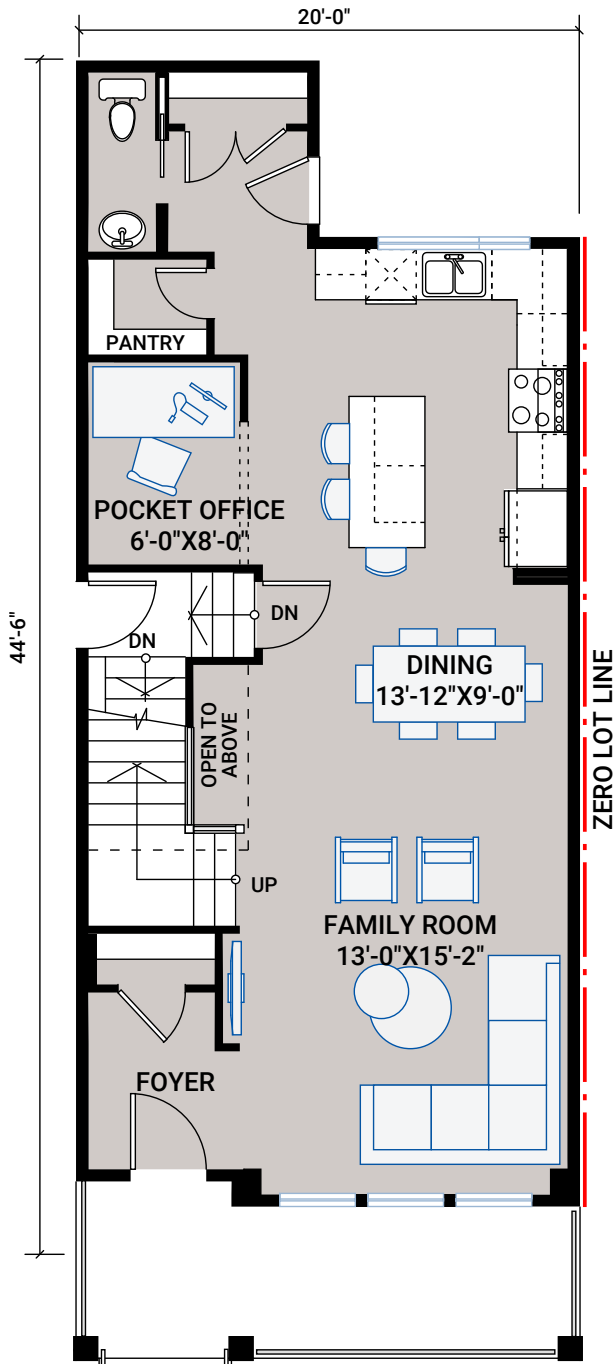
1,680 SQ FT
3 BED 2.5 BATH

**CARDEL
HOMES**

FLOORPLAN

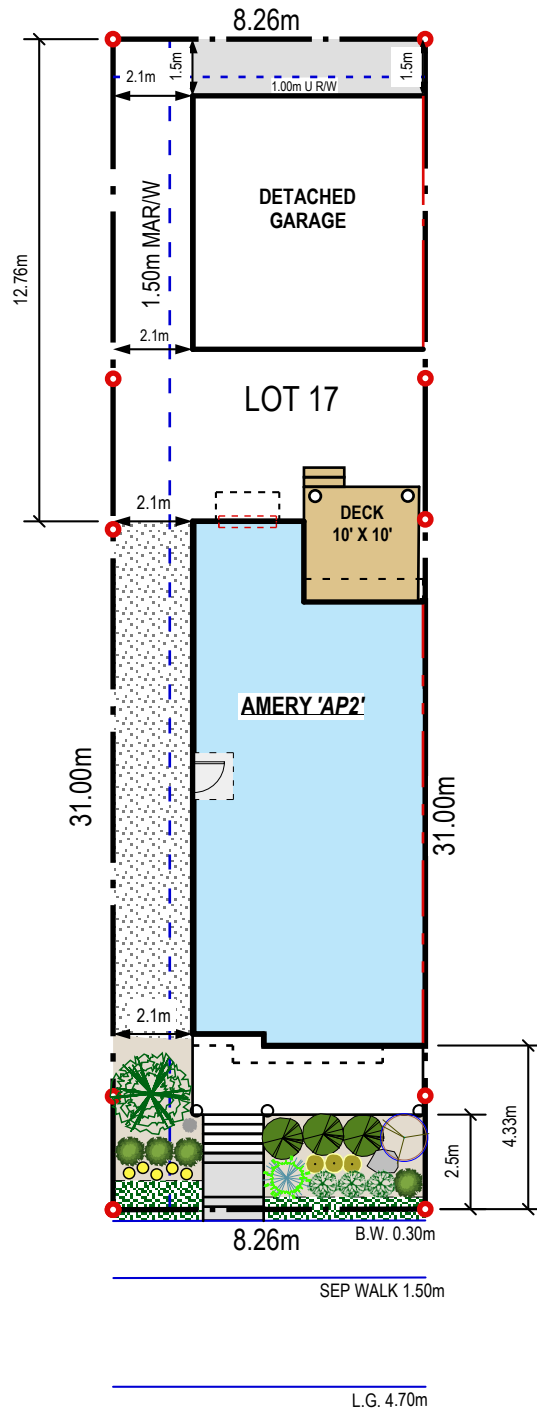
MAIN FLOOR | 832 SQ FT

UPPER FLOOR | 848 SQ FT



PLOT

LANE



TREELINE MANOR SW

INCLUDED FEATURES

- Farmhouse architecture
- 8x10 front porch
- 9' main floor ceiling
- 9' basement ceiling
- Knockdown ceilings throughout
- High performance dual glazed window package in black
- Main floor office
- Custom cabinetry package including:
 - HDF doors and drawers in Cirrus
 - Soft close hardware
 - Dovetail drawer construction
 - Premium hardware
- Premium level Whirlpool appliance package:
 - slide-in range, fridge, dishwasher, built-in microwave
 - Elica chimney hood fan
- Quartz countertops throughout
- Upgraded Moen kitchen faucet
- Upgraded Blanco kitchen sink
- Premium level kitchen backsplash
- Premium level LVP flooring throughout main floor
- Upgraded railing
- Premium wall tile package
- Premium floor tile package
- Dual ensuite sinks
- Large ensuite tiled shower
- Ensuite free standing soaker tub
- Moen plumbing faucets and fixtures
- Washer and dryer – Whirlpool front load
- Upgraded pot lighting
- Heat recovery ventilation system
- Cardel's premium spray foam attic insulation assembly
- Gas line – Rough-In to Deck
- Fully landscaped front yard
- 10x10 rear deck
- Exposed aggregate front sidewalk