

Quick Possession



TRADITIONAL A2

THE BRISTOL

269 KETCHIKAN CRESCENT (LOT 8)
MOVE-IN WINTER 2023

\$1,255,160
including HST

2,667 SQ
FT

**4 BEDS
2.5 BATHS**

**\$5,000 DESIGN
CENTRE CREDIT**

**COVERED
REAR DECK**

**WALK-OUT
LOT**



DALE LAURIE
613.435.5704
DALE.LAURIE@CARDELHOMES.COM

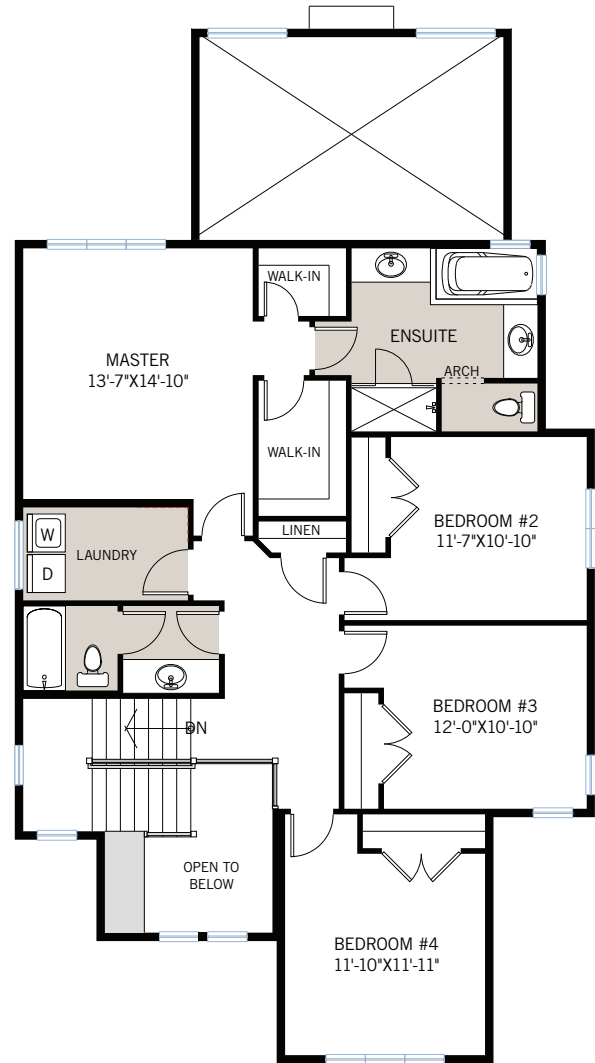
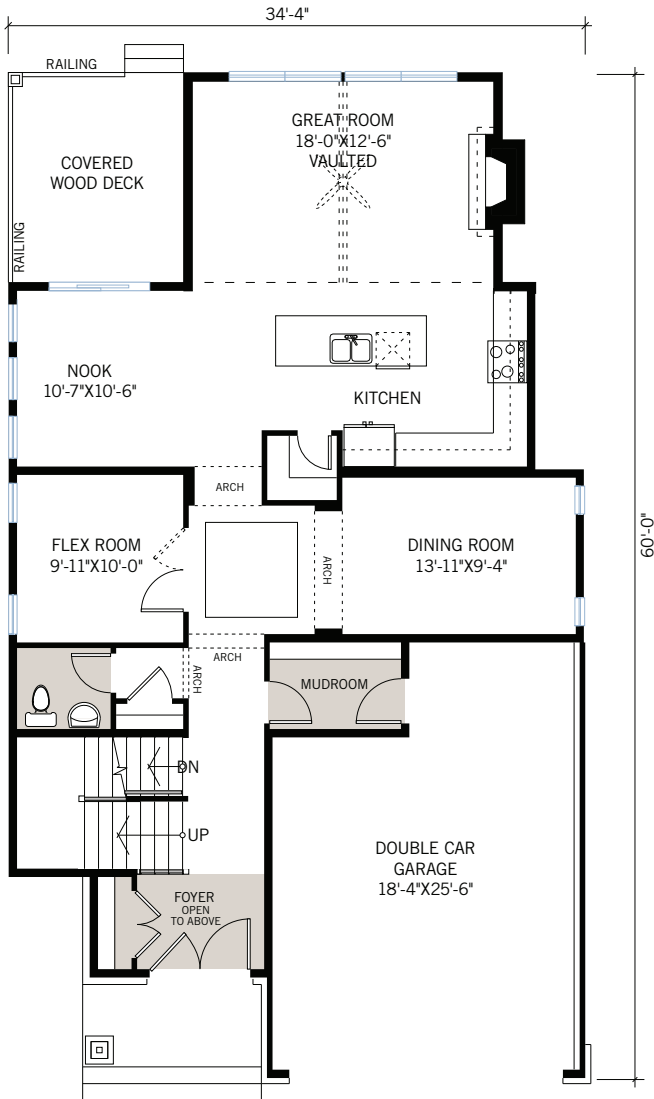
**CARDEL
HOMES**

MAIN FLOOR

1,324 SQ FT

UPPER FLOOR

1,343 SQ FT



- Popular Traditional elevation
- Walkout lot
- Covered rear deck
- Granite in kitchen
- Main floor flex room
- Separate dining room
- Double front entry doors
- Convenient upper floor laundry room
- Great room with vaulted ceiling
- 10mm glass ensuite shower
- Hardwood throughout main floor

FOR MORE INFORMATION CONTACT: DALE LAURIE New Home Consultant
dale.laurie@cardelhomes.com | P: 613.435.5704