

# Quick Possession



CANADIANA A1

THE BRISTOL

271 KETCHIKAN CRESCENT (LOT 7)  
**MOVE-IN WINTER 2023**

**\$1,179,405**

including HST

**2,667** SQ  
FT

**4 BEDS  
2.5 BATHS**

**\$5,000 DESIGN  
CENTRE CREDIT**

**DOUBLE FRONT  
ENTRY DOORS**

**WALK-OUT  
LOT**

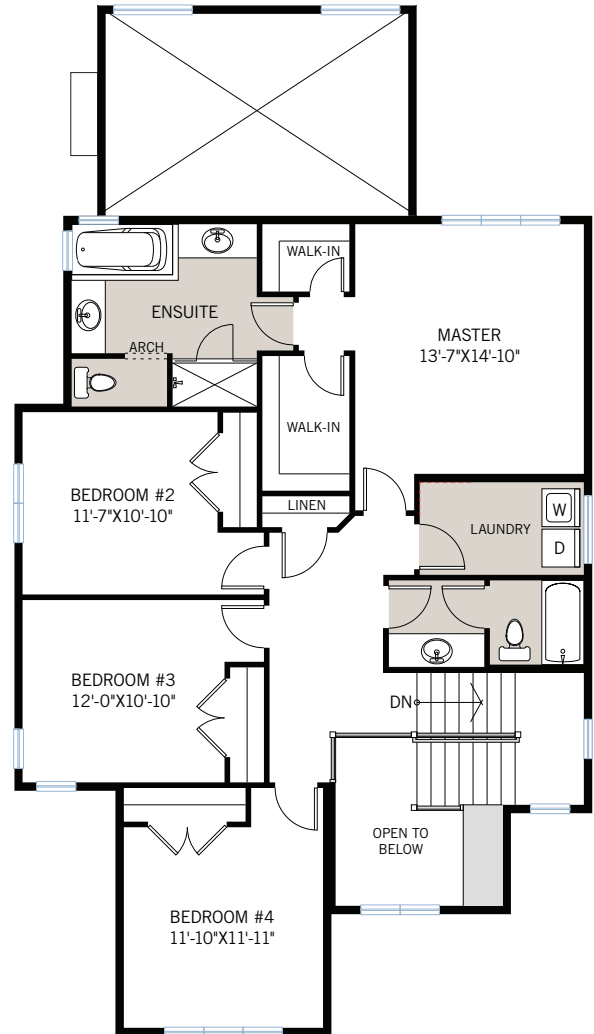
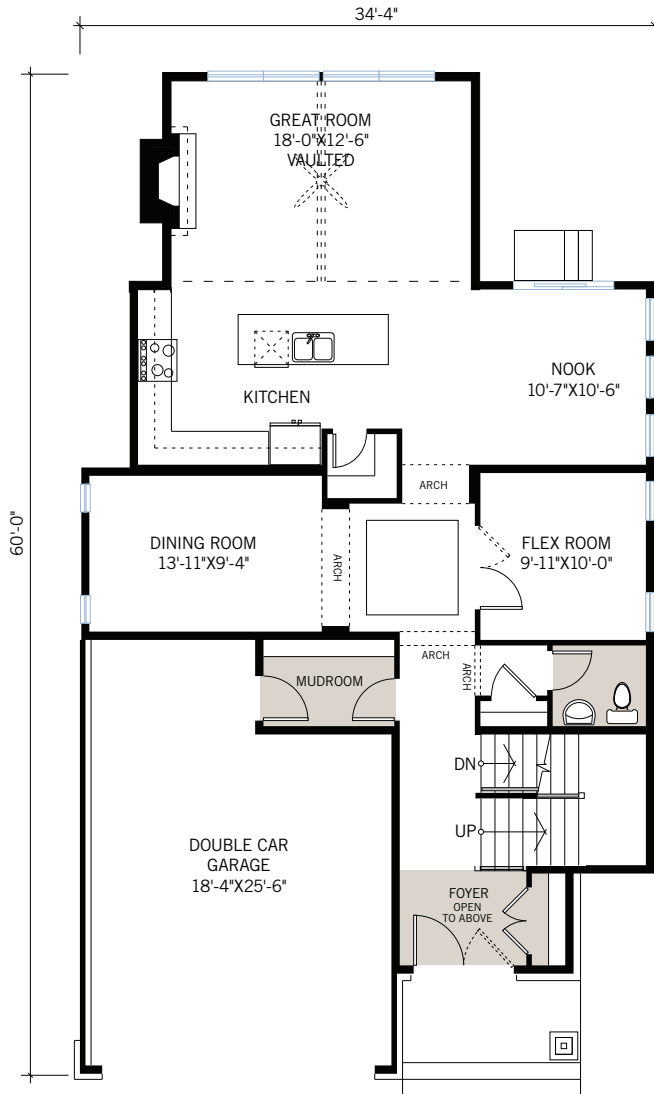


**DALE LAURIE**

613.435.5704

DALE.LAURIE@CARDELHOMES.COM

**CARDEL  
HOMES**

**MAIN FLOOR****1,324 SQ FT****UPPER FLOOR****1,343 SQ FT**

- Popular Canadiana elevation
- Walkout lot
- Granite in kitchen
- Main floor flex room

- Convenient upper floor laundry room
- Great room with vaulted ceiling
- 10mm glass ensuite shower
- Hardwood throughout main floor

**FOR MORE INFORMATION CONTACT: DALE LAURIE** New Home Consultant  
dale.laurie@cardelhomes.com | P: 613.435.5704

CARDELHOMES.COM

January 2022 | BRISTOL. Actual plan may vary from brochure. Square footage is calculated using local Home Builder Association guidelines. This plan is published by Cardel Homes. Dimensions and square footage shown are approximate and subject to change without notice. Mechanical bulkheads may be required and are not shown. Map is an artist's rendition and may be subject to changes. In order to enhance the overall streetscape and account for the topography, we reserve the sole right to determine the position and placement of each home upon its lot/home site. E.&O.E. All rights reserved including the rights of reproduction in whole or part without permission of publisher E.&O.E. Note: Elevation details are community-specific, and rendering is artist concept. Please ask your sales representative for further information.

**CARDEL**  
HOMES