

---

 Quick Possession

---



CUSTOM  
RUNDLE

SHAWNEE PARK  
366 SHAWNEE BLVD SW

---

**2,056** <sup>SQ</sup>  
<sub>FT</sub>

TRIPLE  
DETACHED GARAGE

MAIN FLOOR  
OFFICE

MOVE-IN  
JUN 2022

FULLY  
LANDSCAPED

  
Shawnee  
Park

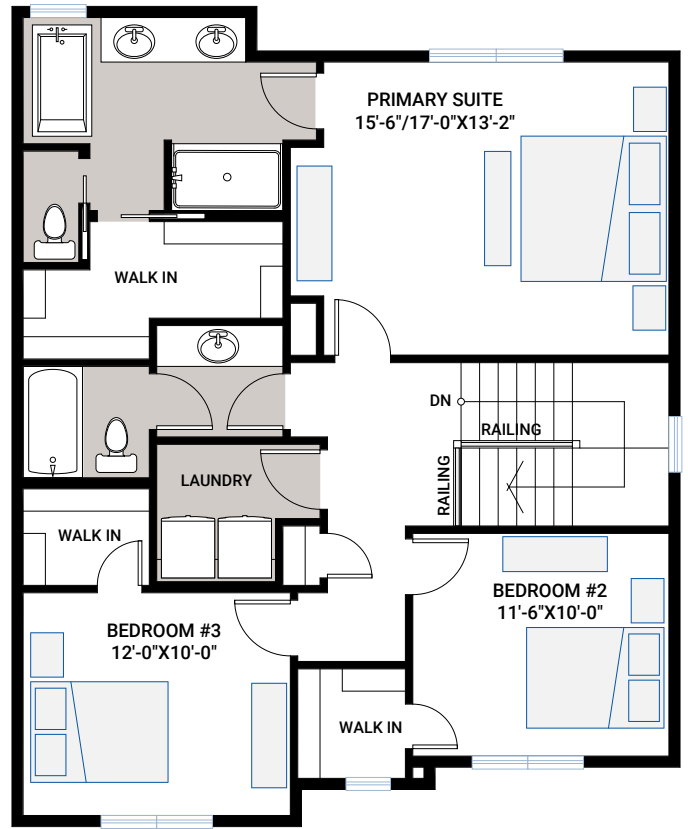
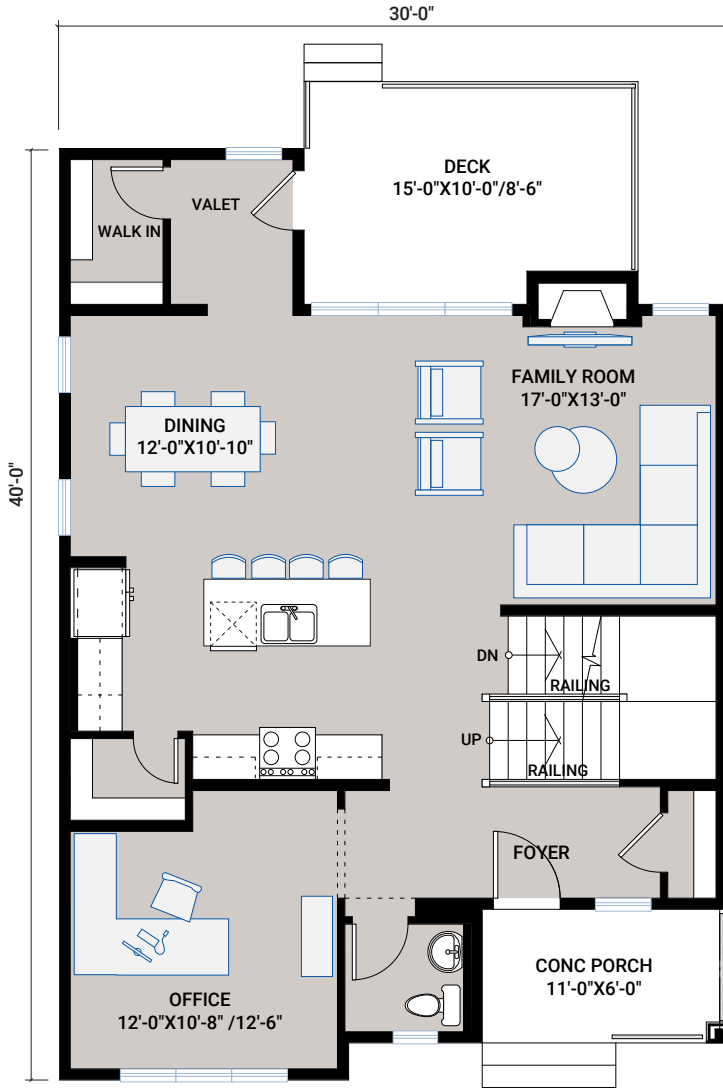
2,056 SQ FT  
3 BED | 2.5 BATH

CARDEL  
HOMES

# FLOORPLAN

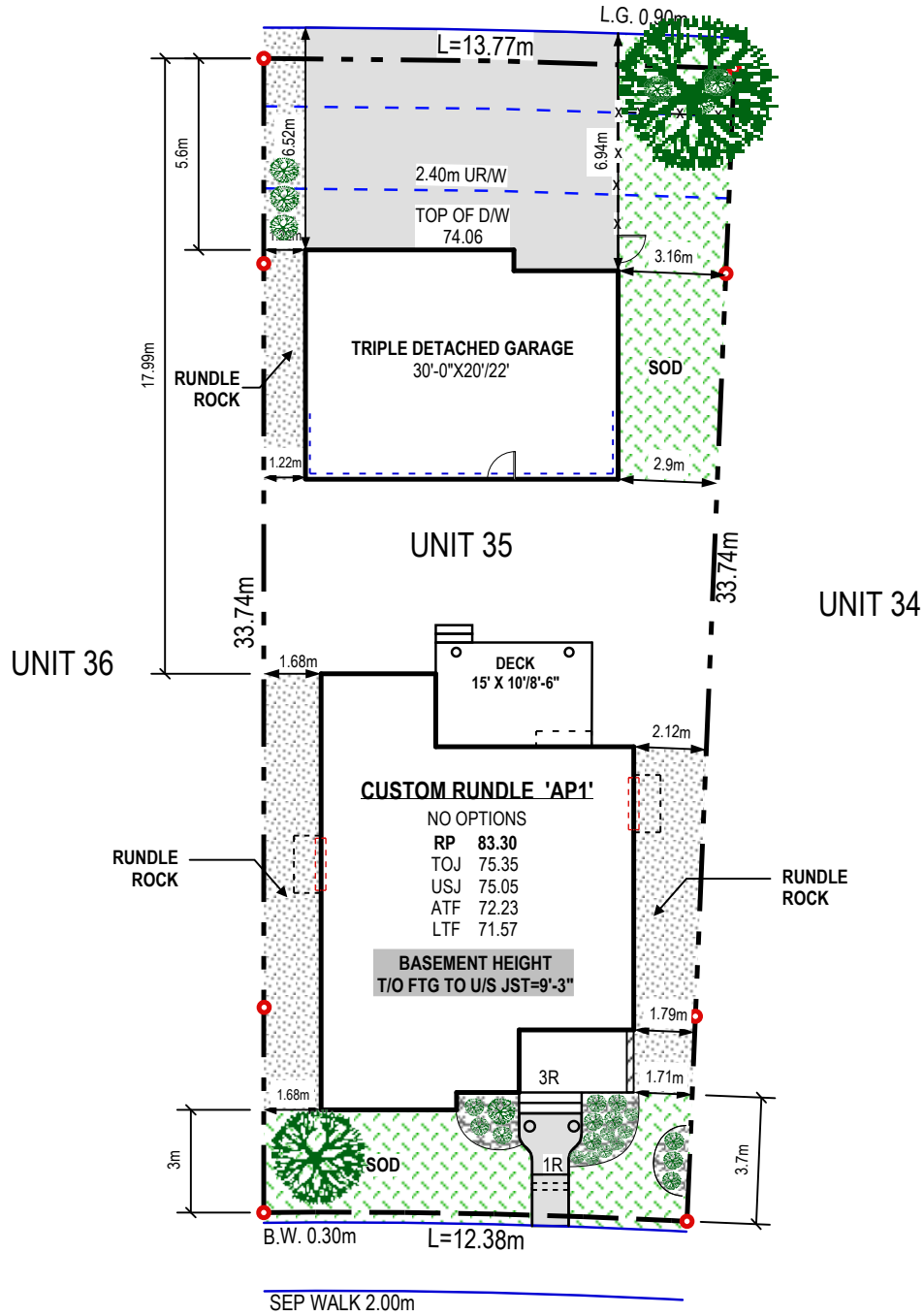
FIRST FLOOR | 1,028 SQ FT

SECOND FLOOR | 1028 SQ FT



# PLOT

## SHAWNEE HEATH SW

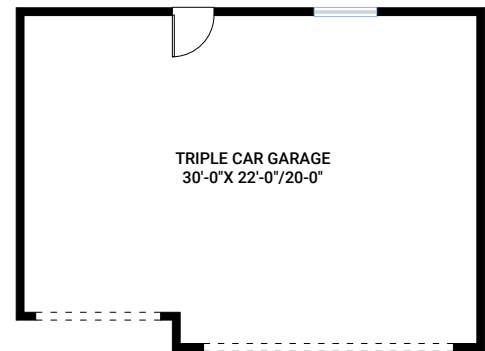


L.G. VARIES

## SHAWNEE BLVD SW

## INCLUDED FEATURES

- Farmhouse architecture with Hardie board siding, board & batten, stone
- Front porch
- Triple rear-detached garage
- Fusion Series, black vinyl exterior, maintenance-free, high-performance Low-E, solar shield, argon-filled dual glazed windows
- Large 15' x 10' rear deck with aluminum railing
- Main floor office with large street-facing windows
- Custom fireplace detail
- 9' main floor ceilings
- 9' basement ceilings
- Large primary suite
- Custom cabinetry package including:
  - HDF Lexington cabinetry in Nordic
  - Soft close hardware
  - Dovetail drawer construction
  - Premium hardware
- Whirlpool stainless steel appliance package:
  - Slide-in gas range
  - French door refrigerator with water and ice
  - Stainless steel dishwasher
  - Built-in microwave
  - Elica chimney stainless hood fan
- Quartz countertops throughout
- Upgraded Delta Trinsic kitchen faucet
- Blanco Silgranit Diamond sink in Cinder
- Premium level kitchen backsplash
- Premium LVP in Chevron pattern throughout main floor
- Premium floor tile package throughout
- Upgraded railing
- 10 ml ensuite shower glass
- Two separate ensuite sinks
- Large, tiled shower
- Upgraded bathroom hardware
- Upgraded Moen Vichy plumbing faucets and fixtures
- Whirlpool front load washer and dryer
- Premium lighting package
- Knockdown ceilings throughout
- Heat recovery ventilation system
- Cardel's premium spray foam attic insulation assembly
- Gas line rough-in to deck
- Fully landscaped yard as per plot plan
- Exposed aggregate concrete driveway and front sidewalk



[CARDELHOMES.COM](https://www.CARDELHOMES.COM)

**For more information contact:**

**Nic Hutchison**, New Home Consultant  
460 Shawnee Boulevard SW | P: 403.256.7902  
E: [nic.hutchison@cardelhomes.com](mailto:nic.hutchison@cardelhomes.com)

**CARDEL**  
HOMES