

---

# Quick Possession

---



CANADIANA A1

**THE PALOMA**

515 EDENWYLDE DRIVE, STITTSVILLE  
AUGUST 2022 OCCUPANCY

**\$1,110,000** including  
HST

**CURRENT  
MODEL HOME**

**UPPER FLOOR  
BONUS ROOM**

**MOVE IN  
AUGUST 2022**

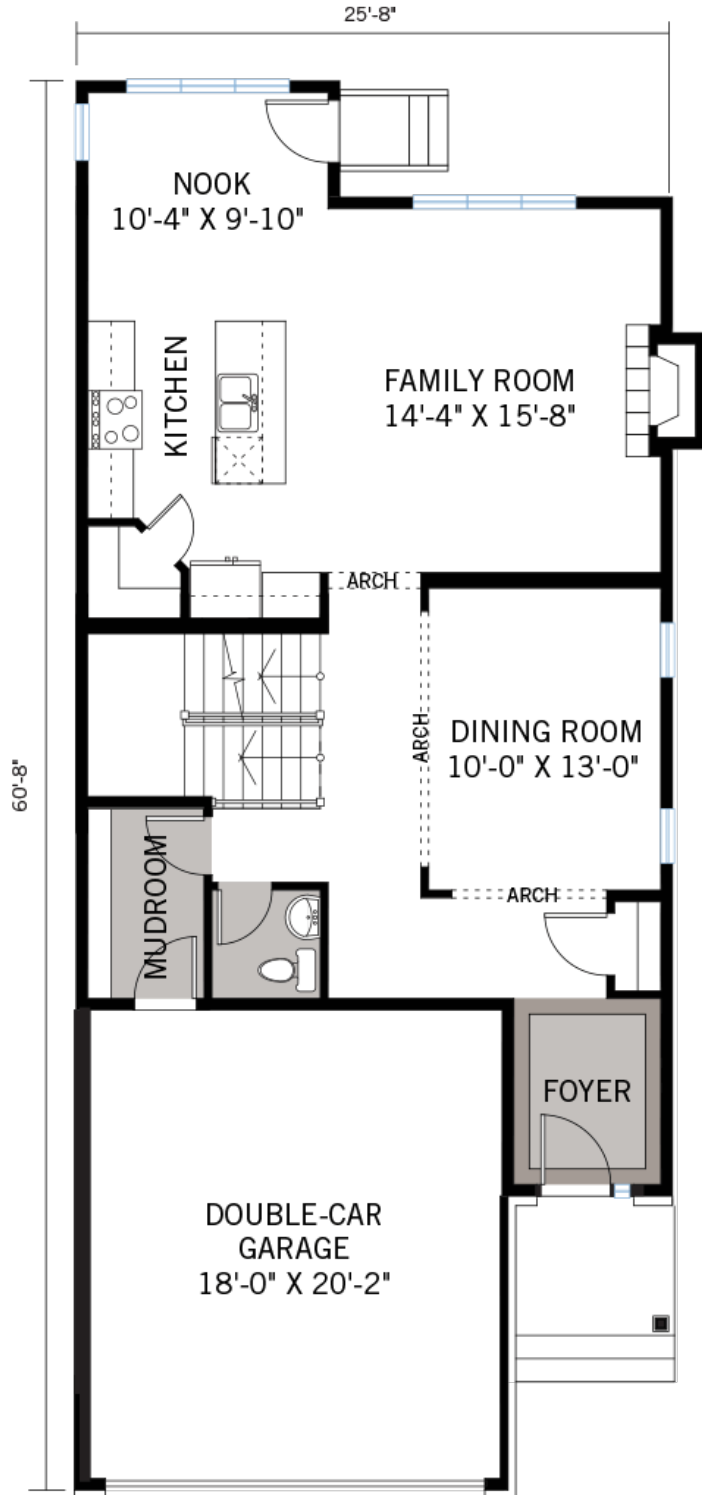
**EdenWylde**

2,273 SQ FT | 3 BED+BONUS | 2.5 BATH

**CARDEL  
HOMES**

# MAIN FLOOR

1,075 SQ FT

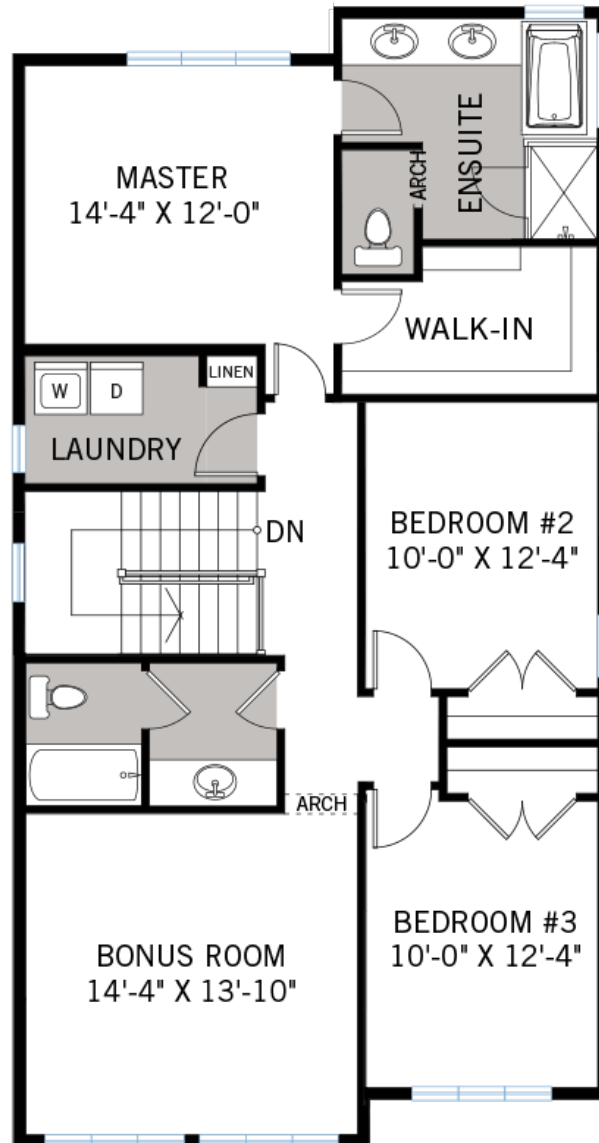


FOR MORE INFORMATION CONTACT: Dale Laurie Community Sales Consultant  
dale.laurie@cardelhomes.com | P: 613.435.5704 | 513 EdenWylde Drive, Stittsville

---

## UPPER FLOOR

1,198 SQ FT



- Canadiana elevation
- Stunning master bathroom with walk-in shower and 10mm frameless glass
- Cardel's signature large windows for extensive natural light
- Gorgeous kitchen with island and pot lights
- Beautiful hardwood and tile throughout the main floor
- Convenient upper floor laundry
- 6 appliances included

# INTERIOR PHOTOS

