
🕒 Quick Move-In



ELEVATION B1
(w/ double garage)

THE WILLOW

995 ACOUSTIC WAY (LOT 94)

**END
UNIT**

**QUARTZ
COUNTERTOPS**

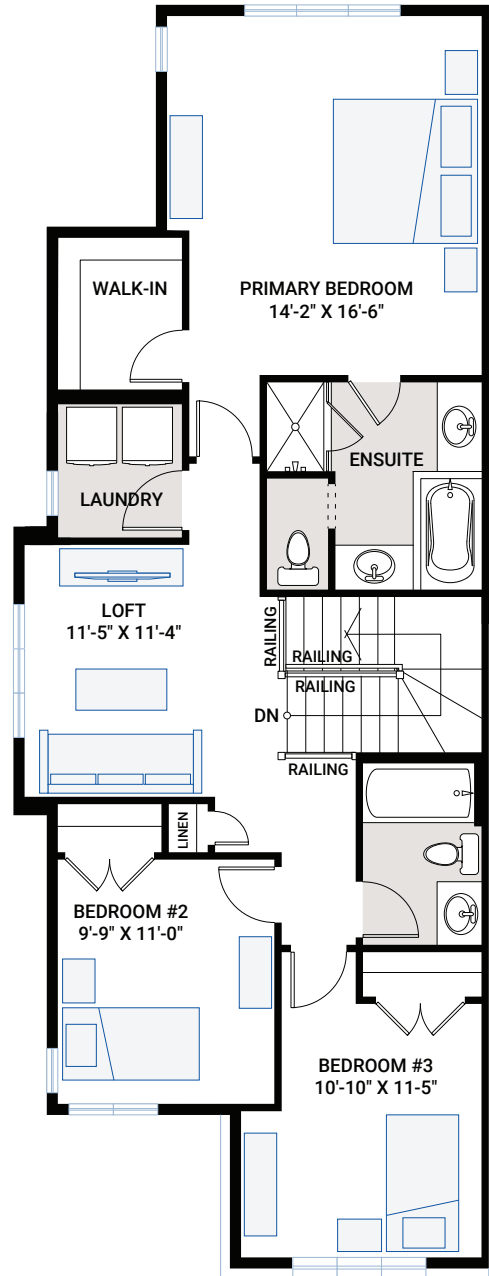
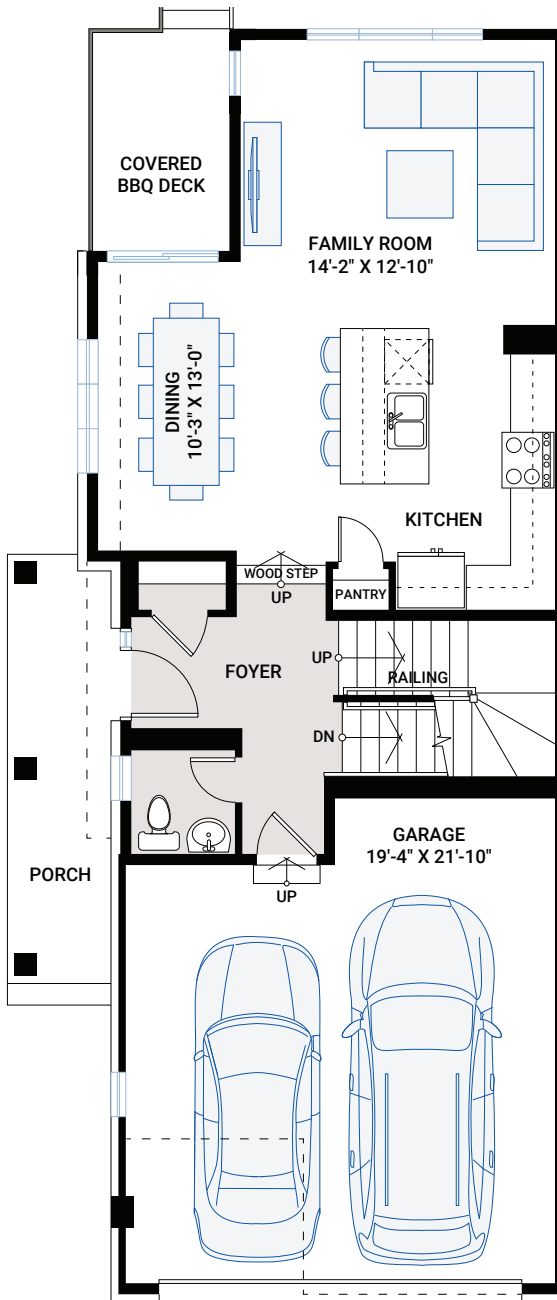
**DOUBLE
CAR GARAGE**

MAIN FLOOR

703 SQ FT

UPPER FLOOR

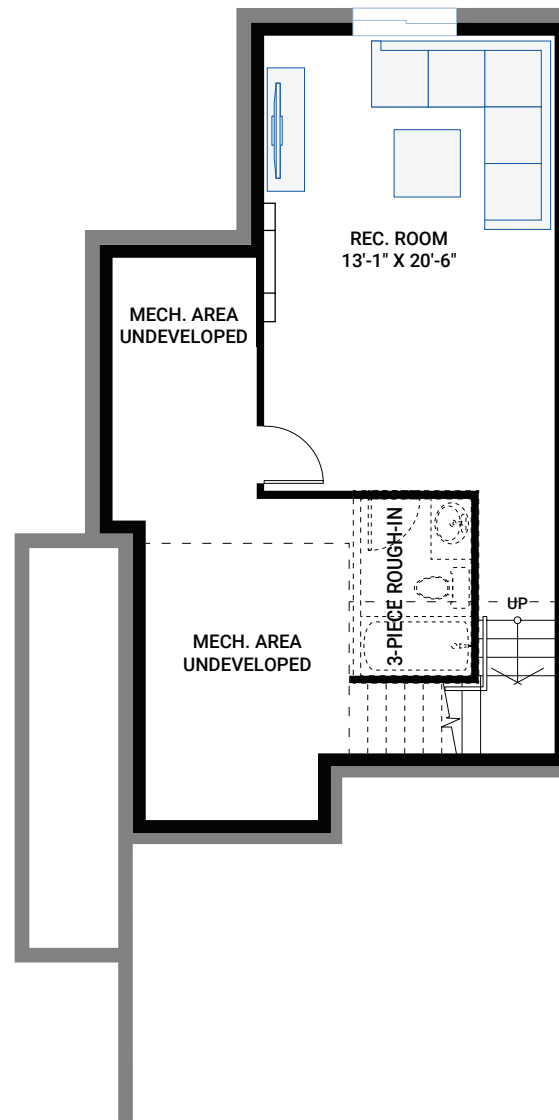
1,051 SQ FT



FOR MORE INFORMATION CONTACT VIVIEN TARNAI New Home Consultant
P: 343.999.2556 | Vivien.Tarnai@cardelhomes.com

DEVELOPED BASEMENT

344 SQ FT



- Exclusive double-car garage
- Oversized lot
- End unit
- 3 Stainless steel kitchen appliances with gas line and upgraded gas stove
- Bright, open-concept floorplan with extra end units windows for lots of natural light
- Quartz countertops throughout
- Potlights in kitchen and family room
- A/C and humidifier included
- Finished basement rec room with electric fireplace
- Covered BBQ deck for entertaining
- Designer selected interiors

INTERIOR COLOUR SCHEME – D



* All sizes are nominal. The colours represented on this page may vary from the actual product colours. Actual samples can be viewed by appointment.