

---

# 🕒 Quick Possession

---



ELEVATION B

---

**THE ALDER**

317 COSANTI DRIVE (UNIT 1462)

---

**QUARTZ KITCHEN  
COUNTERTOPS**

**UPPER FLOOR LOFT**

**FINISHED BASEMENT  
REC ROOM**

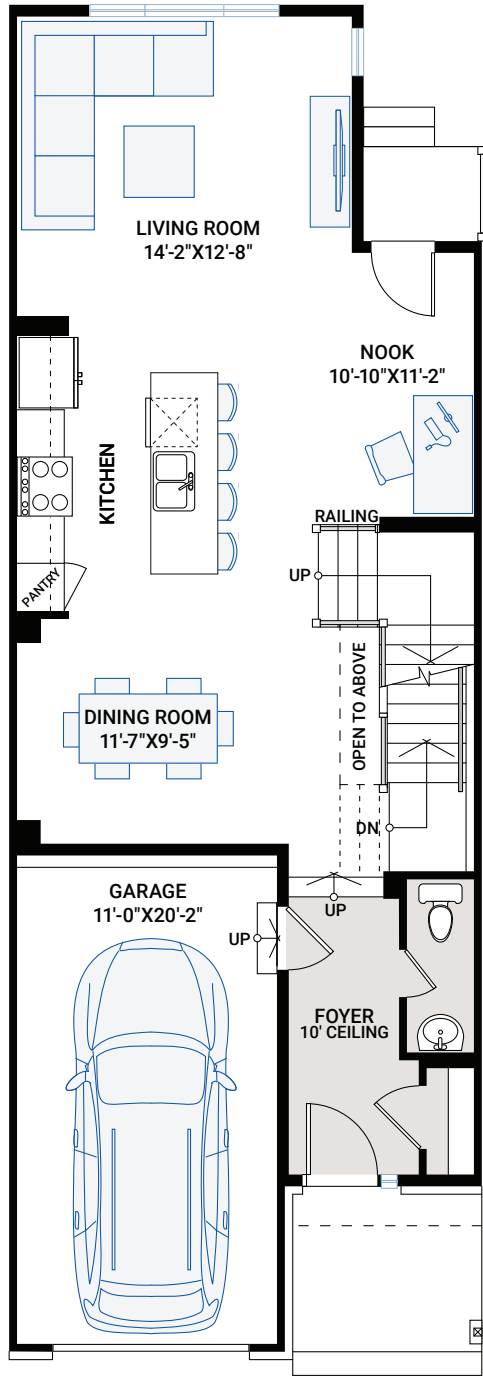
**EdenWylde**

2,237 SQ FT | 3 BED+LOFT | 2.5 BATH

**CARDEL  
HOMES**

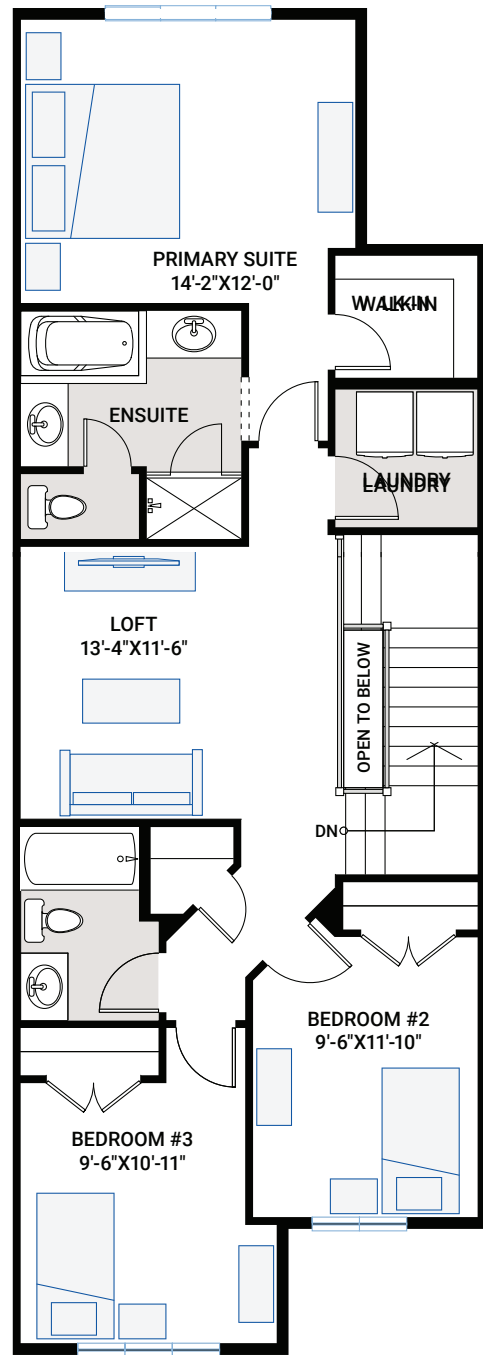
# MAIN FLOOR

803 SQ FT



# UPPER FLOOR

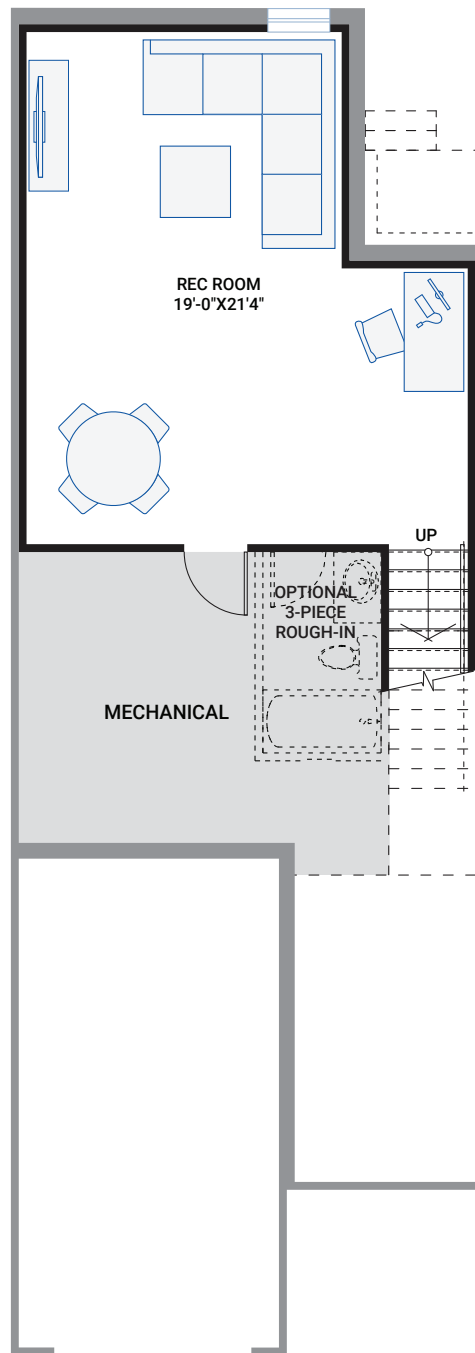
1,034 SQ FT



FOR MORE INFORMATION CONTACT: TAMMY CONDRAN Community Sales Consultant  
tammy.condran@cardelhomes.com | P: 613.435.5704 | 511 EdenWylde Drive, Stittsville

# BASEMENT

409 SQ FT



- Hardwood throughout main floor
- 3 stainless steel kitchen appliances
- Potlights in kitchen
- Upper floor laundry
- A/C and humidifier included
- Finished basement rec room
- Design selections complete

# INTERIOR COLOUR SCHEME – A



\* All sizes are nominal. The colours represented on this page may vary from the actual product colours. Actual samples can be viewed by appointment.