
🕒 Quick Move-In



MODERN A3

THE CHELSEA

1195 BRONZE AVENUE (LOT 89)

UPPER FLOOR
BONUS ROOM

MAIN FLOOR
OFFICE

EXTENDED
FAMILY ROOM

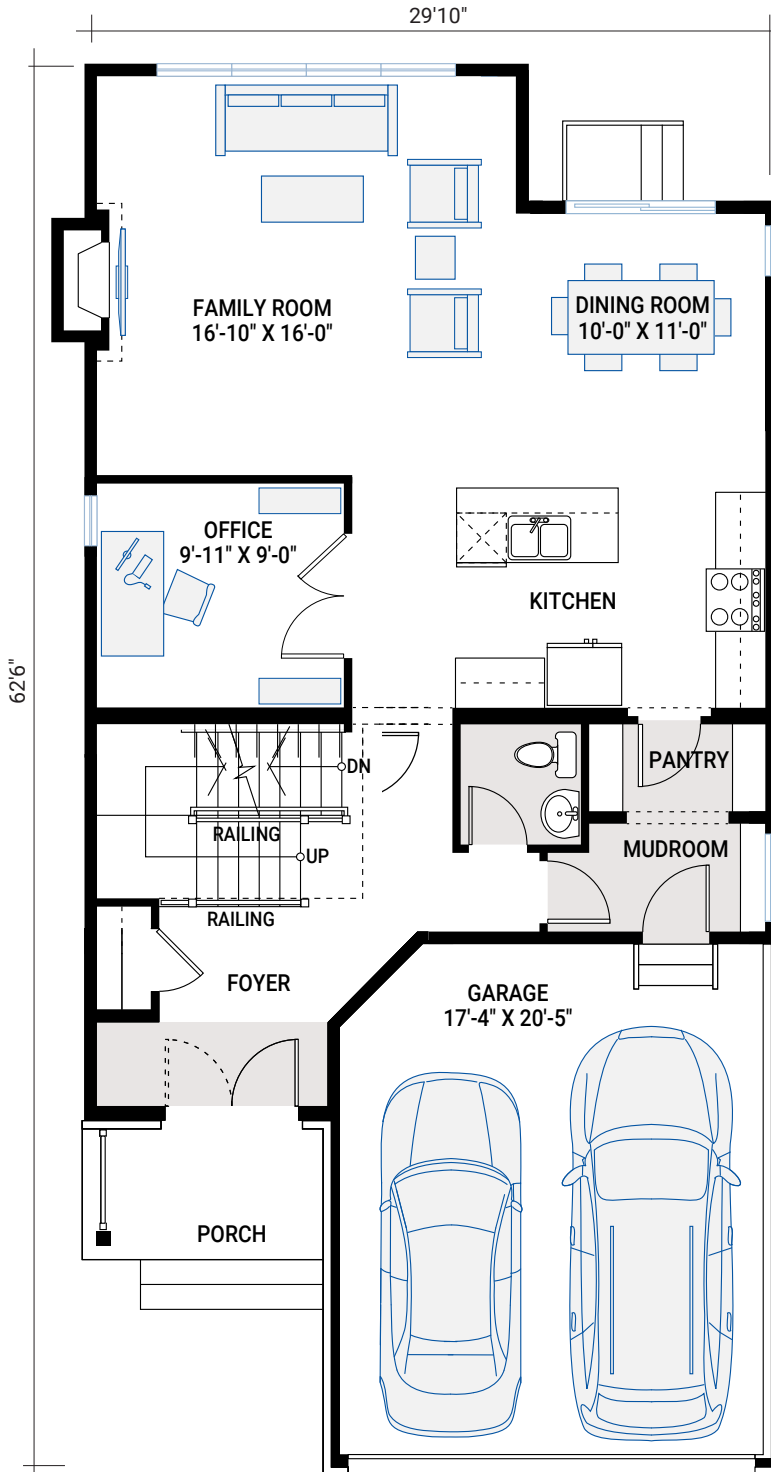


2,260 SQ FT | 3 BED+BONUS | 2.5 BATH

CARDEL
HOMES

MAIN FLOOR

1,073 SQ FT



FOR MORE INFORMATION CONTACT

P: 343.573.2464

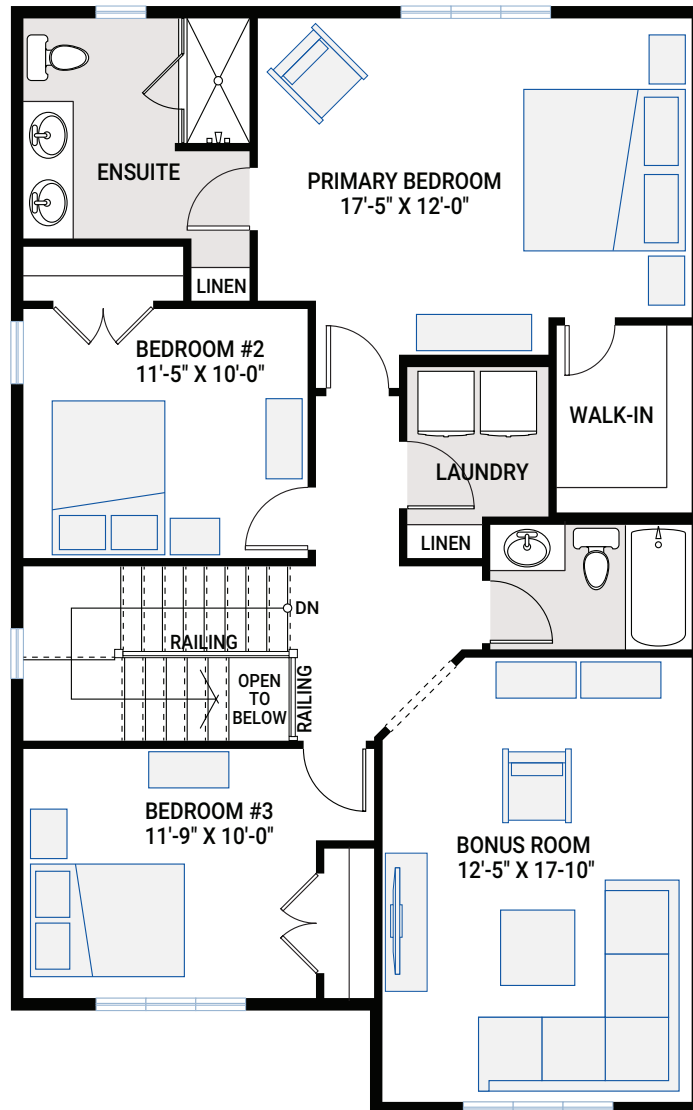


2,260 SQ FT | 3 BED+BONUS | 2.5 BATH

CARDEL
HOMES

UPPER FLOOR

1,187 SQ FT



- Modern elevation with hardie board, brick and siding
- Open floorplan boasting lots of windows for natural light
- Extended family room with side fireplace featuring upgraded surround
- Convenient main floor office with window
- On trend white shaker cabinets throughout with subway tile backsplash and quartz kitchen countertops
- Upgraded 5" oak hardwood flooring throughout main floor and premium 12"x24" floor tile in wet areas
- Kitchen includes brushed nickel hardware, pots and pans drawers, chimney-style hood fan and Moen faucet with stainless steel sink
- Large primary ensuite with tiled shower, 10mil glass, and two sinks
- Second floor bonus room
- Developed basement stairs
- Triple-glazed windows throughout
- South facing backyard

INTERIOR COLOUR SCHEME – 4



* All sizes are nominal. The colours represented on this page may vary from the actual product colours. Actual samples can be viewed by appointment.